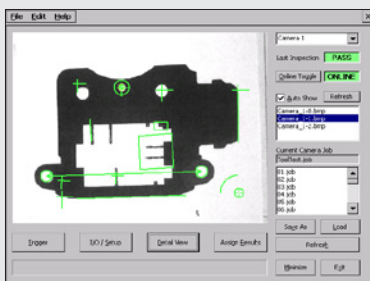




FS100 CONTROLLER



MOTOSIGHT 2D COMPATIBLE



OPTIONAL IP54 ENCLOSURE

TOP REASONS TO BUY

- Uses the same FS100 controller as larger Motoman robots (up to 20 kg)
- Easy vision integration with MotoSight 2D, a Cognex In-Sight based vision system
- Yields extraordinary production results, while requiring minimal capital investment
- High work envelope to mounting surface ratio
- Flexible asset; easily re-deployable as production needs change



MYS650LF

MYS-series 4-axis SCARA robots are ideal for high-speed handling and assembly systems. Several models are available with various reach and payload specifications.

High-Speed SCARA Robot

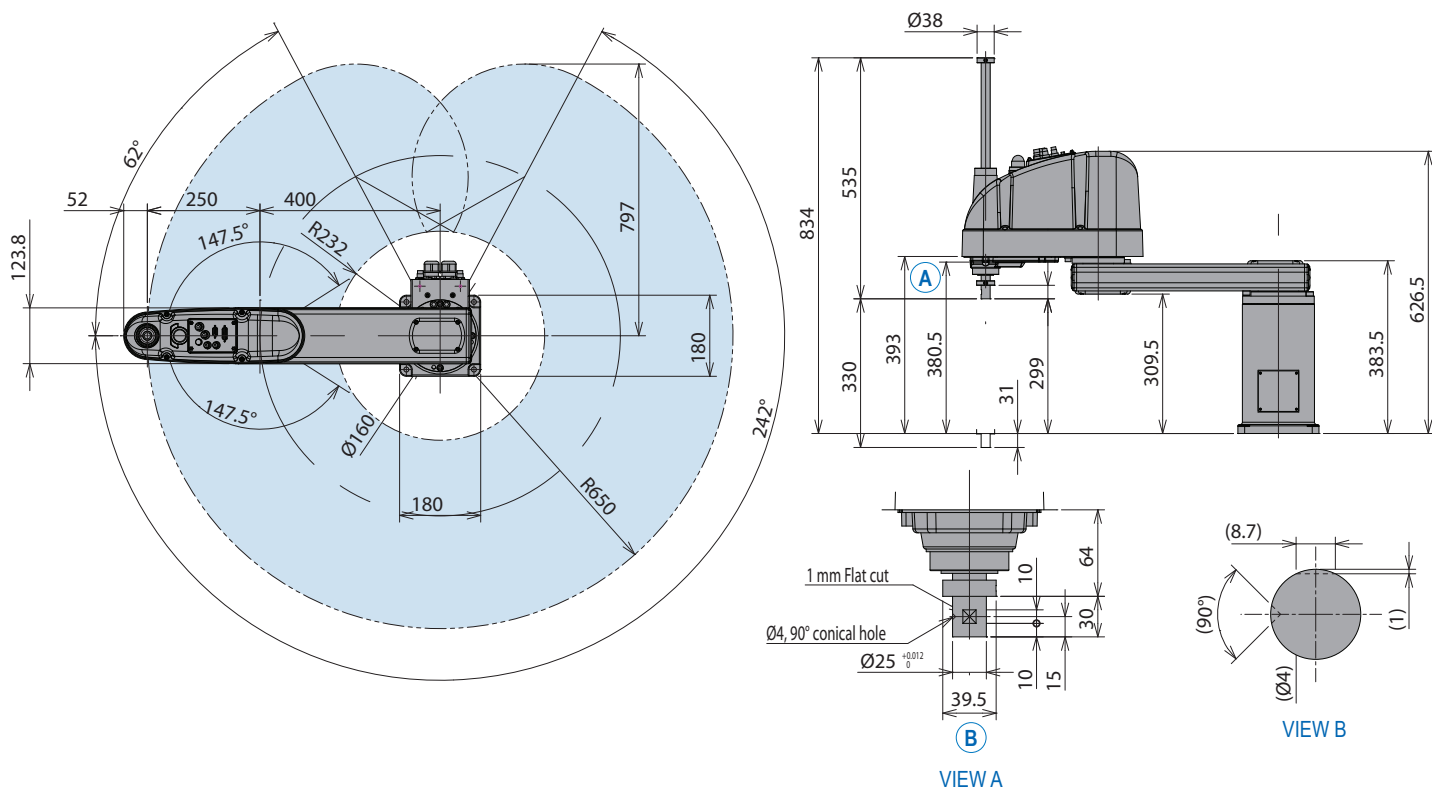
- Offers superior performance in applications such as assembly, dispensing, part kitting, small part handling, case packing, lab automation, packaging, solar and semiconductor processing.
- Ideal for multi-process systems requiring pick-and-place capability.
- Easily integrates with existing robot applications to expand current automated processes.
- Rounds out the Motoman product line of 4-15 axis robots with payloads of 1-800 kg.
- Offers high speed in a compact form that requires minimal mounting space.
- Features a radial reach of 650 mm, long (330 mm) Z-axis stroke and 6 kg maximum payload.
- External axes available, further expanding the capabilities of this flexible asset.
- High repeatability with compliance in X and Y axes make these robots ideal for assembly tasks.

FS100 Controller

- Small, compact controller.
- 470 mm wide, 200 mm high, 420 mm deep.
- Designed for packaging and small parts handling robots with payloads of 20 kg and under.
- Compatible with integrated MotoSight™ 2D vision (optional).
- High-speed I/O response and millisecond resolution timers.
- Open architecture enables software customization in widely accepted environments such as C, C++ and C#.Net.
- Uses same programming pendant hardware as DX100 controller, providing a consistent programming interface with current products.
- Built-in collision avoidance with multiple robots.

MYS650LF ROBOT

All dimensions are metric (mm) and for reference only. Please request detail drawings for all design/engineering requirements.



MYS650LF SPECIFICATIONS

Configuration		Horizontally Articulated
Degrees of Freedom		4
Payload		3 kg (6.6 lb.) rated 6 kg (13.2 lb.) max
Repeatability	S-Axis + L-Axis	±0.015 mm (0.0006")
	U-Axis	±0.01 mm (0.0003")
	R-Axis	±0.005°
Range of Motion	S-Axis + L-Axis	650 mm (25.6")
	S-Axis (1st horizontal arm)	+242°/-62°
	L-Axis (2nd horizontal arm)	±147.5°
	U-Axis (upper/lower)	330 mm (13")
	R-Axis (rotate)	±360°
Maximum Speed	S-Axis	420 °/s
	L-Axis	720 °/s
	U-Axis	2,280 mm/s
	R-Axis	2,400 °/s
Allowable Moment of Inertia	R-Axis	0.01 kg · m ² rated 0.12 kg · m ² max
Approx. Mass		28 kg (61.7 lb.)
Power Rating		1.25 kVA

NOTE: Maximum speed and moment of inertia may vary depending on load.

FS100 CONTROLLER SPECIFICATIONS*

Dimensions (mm)	470 (w) x 200 (h) x 420 (d) (18.5" x 7.9" x 16.5")
Approximate Mass	20 kg (44.1 lbs)
Cooling System	Direct cooling
Ambient Temperature	During operation: 0° to 40° C (32° to 104° F) During transit and storage: -10° to 60° C (14° to 140° F)
Relative Humidity	90% max. non-condensing
Primary Power Requirements	Single-phase or 3-phase power, 200/230 VAC at 50/60 Hz (MPP3, MPK2, MH6F, HP20F require 3-phase)
External Transformer (optional)	For 480/575 VAC installations
Digital I/O	NPN-Standard PNP-Optional
	Standard I/O: 16 inputs/16 outputs Max. I/O (optional): 168 inputs and 168 outputs
Position Feedback	Absolute encoder
Program Memory	JOB: 10,000 steps, 1,000 instructions CIO Ladder: 1,500 steps
Pendant Dim. (mm)	169 (w) x 314.5 (h) x 50 (d) (6.7" x 12.4" x 2")
Pendant Weight	.998 kg (2.2 lbs)
Interface	One Compact Flash slot; One USB port (1.1)
Pendant Playback Buttons	Teach/Play/Remote Keypress selector Servo On, Start, Hold, and Emergency Stop Buttons
Programming Language	INFORM III, menu-driven programming, MotoPlus SDK (C language) – optional
Maintenance Functions	Displays troubleshooting for alarms
Number of Robots/Axes	Up to 2 robots, 16 axes (requires 2 controllers)
Multi Tasking	Up to 6 concurrent jobs, 1 system job
Fieldbus	All common networks supported
Ethernet	10 Base T/100 Base TX
Safety	Dual-channel Emergency Stop Pushbuttons, 3-position Enable Switch, Manual Brake Release

* See FS100 Controller data sheet (DS-509) for complete specifications

www.motoman.com

YASKAWA AMERICA, INC. ■ MOTOMAN ROBOTICS DIVISION
100 AUTOMATION WAY, MIAMISBURG, OHIO 45342
TEL: 937.847.6200 ■ FAX: 937.847.6277

YASKAWA
MOTOMAN ROBOTICS

TECHNICAL SPECIFICATIONS SUBJECT TO CHANGE WITHOUT NOTICE
DS-570 ©2013 YASKAWA AMERICA, INC. AUGUST 2013

MOTOMAN IS A REGISTERED TRADEMARK
ALL OTHER MARKS ARE THE TRADEMARKS AND
REGISTERED TRADEMARKS OF YASKAWA AMERICA, INC.