

MPL100 II

PALLETIZING

KEY BENEFITS

High-performance robot maximizes productivity in layer handling applications

Internally routed air lines and wiring through all robot axes provides maximum system reliability

Palletizes trailer height loads

SPECIFICATIONS

Payload:
100 kg with cabling flange
115 kg without cabling flange

3,149 mm vertical reach

2,150 mm horizontal reach

±0.2 mm repeatability

CONTROLLERS



DX200



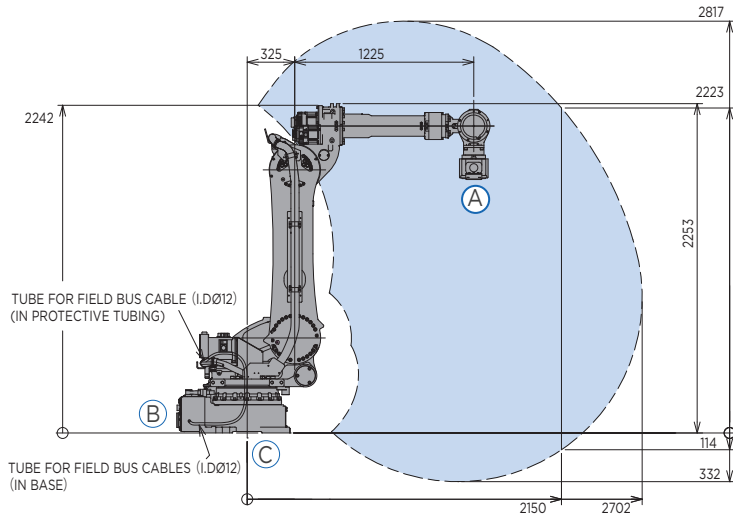
FS100



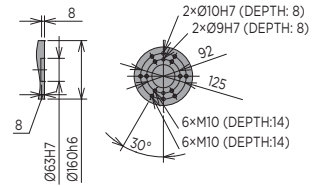
MLX200

- High-performance, 5-axis robot with 100 kg payload capacity and ±0.2 mm repeatability.
- Highly versatile, this robot is ideal for case palletizing, bag palletizing, layer forming and pallet handling, order picking and many logistical tasks for end-of-line or distribution center automation.
- Extensive 3,149 mm vertical reach combined with 2,150 mm horizontal reach enables this robot to build 102 in. tall trailer-high loads on standard 48 in. x 40 in. pallet.
- Hollow wrist offers the flexibility to connect the end-of-arm tool providing wide range of wrist motion without interference.
- T-axis features high allowable moment of inertia; asymmetric loads are handled effectively without compromising speed or performance.
- Cable installation tube in robot base facilitates fieldbus routing to the upper arm and/or gripper.
- Available with PalletSolver™, Yaskawa Motoman's operator-friendly palletizing software suite for fast and easy creation of palletizing patterns.
 - PalletSolver's offline pattern generation tool with intuitive graphical interface allows quick changeovers without halting production.
 - Highly customizable to each palletizing system.
 - Directly imports pallet patterns generated in widely-used TOPS® or CAPE software.

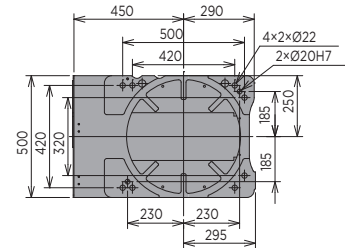
MPL100 II ROBOT



VIEW A

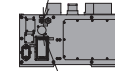


VIEW B

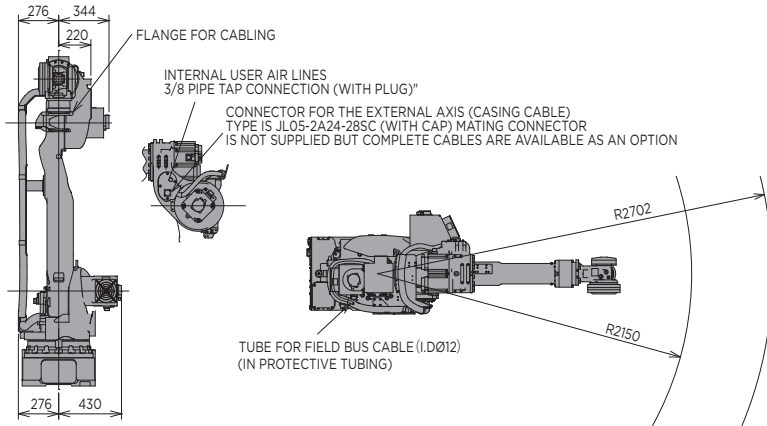


VIEW C

INTERNAL USER AIR LINES 3/8" PIPE TAP CONNECTION (WITH PLUG)



INTERNAL USER WIRING CONNECTOR (BASE SIDE)
JL05-2A24-28PC (WITH CAP)
MATING CONNECTOR IS NOT SUPPLIED, BUT COMPLETE CABLES ARE AVAILABLE AS AN OPTION



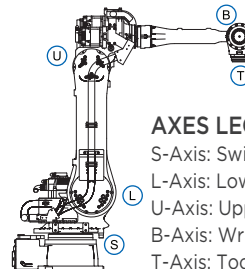
All dimensions are metric (mm) and for reference only.
Request detailed drawings for all design/engineering requirements.

SPECIFICATIONS (WITH CABLING FLANGE)						
Axes	Maximum motion range [°]	Maximum speed [°/sec.]	Allowable moment [N•m]	Allowable moment of inertia [kg•m ²]	Controlled axes	5
S	±180	125	-	-	Maximum payload [kg]	100
L	-60/+76	88	-	-	Repeatability [mm]	±0.2
U	-147/+40	125	-	-	Horizontal reach [mm]	2,150
B	+15*	175	196	88	Vertical reach [mm]	3,149
T	±210*	265	0	55	Protection (IP rating)	IP54
					Weight [kg]	950
					Power requirements	3-phase; 240/480/575 VAC at 50/60 Hz
					Power rating [kVA]	8

* Motion range limited by cabling flange

OPTIONS

- Extended length manipulator cables
- PalletSolver - revolutionary palletizing software
- MotoSight™ - easy to integrate vision software



AXES LEGEND

- S-Axis: Swivel Base
- L-Axis: Lower Arm
- U-Axis: Upper Arm
- B-Axis: Wrist Bend
- T-Axis: Tool Flange

Yaskawa America, Inc.
Motoman Robotics Division

100 Automation Way
Miamisburg, OH 45342
Tel: 937.847.6200
Fax: 937.847.6277

motoman.com

YASKAWA