

# MH80 II

DISPENSING | MACHINE TENDING | MATERIAL CUTTING  
MATERIAL HANDLING | PRESS TENDING

### KEY BENEFITS

High speed increases production.  
High wrist rating provides higher handling capacity.  
Applicable for use in a variety of applications.

### SPECIFICATIONS

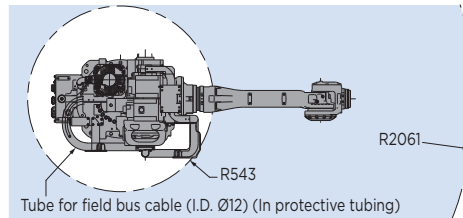
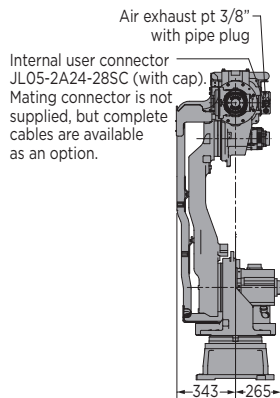
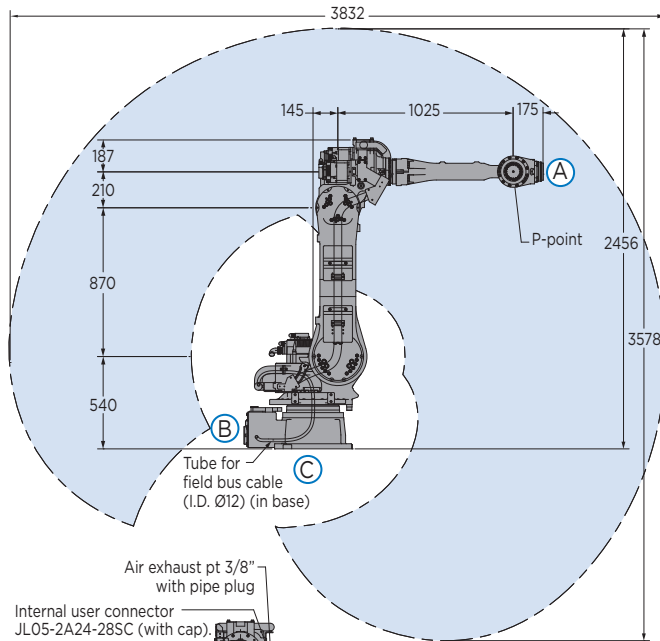
80 kg payload  
2,061 mm horizontal reach  
3,578 mm vertical reach  
±0.07 mm repeatability

### CONTROLLERS

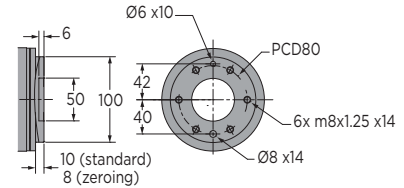
DX200     FS100     MLX200

- Powerful, high-speed robot offers superior performance in dispensing, material cutting, machine tending, press tending and handling applications.
- Wide work envelope with small interference zone allows robot to be placed close to workpieces/equipment, which reduces required floorspace.
- Highly reliable, six-axis robot features high-rigidity speed reducers and high-speed motion which reduce cycle times.
- High payload and moment and inertia ratings allow this robot to handle vision, laser tracking or other sensors for seam tracking applications.
- Cables and air lines are routed through robot base to upper arm to increase cable life, enhance safety and reduce teaching time.
- Cable installation tube in robot base facilitates fieldbus routing to the upper arm and/or gripper.
- The MH80 II robot can be floor-, wall- or ceiling-mounted. Brakes on all axes.
- Mounting for peripheral equipment is provided in multiple locations to make integration easier.
- The MH80 II robot features an IP67-rated wrist and an IP54-rated body. An IP65-rated body is available with the foundry hardened, eXtra Protection option.
- Anti-corrosive paint is available as an option when the robot is to be installed in a harsh environment.

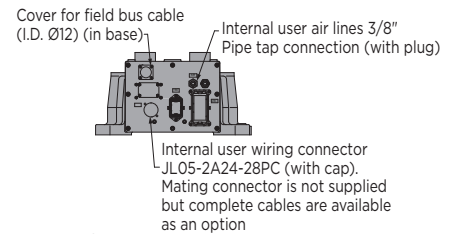
# MH80 II ROBOT



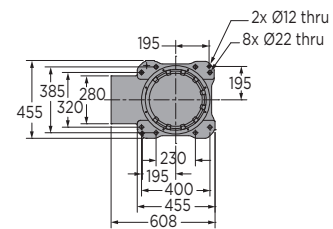
## VIEW A



## VIEW B



## VIEW C



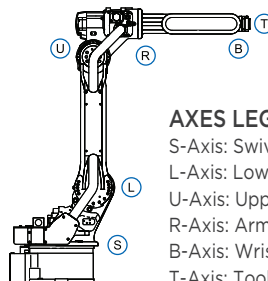
All dimensions are metric (mm) and for reference only.  
Request detailed drawings for all design/engineering requirements.

## SPECIFICATIONS: MH80 II

Axes	Maximum motion range [°]	Maximum speed [°/sec.]	Allowable moment [N•m]	Allowable moment of inertia [kg•m <sup>2</sup> ]	Controlled axes	6
S	±180	170	-	-	Maximum payload [kg]	80
L	+135/-90	140	-	-	Repeatability [mm]	±0.07
U	+251/-170	160	-	-	Horizontal reach [mm]	2,061
R	±360	230	392	28	Vertical reach [mm]	3,578
B	±125	230	392	28	Temperature [°C]	0 to +45
T	±360	350	196	11	Humidity (non-condensing) [%]	20 - 80
					Weight [kg]	555
					Power supply, average [kVA]	4.5
					Internal I/O cable [conductors w/ ground]	24
					Internal air line [connections]	(1) 3/8"

## OPTIONS

- Extended length manipulator cables
- Robot risers and base plates
- External axis kits
- Wide variety of fieldbus cards
- Vision systems
- Robot base and upper arm I/O cables



### AXES LEGEND

- S-Axis: Swivel Base
- L-Axis: Lower Arm
- U-Axis: Upper Arm
- R-Axis: Arm Roll
- B-Axis: Wrist Bend
- T-Axis: Tool Flange

Yaskawa America, Inc.  
Motoman Robotics Division

100 Automation Way  
Miamisburg, OH 45342  
Tel: 937.847.6200  
Fax: 937.847.6277

[motoman.com](http://motoman.com)

# YASKAWA