

## Motoman® NX100 Controller

# Programming Pendant Applications

Part Number: 153643-1CD  
Revision 1

Motoman offers several pendant based applications that enable the user to perform multiple tasks directly from the programming pendant. Applications have been developed to allow the user to monitor I/O, log maintenance records, interface with welding power supplies, among others.

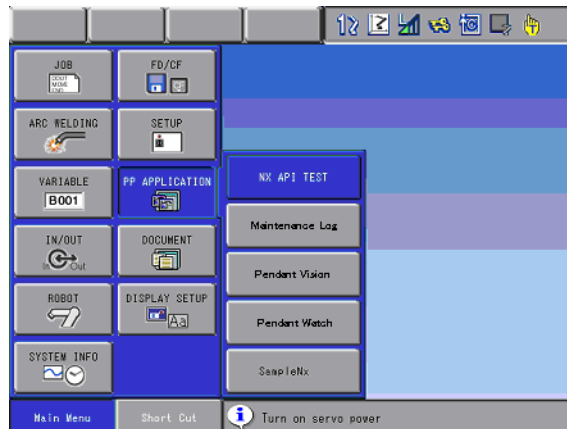


*Note: Depending on various factors, such as additional pendant programs installed, options, software versions, etc., pendant applications may require the use of a 64 MB pendant (Part Number 149450-3). Currently pendant applications are limited to robot software version 3.63A-44.*

## 1 Accessing Your Pendant Applications

To access your pendant applications:

1. Select the [PP Application] menu button. A sub menu of installed applications is displayed.



2. Select the application you want you use.

## 2 Customer Support Information

If you need technical assistance with your Programming Pendant Applications, please contact Motoman Customer Support at the following 24-hour telephone number –

**937. 847. 3200**

Please have the following information ready before you call –

- SYSTEM — Programming Pendant Applications
- ROBOTS — IA20, EA1400, HP50, etc.
- CONTROLLER — NX100
- PRIMARY APPLICATION — Handling, Arc Welding, etc.
- SOFTWARE VERSION — Access this information on the Programming Pendant display screen by selecting MAIN MENU → SYSTEM INFO → VERSION
- ROBOT SERIAL No — Located on data plate of robot
- ROBOT SALES ORDER No — Located on data plate of NX100 controller
- WARRANTY ID CODE — Located on back of the Programming Pendant

The information contained within this document is the proprietary property of Motoman, Inc., and may not be copied, reproduced or transmitted to other parties without the expressed written authorization of Motoman, Inc.

©2007 by **MOTOMAN**<sup>®</sup>  
All Rights Reserved

Because we are constantly improving our products, we reserve the right to change specifications without notice.  
MOTOMAN<sup>®</sup> is a registered trademark of YASKAWA Electric Manufacturing.