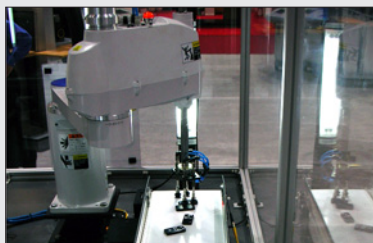
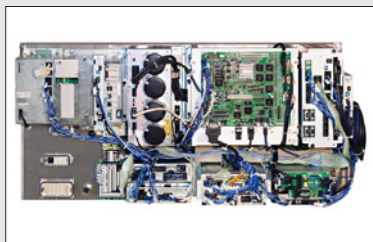




DXM100 CONTROLLER



PACKAGING

PANEL-MOUNT
CONTROLLER (OPTIONAL)

TOP REASONS TO BUY

- Uses the same controller as larger Motoman robots
- Easy vision integration with MotoSight 2D, a Cognex In-Sight based vision system
- Yields extraordinary production results, while requiring minimal capital investment
- High work envelope to mounting surface ratio
- Flexible asset; easily re-deployable as production needs change



MYS-series 4-axis SCARA robots are ideal for high-speed handling and assembly systems. Several models are available with various reach and payload specifications.

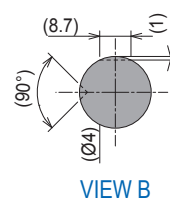
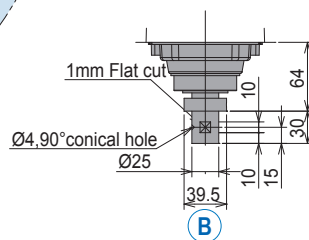
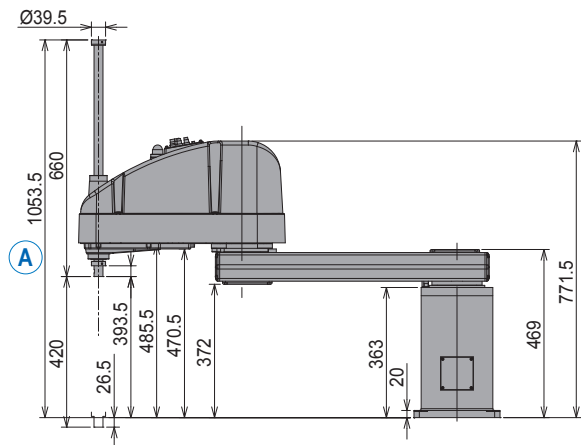
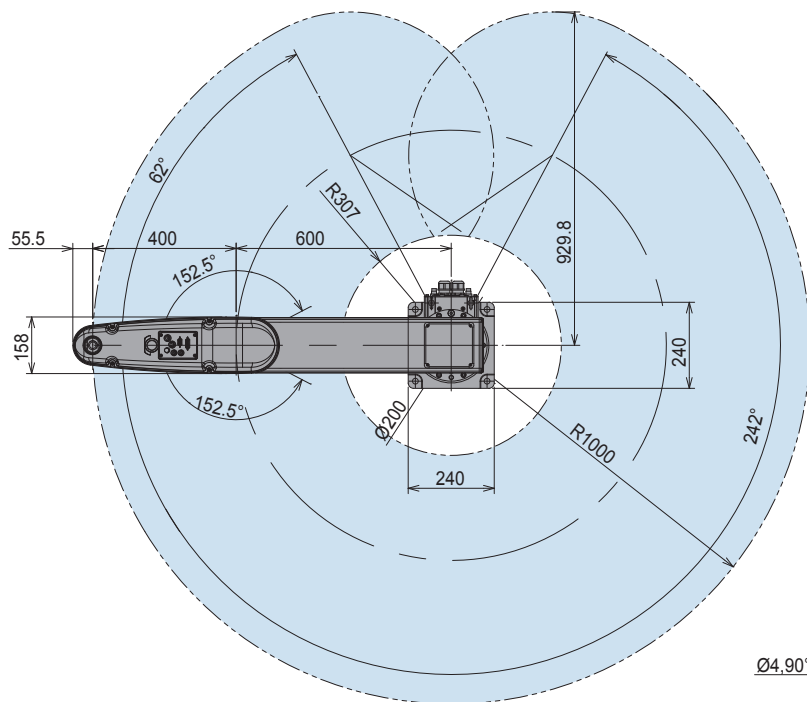
High-Speed SCARA Robot

- Offers superior performance in applications such as assembly, dispensing, part kitting, small part handling, case packing, lab automation, packaging, solar and semiconductor processing.
- Ideal for multi-process systems requiring pick-and-place capability.
- Easily integrates with existing robot applications to expand current automated processes.
- Rounds out the Motoman product line of 4-15 axis robots with payloads of 1-800 kg.
- Uses same controller as other Motoman robots. Enclosure size may vary depending on robot size and payload.
- Offers high speed in a compact form that requires minimal mounting space.
- Features a radial reach of 1,000 mm, long (420 mm) Z-axis stroke and 20 kg maximum payload.
- External axes available, further expanding the capabilities of this flexible asset.

- High repeatability with compliance in X and Y axes make these robots ideal for assembly tasks.

DXM100 Controller

- Smaller-size DXM100 controller provides layout flexibility.
- Patented multiple robot control supports up to 8 robots/72 axes.
- Windows® CE programming pendant with color touch screen and USB interface.
- Faster processing speeds for smoother interpolation. Quicker I/O response. Accelerated Ethernet communication.
- Extensive I/O suite includes integral PLC and touch screen HMI, 2,048 I/O and graphical ladder editor.
- Supports all major fieldbus networks, including EtherNet/IP, DeviceNet, Profibus-DP and many others.
- Compliant to ANSI/RIA R15.06-1999 and other relevant ISO and CSA safety standards. Optional Category 3 functional safety unit.
- Built-in collision avoidance with multiple robots.



VIEW A

VIEW B

MYS1000 SPECIFICATIONS

Configuration		Horizontally Articulated
Degrees of Freedom		4
Payload		10 kg (22.1 lb.) rated 20 kg (44.1 lb.) max
Repeatability	S-Axis + L-Axis	±0.025 mm (0.001")
	U-Axis	±0.01 mm (0.0003")
	R-Axis	±0.005°
Range of Motion	S-Axis + L-Axis	1,000 mm (39.4")
	S-Axis (1st horizontal arm)	+242°/-62°
	L-Axis (2nd horizontal arm)	±152.5°
	U-Axis (upper/lower)	420 mm (16.5")
Maximum Speed	R-Axis (rotate)	±360°
	S-Axis	405 °/s
	L-Axis	648 °/s
	U-Axis	2,315 mm/s
Allowable Moment of Inertia	R-Axis	0.05 kg • m ² rated 0.45 kg • m ² max
Approx. Mass		48 kg (105.8 lb.)
Power Rating		1.25 kVA

NOTE: Maximum speed and moment of inertia may vary depending on load.

DXM100 CONTROLLER SPECIFICATIONS* (SCARA ROBOTS)

Dimensions (mm)	800 (w) x 600 (h) x 650 (d) (31.5" x 23.6" x 25.6")
Approximate Mass	250 kg max. (551.3 lbs)
Cooling System	Indirect cooling
Ambient Temperature	During operation: 0° to 40° C (32° to 104° F) During transit and storage: -10° to 60° C (14° to 140° F)
Relative Humidity	80% max. non-condensing
Primary Power Requirements	3-phase, 240/480/575 VAC at 50/60 Hz
Digital I/O	Standard I/O: 40 inputs/40 outputs consisting of 16 system inputs/ 16 system outputs, 24 user inputs/24 user outputs 32 Transistor Outputs; 8 Relay Outputs Max. I/O (optional): 2,048 inputs and 2,048 outputs
Position Feedback	By absolute encoder
Program Memory	JOB: 200,000 steps, 10,000 instructions CIO Ladder Standard: 15,000 steps Expanded: 20,000 steps
Pendant Dim. (mm)	169 (w) x 314.5 (h) x 50 (d) (6.7" x 12.4" x 2")
Pendant Weight	.998 kg (2.2 lbs)
Interface	One Compact Flash slot; One USB port (1.1)
Pendant Playback Buttons	Teach/Play/Remote Keyswitch selector Servo On, Start, Hold, and Emergency Stop Buttons
Programming Language	INFORM III, menu-driven programming,
Maintenance Functions	Displays troubleshooting for alarms
Number of Robots/Axes	Up to 8 robots, 72 axes
Multi Tasking	Up to 16 concurrent jobs, 4 system jobs
Fieldbus	DeviceNet Master/Slave, AB RIO, Profibus, Interbus-S, M-Net, CC Link, EtherNet IP/Slave
Ethernet	10 Base T/100 Base TX
Safety	Dual-channel Emergency Stop Pushbuttons, 3-position Enable Switch, Manual Brake Release Meets ANSI/RIA R15.06-1999, ANSI/RIA/ISO 10218-1-2007 and CSA Z434-03

*See DX100 Controller data sheet (DS-399) for complete specifications