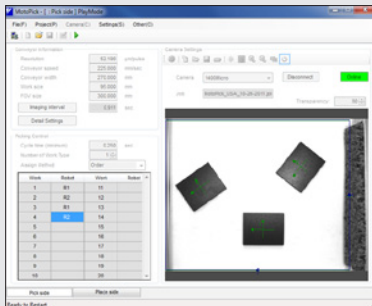




FAMILIAR PROGRAMMING INTERFACE



MOTOPICK SOFTWARE



FS100 CONTROLLER

TOP REASONS TO BUY

- High-speed operation – up to 150 cycles per minute
- Zero footprint allows better space utilization
- Ideal for high density robot installations
- Simplified wrist design provides higher reliability
- Yields extraordinary production results with high-speed and reliable design



MPP3

ASSEMBLY • CARTONING • KITTING • PACKAGING
PART TRANSFER • PICK AND PLACE

Payload: 3 kg

Compact and Powerful

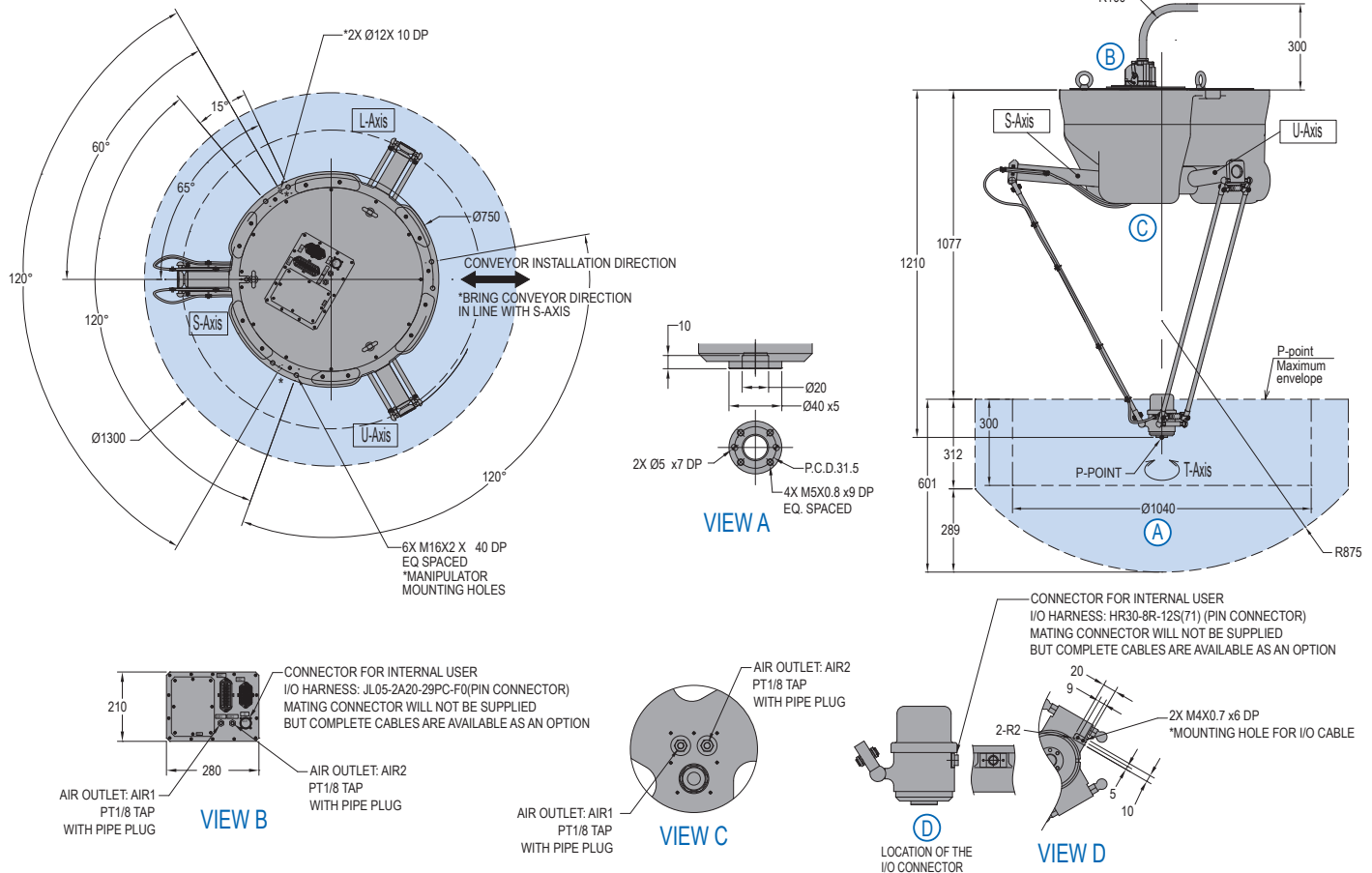
- Zero-footprint, high-speed robot for pick-place, inspecting, sorting and kitting applications.
- Rotary axis is direct driven to simplify design and increase reliability.
- 3 kg maximum payload. Performance is optimized to payload.
- 600 mm vertical stroke enables picking and placing in deep boxes.
- Space-optimized design with compact base and short arm radii for high-density installations.
- Seamless covers to promote easy cleaning and prevent contamination.
- Acid and alkali resistant urethane paint.
- IP65 robot with NSF-H1 certified food-grade grease.

FS100 Controller

- Small, compact controller.
- 470 mm wide, 200 mm high, 420 mm deep.
- Designed for packaging and small parts handling robots with payloads of 20 kg and under.
- Compatible with integrated MotoSight™ 2D vision (optional).
- Improved communication speeds and functionality.
- High-speed I/O response and high-resolution timers.
- Open architecture enables software customization in widely accepted environments such as C, C++, C# and .NET.
- Uses same programming pendant hardware as DX100 controller, providing a consistent programming interface with current products.

MPP3 ROBOT

All dimensions are metric (mm) and for reference only. Please request detail drawings for all design/engineering requirements.



MPP3 SPECIFICATIONS

Structure	Parallel Arm/Delta	
Mounting	Ceiling	
Controlled Axes	4	
Payload	3 kg (6.6 lbs)	
Repeatability	±0.1 mm (±0.004")	
Repetitive Rotational Accuracy (T-Axis)	±1 arc-min	
Range of Motion (mm)	Ø1300 X H312 (H600 max)	
T-Axis	Maximum Speed	1,200°/s
	Range of Motion	±360°
	Allowable Moment	0.167 N • m
	Allowable Inertia (GD²/4)	0.017 kg • m ²
IP Rating	IP65	
Mass	115 kg (253.6 lbs)	
Brakes	All axes	
Power Requirement	3-phase	
Power Consumption	1.5 kVA	
Operating Temperature	0° to 40° C (32° to 104° F)	
Relative Humidity	20% to 80%, non-condensing	

FS100 CONTROLLER SPECIFICATIONS*

Dimensions (mm)	470 (w) x 200 (h) x 420 (d) (18.5" x 7.9" x 16.5")
Approximate Mass	20 kg (44.1 lbs)
Cooling System	Direct cooling
Ambient Temperature	During operation: 0° to 40° C (32° to 104° F) During transit and storage: -10° to 60° C (14° to 140° F)
Relative Humidity	90% max. non-condensing
Primary Power Requirements	Single-phase or 3-phase power, 200/230 VAC at 50/60 Hz (MPP3, MPK2, MH6F, HP20F require 3-phase)
External Transformer (optional)	For 480/575 VAC installations
Digital I/O	Standard I/O: 16 inputs/16 outputs Max. I/O (optional): 168 inputs and 168 outputs
Position Feedback	Absolute encoder
Program Memory	JOB: 10,000 steps, 1,000 instructions C/O Ladder: 1,500 steps
Pendant Dim. (mm)	169 (w) x 314.5 (h) x 50 (d) (6.7" x 12.4" x 2")
Pendant Weight	.998 kg (2.2 lbs)
Interface	One Compact Flash slot; One USB port (1.1)
Pendant Playback Buttons	Teach/Play/Remote Keyswitch selector Servo On, Start, Hold, and Emergency Stop Buttons
Programming Language	INFORM III, menu-driven programming, MotoPlus SDK (C language) – optional
Maintenance Functions	Displays troubleshooting for alarms
Number of Robots/Axes	Up to 2 robots, 16 axes (requires 2 controllers)
Multi Tasking	Up to 6 concurrent jobs, 1 system job
Fieldbus	All common networks supported
Ethernet	10 Base T/100 Base TX
Safety	Dual-channel Emergency Stop Pushbuttons, 3-position Enable Switch, Manual Brake Release

Note: Use DX100 controller for arc welding applications.
* See FS100 Controller data sheet (DS-509) for complete specifications

www.motoman.com

YASKAWA AMERICA, INC. ■ MOTOMAN ROBOTICS DIVISION
100 AUTOMATION WAY, MIAMISBURG, OHIO 45342
TEL: 937.847.6200 ■ FAX: 937.847.6277

YASKAWA
MOTOMAN ROBOTICS

TECHNICAL SPECIFICATIONS SUBJECT TO CHANGE WITHOUT NOTICE
DS-508-C ©2013 YASKAWA AMERICA, INC. JUNE 2013

MOTOMAN IS A REGISTERED TRADEMARK
ALL OTHER MARKS ARE THE TRADEMARKS AND
REGISTERED TRADEMARKS OF YASKAWA AMERICA, INC.