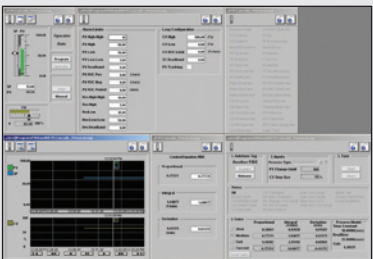


CASE PACKING



BAG PALLETIZING



PROGRAM FROM RSLOGIX



MPK50

with MLX100 Robot Gateway

MATERIAL HANDLING • PACKING • PALLETIZING

Payload: 50 kg

The MPK50 is a high-performance 4-axis robot designed for material handling, case-packing and palletizing applications.

TOP REASONS TO BUY

- Program the robot, logic, communication and peripheral motion directly from one common programming environment – RSLogix 5000
- Wide, 360-degree work envelope; minimum interference radius
- IP67 wrist makes it suitable for harsh environments
- Polyurethane paint with NSF-H1 food-grade grease option enables use in food and pharmaceutical applications
- Slim 4-axis design with high axial speeds makes it an ideal choice for packing

Fast, Flexible and Powerful

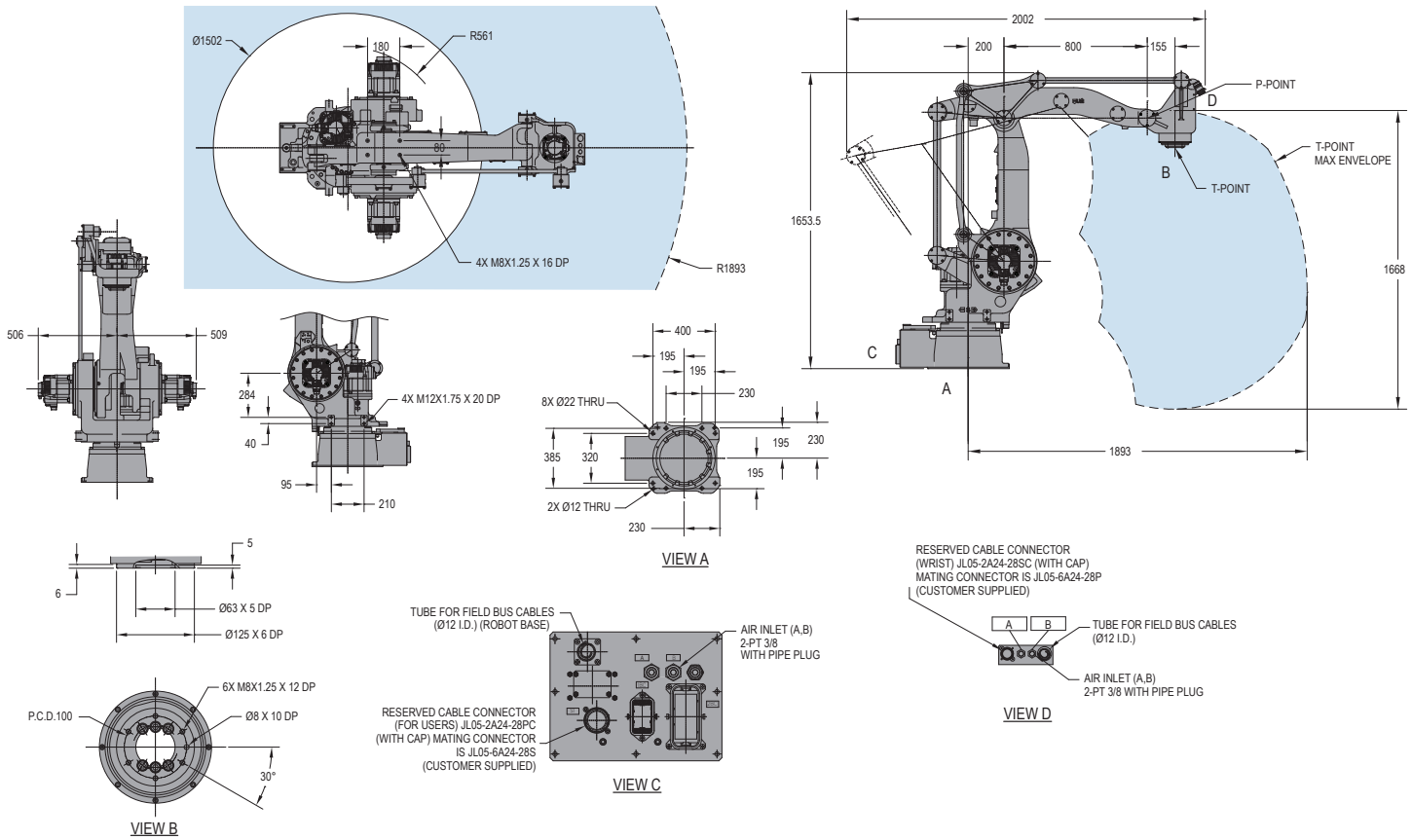
- High speed, 4-axis robot provides superior performance and reliability for packing, palletizing and other material handling applications.
- Large work envelope with full 360-degree rotation.
- 50 kg payload: 1,668 mm vertical reach; 1,893 mm horizontal reach; ±0.5 mm repeatability.
- Slim design allows robot to reach into confined spaces, improving system productivity.
- IP54 arm with IP67 wrist.
- NSF-H1 certified food-grade grease option available.

MLX100 Robot Gateway

- The MLX100 Robot Gateway™ provides a single unified controls platform for the robot, motion, logic and communications all in a single platform.
- Robot kinematics and motion planning is performed on the MLX100 Robot Gateway minimizing ControlLogix® processor demand.
- The robot is programmed entirely on RSLogix™ 5000 using Add-On-Instructions (AOIs) in a ladder format that is familiar to your current maintenance department.
- I/O and motion expansion is accomplished via the ControlLogix platform.
- Robot-specific drives are delivered on a compact panel suitable for installation in the existing machine.
- The MLX100 Robot Gateway is available with a wide range of Motoman® robots.

MPK50 ROBOT with MLX100 ROBOT GATEWAY

All dimensions are metric (mm) and for reference only. Please request detail drawings for all design/engineering requirements.

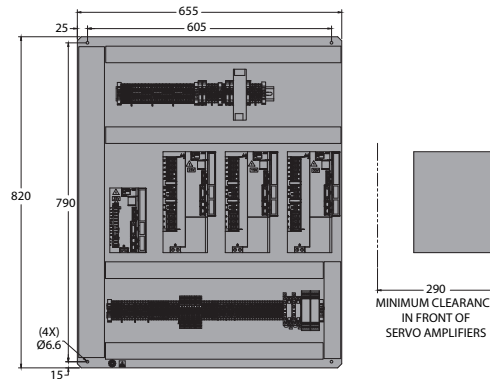


MPK50 SPECIFICATIONS (WITH MLX100 ROBOT GATEWAY)

Structure	Vertical articulated type	
Controlled Axes	4	
Payload	50 kg (110.3 lbs)	
Vertical Reach	1,668 mm (65.7")	
Horizontal Reach	1,893 mm (74.5")	
Repeatability	±0.5 mm (0.02")	
Maximum Motion Range	S-Axis (Turning/Sweep)	±180°
	L-Axis (Lower Arm)	+80°/-35
	U-Axis (Upper Arm)	+15°/-105
	T-Axis (Wrist Twist)	±350°
Maximum Speed	S-Axis	176°/s
	L-Axis	172°/s
	U-Axis	172°/s
	T-Axis	336°/s
Approximate Mass	670 kg (1,477.4 lbs)	
Brakes	All axes	
Power Rating	6 kVA	
T-Axis Allowable Inertia	5.5 kg · m ²	
Internal User Electrical Cable	23 conductors + ground	
Internal User Air Hose	2 - 3/8" PT connectors	

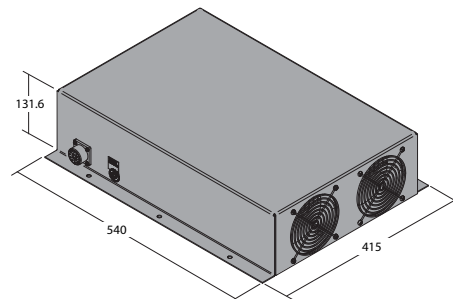
MLX100 Robot Gateway Drive Panel

Note: Gateway card will be mounted in a ControlLogix rack that is not shown.



MLX100 Regenerative Resistor Pack

To be mounted on enclosure exterior



www.motoman.com

YASKAWA

MOTOMAN ROBOTICS

YASKAWA AMERICA, INC. ■ MOTOMAN ROBOTICS DIVISION
100 AUTOMATION WAY, MIAMISBURG, OHIO 45342
TEL: 937.847.6200 ■ FAX: 937.847.6277

TECHNICAL SPECIFICATIONS SUBJECT TO CHANGE WITHOUT NOTICE
DS-494-C ©2013 YASKAWA AMERICA, INC. JUNE 2013

MOTOMAN IS A REGISTERED TRADEMARK
RSLOGIX IS A TRADEMARK OF ROCKWELL AUTOMATION, INC.
CONTROLLOGIX IS A REGISTERED TRADEMARK OF ROCKWELL AUTOMATION, INC.
ALL OTHER MARKS ARE THE TRADEMARKS AND REGISTERED TRADEMARKS OF YASKAWA AMERICA, INC.