

HP20

CASE PACKING | DISPENSING | KITTING | MACHINE TENDING



KEY BENEFITS

Applicable for use in a variety of applications

Performance-driven, compact design

Reliable operation with internal cables

SPECIFICATIONS

20 kg maximum payload
3,063 mm vertical reach
1,717 mm horizontal reach
±0.06 mm repeatability

CONTROLLERS



DX200



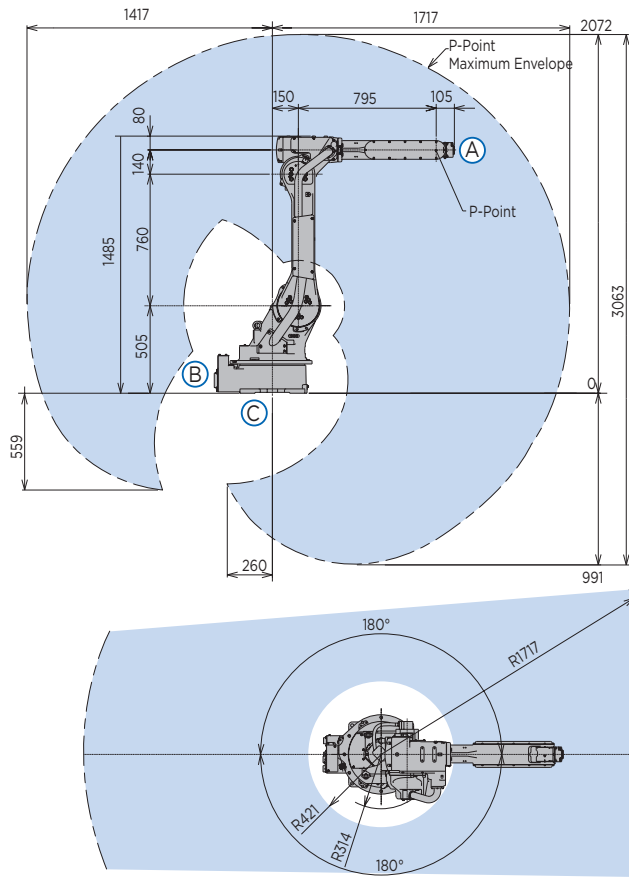
FS100



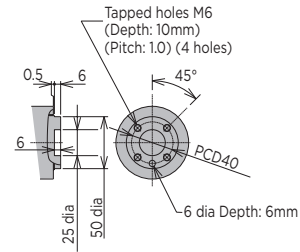
MLX200

- Versatile robot with 20 kg payload capacity is ideal for many applications, such as picking, sorting, case packing, machine tending and dispensing.
- Extensive 3,063 mm vertical and 1,717 mm horizontal reach combined with floor, ceiling or wall mounting options makes this robot suitable for compact installation requirements without compromising on reach.
- Fast motion profiles and high moment of inertia wrist design enables the HP20 robot to maintain throughput with heavy, unbalanced loads.
- Auxiliary equipment (up to 11 kg) can be mounted on the upper arm to simplify end-of-arm tool design.
- Internally routed airlines and cables from base to the end-of-arm tool maximizes reliability of operation.
- The HP20 easily adapts to harsh environments with the eXtra Protection (XP) package which provides an IP65-rated body, IP67-rated wrist and special anti-corrosive coating.
- An anti-corrosive paint option is available for environments where harsh acidic or alkaline cleaners are used, such as food processing facilities.
- Ideally suited for use in high-density work cells with multiple robots working in close proximity.

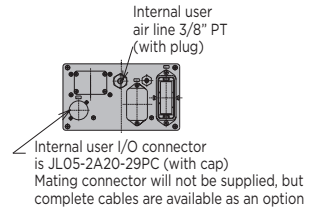
HP20 ROBOT



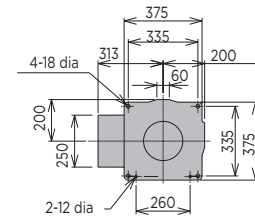
VIEW A



VIEW B



VIEW C



All dimensions are metric (mm) and for reference only.
Request detailed drawings for all design/engineering requirements.

SPECIFICATIONS

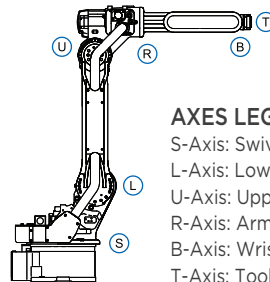
Axes	Maximum motion range [°]	Maximum speed [°/sec.]		Allowable moment [N•m]	Allowable moment of inertia [kg•m ²]	Controlled axes	
		FS100	MLX200			Maximum payload [kg]	
S	±180	197	157.6	-	-	6	20
L	-100/+155	175	175	-	-	Repeatability [mm]	±0.06
U	-165/+255	205	205	-	-	Horizontal reach [mm]	1,717
R	±200	400	400	39.2	1.05	Vertical reach [mm]	3,063
B	-50/+230	400	400	39.2	1.05	Protection (IP rating)	Standard Body: IP54; Wrist IP67
T	±360	600	600	19.6	0.75	XP version	Body: IP65; Wrist IP67
						Weight [kg]	268
						Power requirements	3-phase; 230 VAC at 50/60 Hz
						Power rating [kVA]	Standard 2.0
						XP version	2.5

OPTIONS

Extended length manipulator cables

MotoPick™ - scheduler and picking software integrated with vision and conveyor tracking

MotoSight™ - easy to integrate vision software



AXES LEGEND

- S-Axis: Swivel Base
- L-Axis: Lower Arm
- U-Axis: Upper Arm
- R-Axis: Arm Roll
- B-Axis: Wrist Bend
- T-Axis: Tool Flange

Yaskawa America, Inc.
Motoman Robotics Division

100 Automation Way
Miamisburg, OH 45342
Tel: 937.847.6200
Fax: 937.847.6277

motoman.com

