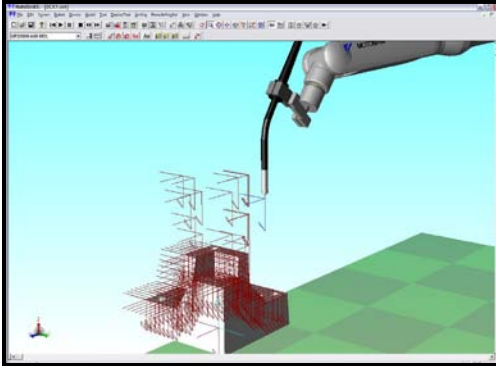


# G-Code Converter EG



## Convert G-Code to Robot Programs

G-Code Converter EG is an option of Points Importer EG. It converts standard CNC G-Code programs into Motoman® robot programs. The translated robot programs include I/O and other non-motion commands. CNC programs as large as 30,000 points can be converted in approximately 1 to 30 minutes (depending on PC processor) and are complete and ready to run.

One version of MotoSim® EG Off-line Programming System is required to be installed on the same computer.

## HIGHLIGHTS

### Maximum Adaptability

- Extremely flexible and can be modified to read in any G-Code format such as DeLCAM®, SURFCAM®, GibbsCAM® or other proprietary G-Code file formats.

### Operational Examples

- Three different example simulation cells and G-Code file formats are provided.

### Customizable

- I/O and other commands can be adjusted for CNC-to-robot variations.
- All customized changes are contained in an XML configuration file. The software can support multiple G-Code formats by simply changing this XML configuration file.
- Allows custom mapping of machine functions to robot functions.

### Intuitive Programming Interface

- Easy-to-use for machine operators with step-by-step process to convert CNC files to robot programs.

### Easy-to-use Operator Interface

- Convert existing machine tool operations into robot programs without interrupting production.
- Automatically splits large processes into multiple subroutines for robot operations.

### Capital Equipment Savings

- Optimizes use of capital by utilizing standard, six-axis devices to perform lower-tolerance machining processes.

### Reduce Programming Time

- Minimizes cost to generate robot programs and leverages time and effort already spent generating machine tool programs.

### Multi-Process

- Flexibility to perform material removal, part insertion and assembly operations in same cell.

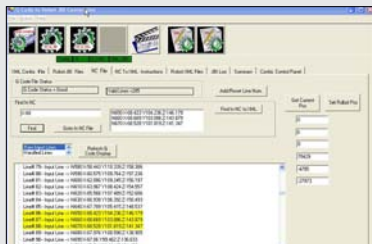
### Calibration Requirements

- Calibration of the robot is highly suggested since tolerances and accuracy must be considered. The system configuration must support the appropriate requirements.

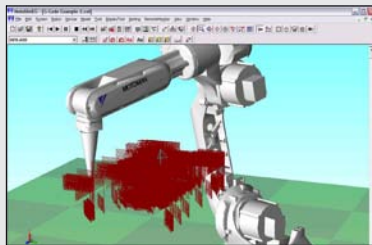
- MotoCal® calibration performed by Motoman is available before it leaves the factory.
- Field MotoCal calibration is available through Motoman Robotics' Customer Satisfaction Group.
- MotoCal is available to enable customers to perform calibrations on their own. Accessory items for your specific robot are not included with MotoCal.

### ARM YOURSELF...

...with the G-Code Converter EG and use high-performance flexible robots to perform many CNC machine tasks faster, cleaner and at a lower cost.



CNC FILES



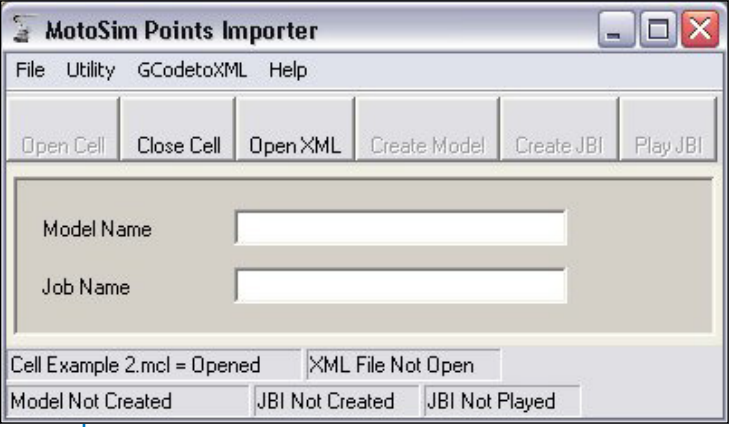
SIMULATION OF SOLUTION

## TOP REASONS TO BUY!

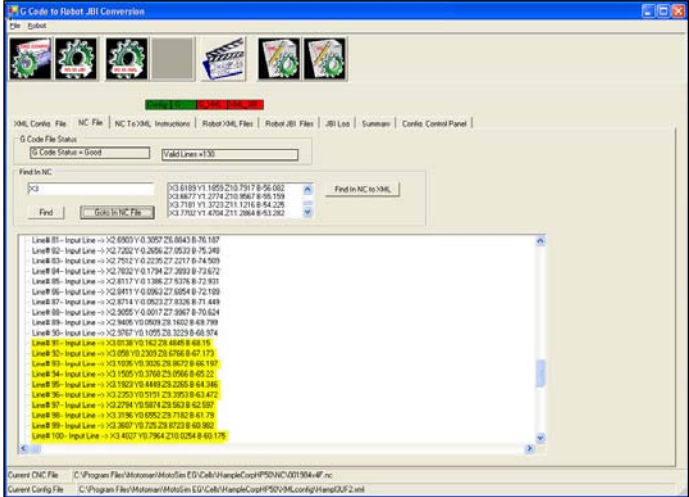
- Productivity enhancement tool! Ideal for users that have a mix of CNC machines and robots in their shop or individuals who know G-Code programming
- Ideally suited for customers working with third-party CAD/CAM expert packages for applications such as material removal, grinding, mold creation, surface finishing or drilling and tapping
- Make your robot work like a CNC

# G-CODE CONVERTER EG

## SCREENS



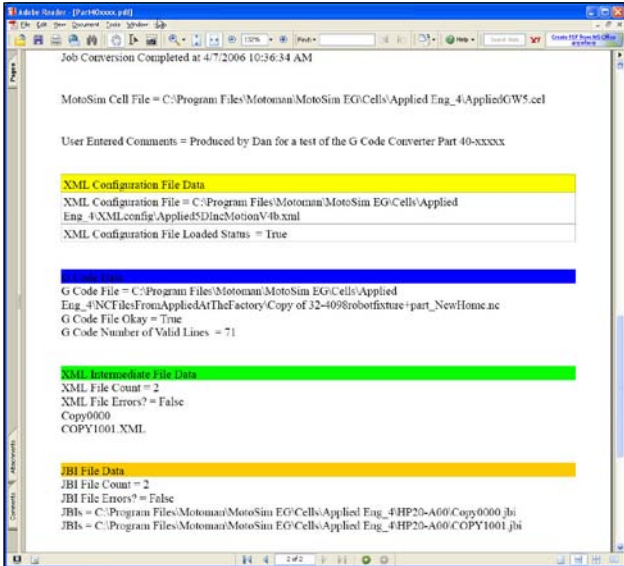
G-CODE CONVERTER IS LAUNCHED FROM THE POINTS IMPORTER MENU.



G-CODE VIEWER ALLOWS USERS TO FIND DATA QUICKLY.



THE CONFIGURATION FILE IS LOADED.



G-CODE CAN CREATE STATUS REPORTS THAT SHOW INPUT, OUTPUT AND INTERMEDIATE FILES AND ASSOCIATED ERRORS.

### MINIMUM SYSTEM REQUIREMENTS

- Windows XP
- 2 GHz processor
- 2+ open USB ports for USB keys
- PCMCIA slot
- MotoSim EG: 2.01 or greater (Currently not supported by MotoSim EG-VRC)
- Points Importer EG

### RECOMMENDED SYSTEM REQUIREMENTS

- 1 GB RAM
- 3 GHz processor
- Third-Party CAD/CAM system
- XML file editing capability
- Dual monitors

### COMPATIBILITY

- DX100 controller
- NX100 controller
- XRC controller

[www.motoman.com](http://www.motoman.com)

MOTOMAN ROBOTICS  
100 AUTOMATION WAY, MIAMISBURG, OHIO 45342  
TEL: 937.847.6200 ■ FAX: 937.847.6277

  
MOTOMAN ROBOTICS

MOTOMAN IS A REGISTERED TRADEMARK OF MICROSOFT  
WINDOWS IS A REGISTERED TRADEMARK OF MICROSOFT  
ALL OTHER MARKS ARE THE TRADEMARKS AND REGISTERED TRADEMARKS OF YASKAWA AMERICA, INC.

TECHNICAL SPECIFICATIONS SUBJECT TO CHANGE WITHOUT NOTICE  
DS-309-E ©2011 YASKAWA AMERICA, INC. JUNE 2011