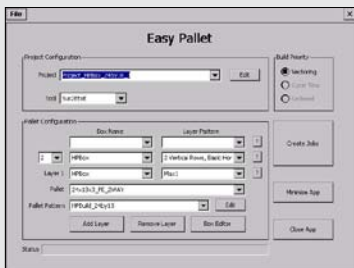


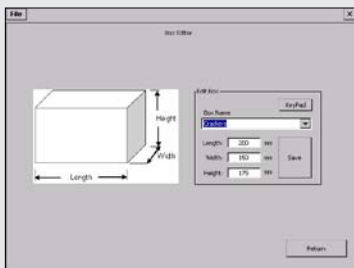
# EasyPallet Pendant

## EasyPallet Pendant Palletizing Software

Motoman Robotics' EasyPallet™ Pendant software makes creating full-featured robotic palletizing programs for Motoman® robots fast and easy – even for inexperienced programmers. Selections are made on the robot teach pendant and programs are generated automatically – all in as little as one to five minutes, with as few as one to three menu or button selections.



MAIN SCREEN



BOX EDITOR

### TOP REASONS TO BUY!

- Simple to use palletizing software, even for inexperienced programmers.
- Palletizing tools are all on the programming pendant.
- Robust, full-featured palletizing programs can be created in one to five minutes.

### Fast, Flexible and Full-Featured

- EasyPallet Pendant quickly and easily creates a suite of full-featured robot palletizing jobs, including automatic vectoring to eliminate box clipping when building tight patterns, automatic asynchronous placement to save cycle time, user selectable job formats, and unparalleled job customization.
- EasyPallet's more than 200 "canned" palletizing patterns are independent of box sizes. This allows a box size to be applied to any stacking pattern to create a unique layer configuration.
- Patterns adjust to new box and pallet sizes, saving programming time.
- Layers can be stacked on top of one another, resulting in a column-stacked pallet or they can be rotated for an interlocked pallet.
- Each layer is unique, which provides the ability to place layers of different product on the same pallet.

### HIGHLIGHTS

- EasyPallet supports vacuum-style grippers capable of picking one to four boxes stacked end-to-end or side-to-side.
- Job output is available in joint or Cartesian coordinates.
- Pallet state is maintained by a set of variables, allowing recovery if needed.
- Job customization is available for use by more experienced programmers.
- Traditional point-to-point programming is not normally required, but is available to apply the full power of the controller's INFORM language.

### Easy-to-Use

- Users do not have to be experienced programmers to use EasyPallet.
- Patterns are viewable on the robot programming pendant.
- A box editor on the pendant allows box size to be changed quickly and easily as production changes.

### Features

Common robotic palletizing tasks are performed on the DX100 or NX100 teach pendant user interface, including:

- Creating new boxes
- Changing tools
- Adding or subtracting layers
- Changing boxes on each layer
- Changing layer patterns

### Highly Compatible

EasyPallet is compatible with XML databases, which are:

- Created using an open standard
- Easy for people to read and understand
- Easy to edit using freeware and other third-party editors

### ARM YOURSELF...

...with EasyPallet Pendant to make creating palletizing jobs quick and easy.

[www.motoman.com](http://www.motoman.com)