

Yaskawa Motoman... A World of Automation Solutions

Application-Specific Robots and Multiple-Robot Control
Deliver the Highest Productivity in the Robot Industry



Dayton, Ohio: Headquarters

Regional Offices

- Detroit, Michigan
- Los Angeles, California
- Mississauga, Ontario, Canada
- Montreal, Quebec, Canada
- Aguascalientes, Mexico
- Monterrey, Mexico
- São Paulo, Brazil

Why Yaskawa Motoman?

- Over 250,000 robots installed worldwide
- Over 175 unique robot models
- Patented application-specific robot designs to optimize performance and minimize life cycle costs
- Award-winning, patented multiple robot control capability (up to 8 robots with a single pendant)
- Full line of standard, pre-engineered robotic solutions (ArcWorld®, LoadWorld®, etc.) to minimize non-recurring engineering and integration risk
- Ability to deliver turnkey systems through our Automation Group or Motoman Strategic Partners (MSPs)
- Industry-leading simulation and robot cell calibration capability for off-line programming and cloning of robot cells
- 56+ robots dedicated to training. 2:1 student/robot ratio; best in the robotic industry
- IACET-accredited training (more than 75 courses)

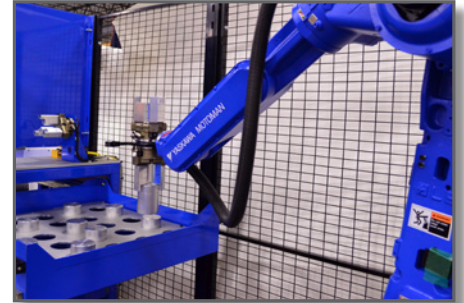
Founded in 1989, Yaskawa Motoman is a wholly owned subsidiary of Yaskawa Electric Corporation, a worldwide leader in mechatronics and robots. Since introducing the first commercially available robot to the industry in 1977, over 250,000 Motoman® robots have been installed worldwide, including 32,000 in North America. Yaskawa produces more robots each year than any other robot company, and even has robots making robots in state-of-the-art manufacturing facilities.

Motoman robots and robotic solutions are hard at work in virtually every industry. Yaskawa Motoman offers both general-purpose and application-specific robots for a wide range of applications, including arc welding, assembly, coating, dispensing, material cutting, material handling, material removal and spot welding. Motoman robots provide unmatched performance (speed and accuracy) and durability – even in extreme environments such as cleanrooms, clinical laboratories, cold rooms and foundries.

Yaskawa Motoman's extensive product line includes over 175 robot models and a full line of fully integrated, pre-engineered "World" solutions that include robots, process equipment and safety devices. Our comprehensive suite of PC-based tools further enhances productivity.

Custom solutions to meet unique automation needs are available through Yaskawa Motoman and our extensive integrator network.

Yaskawa Motoman is committed to providing world-class quality, innovation, and the highest customer satisfaction in the robot industry.



Standard Solutions



Custom Systems



Customer Satisfaction

Yaskawa Motoman's Industry-Leading Innovations

- **1990:** ArcWorld® family – industry's first standard, pre-engineered robot solution
- **1992:** Robot industry's first graphical PC-based expert maintenance software solution: **RobotPro®**; first robot manufacturer to receive **IACET accreditation** for training programs
- **1993:** Robot industry's first graphical PC-based simulation and off-line programming solution: **ROTSY/MotoSim®**; capability to program multiple robots from a single robot controller and now offer **dual, triple (1999) and quadruple (2002) robot control**
- **1996:** First robot manufacturer to offer application-specific interface for simulation and off-line programming of palletizing applications: **Visual Pallet®** and **MotoPallet™**
- **1997:** First robot manufacturer to offer a fully integrated robot calibration solution: **MotoCal®**
- **2000:** First robot manufacturer to offer up to 10-year, complete robot warranty and complete support programs: **LIFE**
- **2001:** Patented alignment-free headstock/tailstock fixture mounting solution: **MotoMount™**
- **2002:** Industry-leading 7-axis solutions for machine tending and large part processing: **MotoRail™** and **MotoSweep™**
- **2003:** Expanded standard pre-engineered "World" solutions with **ArcWorld® IV**
- **2004:** **HyperProductivity®**, overhead-mounted **ArcWorld® V** solutions; 11- and 12-axis robotic beverage dispensing solutions: **RoboBar®**
- **2005:** EPL "**Expert Palletizing**" robots; revolutionary 13-axis dual-arm **DA20** robot; and 7-axis actuator-driven **IA20** robot
- **2006:** EH "**Expert Handling**" robots; EPH "**Expert Press Handling**" robots; and **DIA10** actuator-driven 15-axis dual-arm robot
- **2007:** World's fastest "**Super Speed Arc**" **SSA2000** welding robot; "**Super Speed Flexible**" **SSF2000** handling and general-process robot; **AutoSorter III**; and **SES**, a virtual training package
- **2008:** Next-generation **SDA10** and **SIA20** robots; **EPX "Expert Paint"** robots; **EasyLoad™** machine loading and **EasyPallet™** palletizing software
- **2009:** Gen-7 system level **DX100** controller (up to 8 robots/72 axes); **MPK2** picking robot; **MPK50** packaging robot; **MPL-series** palletizing robots; "Versatile" 7-axis **VA1400** arc welding and **VS50** spot welding robots; "**Master**" **MA-series** arc welding, **MH-series** material handling, **MS-series** spot welding; and **MotoSim EG with VRC** (Virtual Robot Controller)
- **2010:** **PerfectEdge™** robotic finishing solution
- **2011:** **MyMotoman™** remote robot monitoring service; delta-style **MPP3** robot; open software architecture **FS100 controller**

Global Industry Leader

Yaskawa Motoman produces more robots each year than any other robot manufacturer



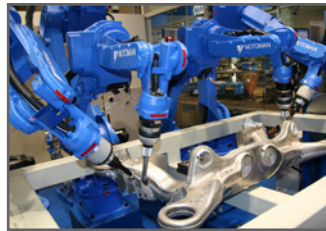
ARC WELDING



MACHINE TENDING



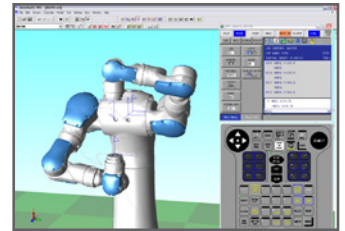
PALLETIZING



MULTIPLE ROBOT CONTROL
(UP TO 8 ROBOTS)



PROCESS-SPECIFIC ROBOT DESIGN



MOTOSIM® EG-VRC SOFTWARE

Applications

- Arc Welding
- Assembly
- Coating
- Dispensing
- Material Cutting
(Laser, Plasma, Waterjet)
- Material Handling
(Picking, Packaging, Palletizing, Die Casting, Machine Tending, Part Transfer, Press Tending and General Handling)
- Material Removal/Finishing
- Spot Welding

Please visit our web site for additional information and register to receive our bi-monthly e-newsletter, Motoman Direct, using the quick link on our home page.

Awards/Achievements

- 2007 Manufacturing Business of the Year; *Dayton Business Journal*
- 2007 Governor's Excellence in Exporting Award; *Ohio Export Division*
- 2007 Eclipse Integrity Award finalist; *Better Business Bureau*
- 2005 Engelberger Award for Leadership; Craig Jennings, Motoman Robotics President and COO (1997-2008)
- 2004 PACE Award Finalist; *Automotive News*
- Platinum Award: Most Innovative New Product; *Robotics World* (2003 International Robot and Vision Show)
- Platinum Award: Best in Show; *Robotics World* (2003 International Robot and Vision Show)
- 2003 Governor's Excellence in Exporting Award; *Ohio Export Division*
- 2003 Manufacturing Business of the Year; *Dayton Business Journal*
- ISO9001:2000 Certification
- ISO 14001 Certification
- First Robot Manufacturer to win the Deming Award for Quality; 1984

www.motoman.com

100 Automation Way
Miamisburg, OH 45342
Tel: 937.847.6200
Fax: 937.847.6277

DS-240-P SEPTEMBER 2012

YASKAWA

MOTOMAN ROBOTICS

MOTOMAN IS A REGISTERED TRADEMARK
ALL OTHER MARKS ARE THE TRADEMARKS AND
REGISTERED TRADEMARKS OF YASKAWA AMERICA, INC.