

## Application Note

---

# **Adding an MP2300Siec Controller as an EtherNet/IP Adapter to Allen Bradley ControlLogix 5555**

---

Applicable Product: MP2300Siec, ControlLogix 5555

Subject: Application Note	Product: MP2300Siec	Doc#: AN.MCD.08.107
Title: Adding an MP2300Siec as an EtherNet/IP Adapter to AllenBradley ControlLogix 5555		

1.	Application Overview .....	3
2.	Application Requirements .....	3
3.	Application Solution and Benefits.....	3
4.	System layout .....	4
5.	Configuring the Scanner (AB ControlLogix 5555) .....	4
6.	Configuring the Adapter (MP2300Siec) .....	14
7.	Communication Verification .....	18

Subject: Application Note	Product: MP2300Siec	Doc#: AN.MCD.08.107
Title: Adding an MP2300Siec as an EtherNet/IP Adapter to AllenBradley ControlLogix 5555		

## 1. Application Overview

This application note illustrates how to add an MP2300Siec motion controller as an EtherNet/IP Adapter (Generic EIP Device) to Allen Bradley's ControlLogix 5555 using RSLogix 5000 PLC application software and MotionWorksIEC. Additionally, a detailed description of how to create, link and verify communication via I/O variables is provided.

## 2. Application Requirements

The requirements for this application note include using the MP2300Siec motion controller as an EIP Adapter (Slave) device to talk to and exchange data with an Allen Bradley ControlLogix PLC Scanner (Master). The example explained in this note describes an implicit I/O message connection between the MP2300Siec and the AB PLC. No function blocks or PLC logic is necessary, since the data connection is open once the Assembly instances are correctly configured.

Components:

- MP2300Siec Controller
- AB RSLogix5000© version 13.0
- AB ControlLogix 5555 1756-L55 B Series PLC with CPU and Ethernet/IP Module (revision 13.27)

## 3. Application Solution and Benefits

- This configuration will allow the user to exchange data between the Allen Bradley ControlLogix 5555 PLC and the MP2300Siec Motion Controller using EtherNet/IP as the protocol.
- Both Input and Output data tags are supported.

Subject: Application Note	Product: MP2300Siec	Doc#: AN.MCD.08.107
Title: Adding an MP2300Siec as an EtherNet/IP Adapter to AllenBradley ControlLogix 5555		

#### 4. System layout

Figure 1 details the goal of this project

**Yaskawa MP2300Siec**

**AB ControlLogix 5555**

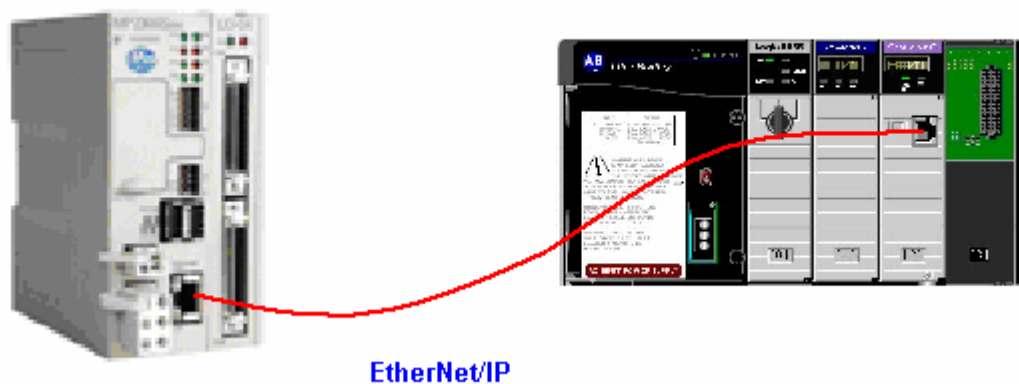


Figure 1: System Layout

#### 5. Configuring the Scanner (AB ControlLogix 5555)

This document explains configuration of the EtherNet/IP Module and the EtherNet/IP Assembly instances on both the MP2300Siec device (Adapter) and the AB PLC device (Scanner).

In RSLogix 5000, start a new project. Enter the controller details as shown in Figure 2

Subject: Application Note	Product: MP2300Siec	Doc#: AN.MCD.08.107
Title: Adding an MP2300Siec as an EtherNet/IP Adapter to AllenBradley ControlLogix 5555		

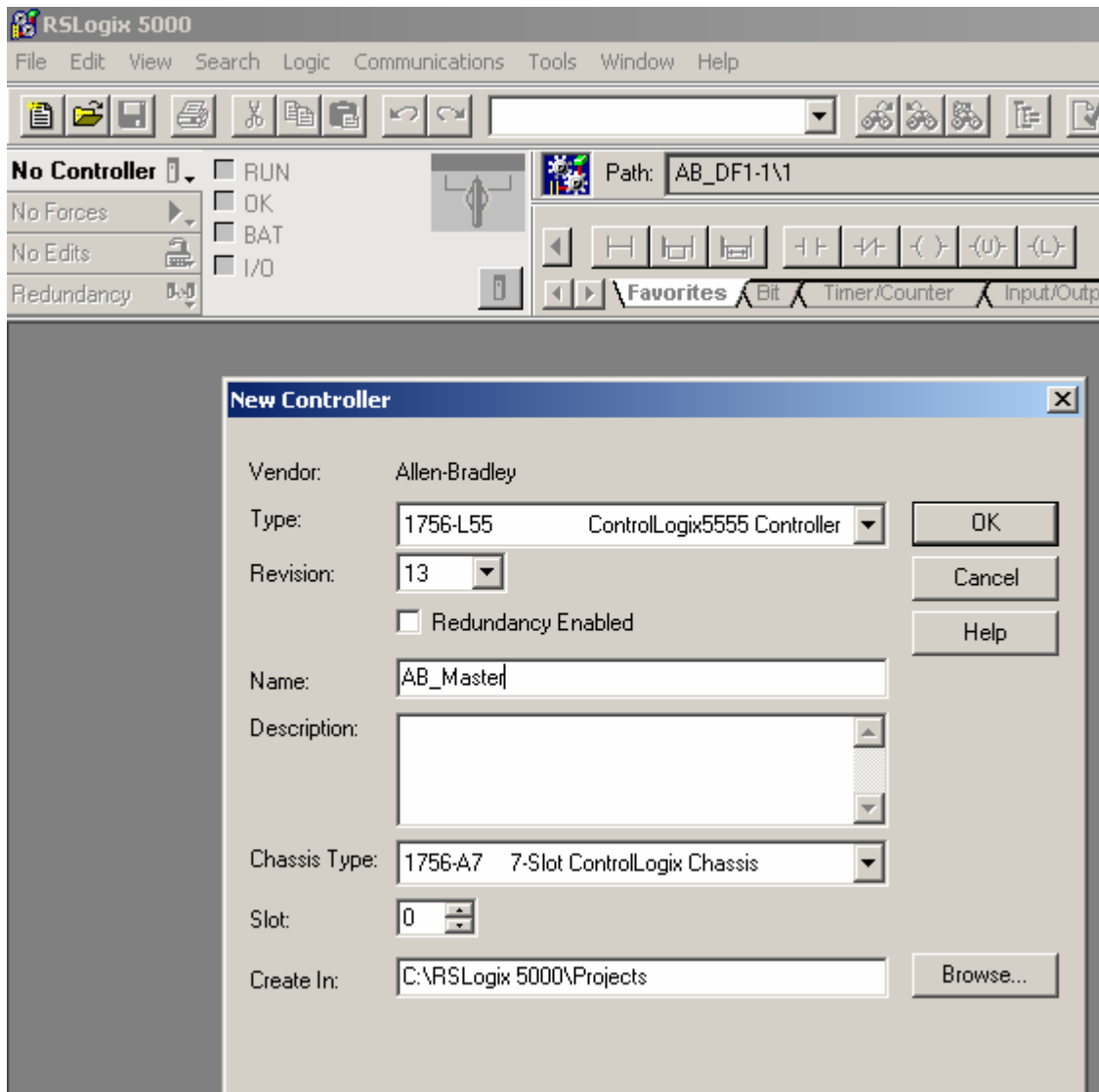


Figure 2: Starting a new project

The next step is to add the MP2300Siec as a Generic EIP device by adding an Ethernet Bridge to the I/O Configuration. Right-Click on the I/O Configuration > Click 'New Module':

Subject: Application Note	Product: MP2300Siec	Doc#: AN.MCD.08.107
Title: Adding an MP2300Siec as an EtherNet/IP Adapter to AllenBradley ControlLogix 5555		

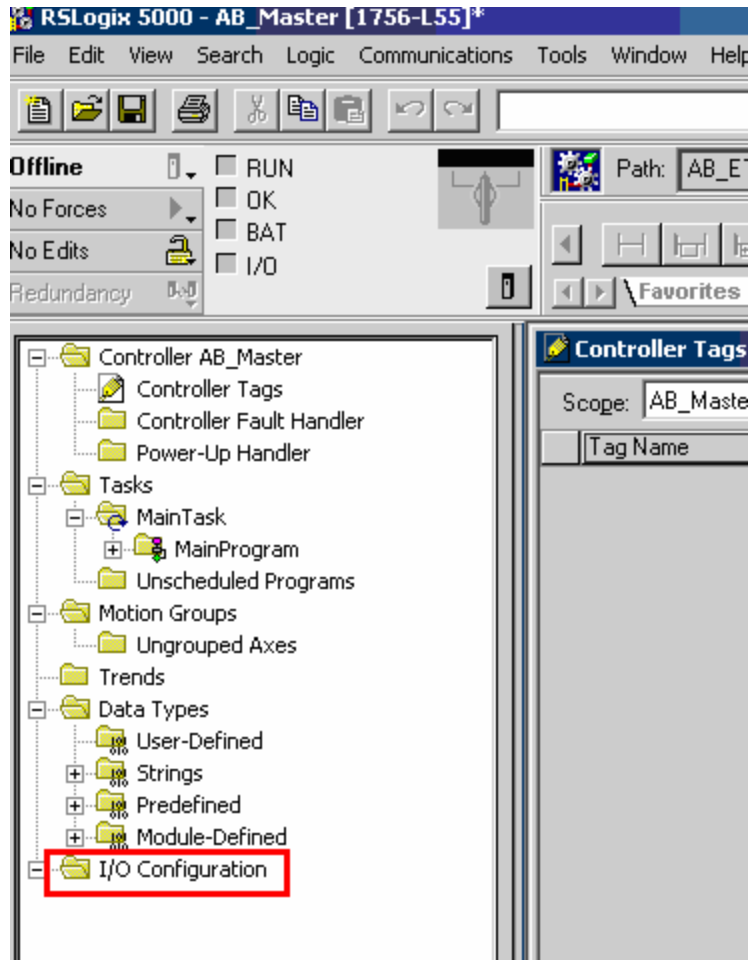


Figure 3: Adding an Ethernet bridge

Select the 1756 10/100 Mbps Ethernet Bridge, Twisted-Pair Media as shown in Figure 4.

Subject: Application Note	Product: MP2300Siec	Doc#: AN.MCD.08.107
Title: Adding an MP2300Siec as an EtherNet/IP Adapter to AllenBradley ControlLogix 5555		

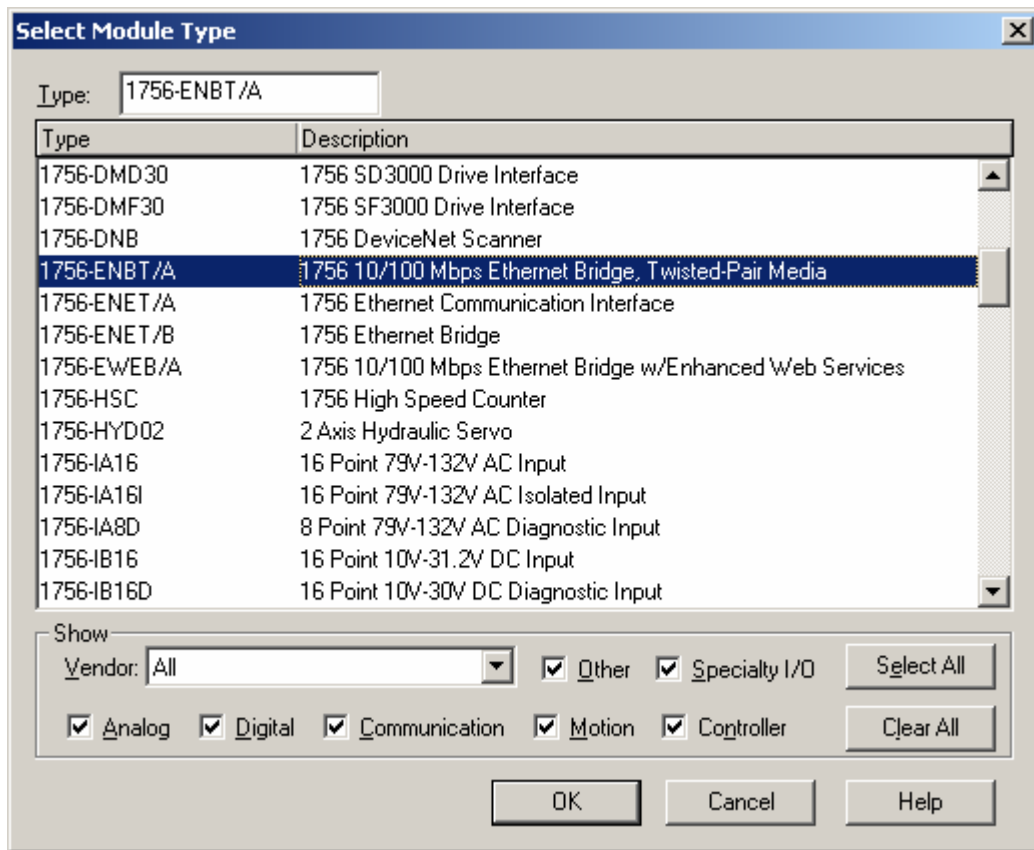


Figure 4: Selecting the Ethernet bridge type

Next, we configure the EtherNet/IP Module (Figure 5). Note: The IP address in this case is the IP address of the EtherNet/IP Module. Click on the '1756-ENBT/A *DeviceName*' node in the I/O Configuration section > Right-click the node and select 'Properties' to get the properties dialog (Figure 5)

Subject: Application Note

Product: MP2300Siec

Doc#: AN.MCD.08.107

Title: Adding an MP2300Siec as an EtherNet/IP Adapter to AllenBradley ControlLogix 5555

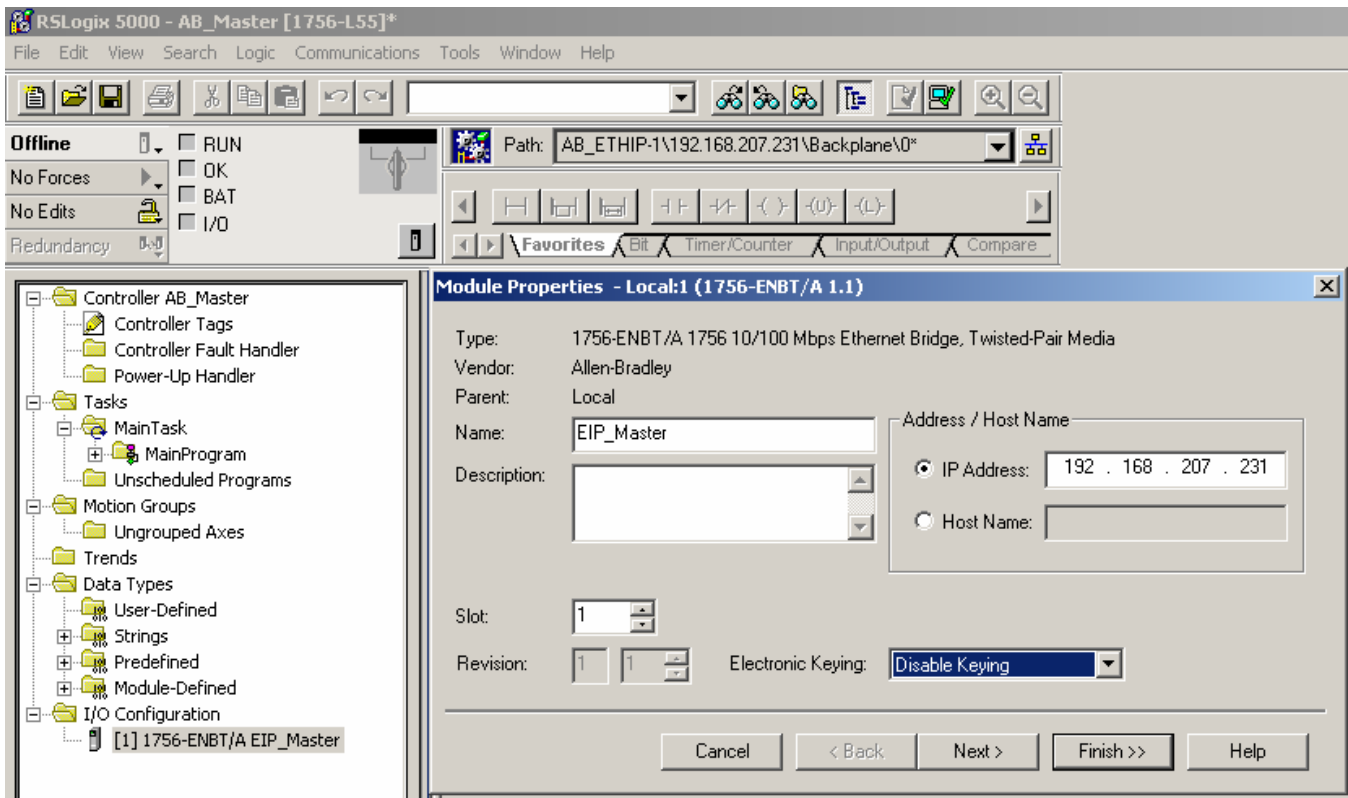


Figure 5: Setting general properties for the EtherNet/IP module on the Scanner

If you need to do any additional port configuration, click-on the 'Port Configuration' tab in the dialog window.

Next, the MP2300Siec needs to be added as a Generic EIP device. Right Click on EIP Bridge node ([1] 1756-ENBT/A 'Device Name') under I/O Configuration > Click on 'New Module', and select the following from the 'Select Module Type' dialog:



Subject: Application Note	Product: MP2300Siec	Doc#: AN.MCD.08.107
Title: Adding an MP2300Siec as an EtherNet/IP Adapter to AllenBradley ControlLogix 5555		

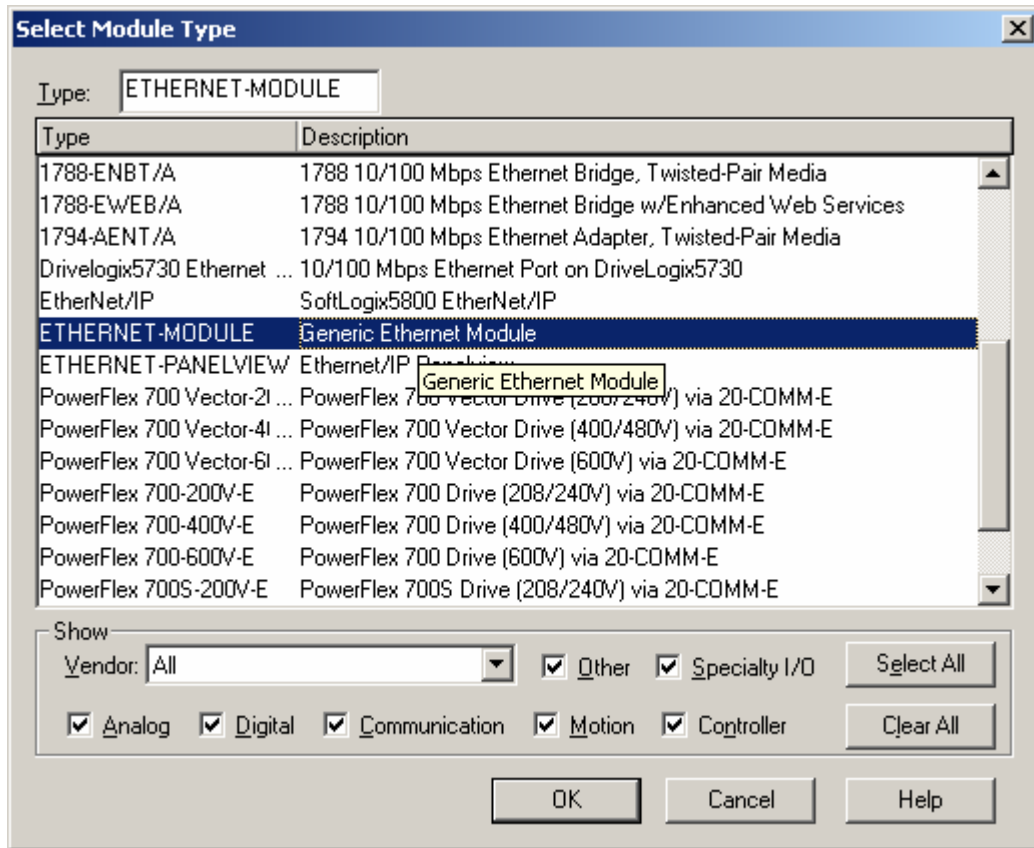


Figure 6: Selecting the adapter module type

Right Click on the newly created ETHERNER-MODULE and edit the properties as shown in Figure 7

Subject: Application Note	Product: MP2300Siec	Doc#: AN.MCD.08.107
Title: Adding an MP2300Siec as an EtherNet/IP Adapter to AllenBradley ControlLogix 5555		

The following dialog should be displayed to configure the MP2300Siec EIP Adapter:

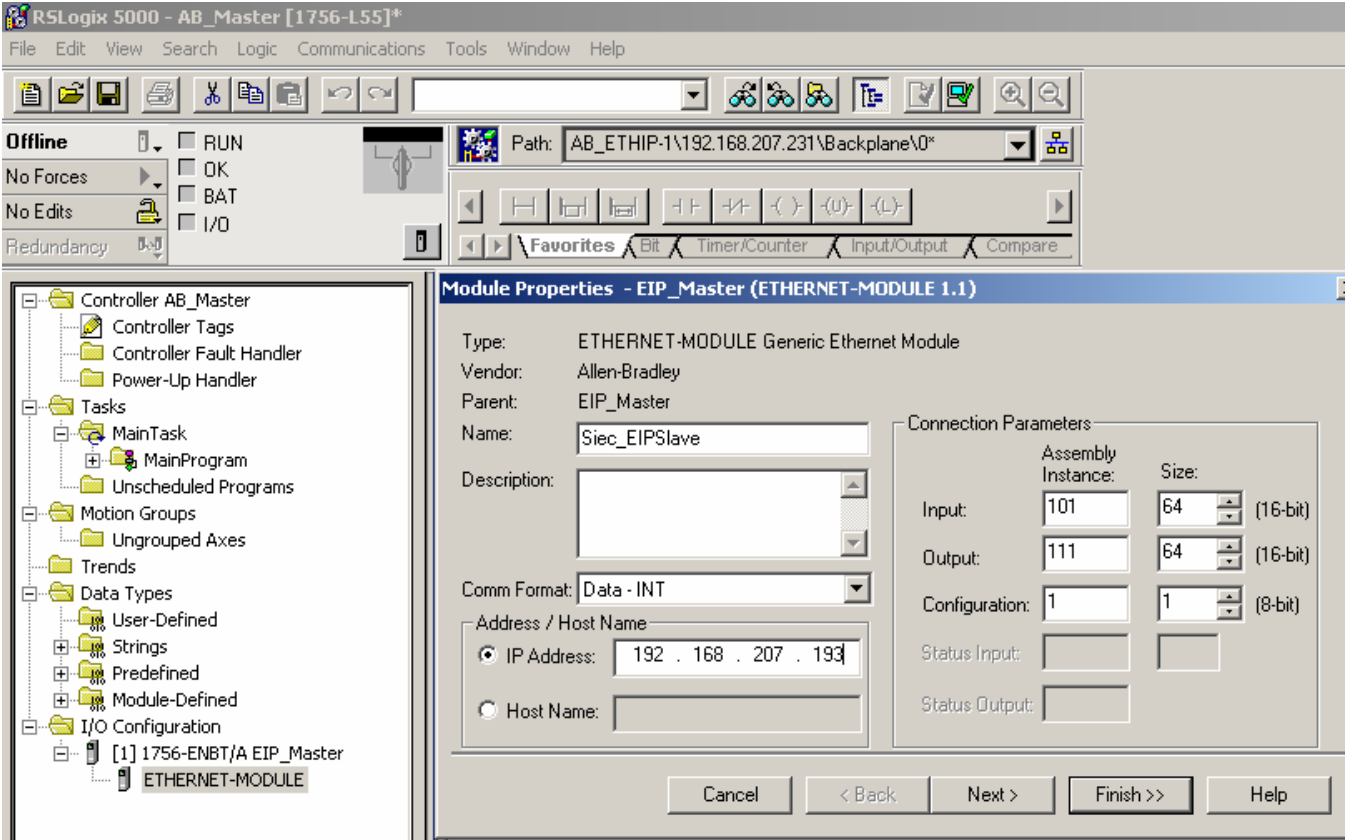


Figure 7: Ethernet Module (adapter) properties

Notes about the Generic Ethernet Device Properties:

1. IP Address is the EIP Adapter.
2. Assembly Instances are referenced to the Master, meaning Input in this context is input to the Scanner (Master), output to the Adapter (Slave).

Subject: Application Note	Product: MP2300Siec	Doc#: AN.MCD.08.107
Title: Adding an MP2300Siec as an EtherNet/IP Adapter to AllenBradley ControlLogix 5555		

**Note: Special attention needs to be paid to the assembly instances and their sizes. If the sizes are not compatible, an error in communication will result. In this case sixty four sixteen bit registers make up the 128 bytes that instances 101 and 111 are made up of. This is compatible with the 128 eight bit registers on the MP2300Siec side.**

3. Configuration is not used on the MP2300Siec controller. Therefore, this can be set to Assembly Instance #1, Size 1 since the assembly number can not be left blank.

Finally, configure the RPI (Requested Packet Interval) on the Master to dictate the polling rate to which the Master will update new packet information from the Slave. **The minimum value for the MP2300Siec is 10ms.** Click on the 'Connection' tab in the Module Properties dialog

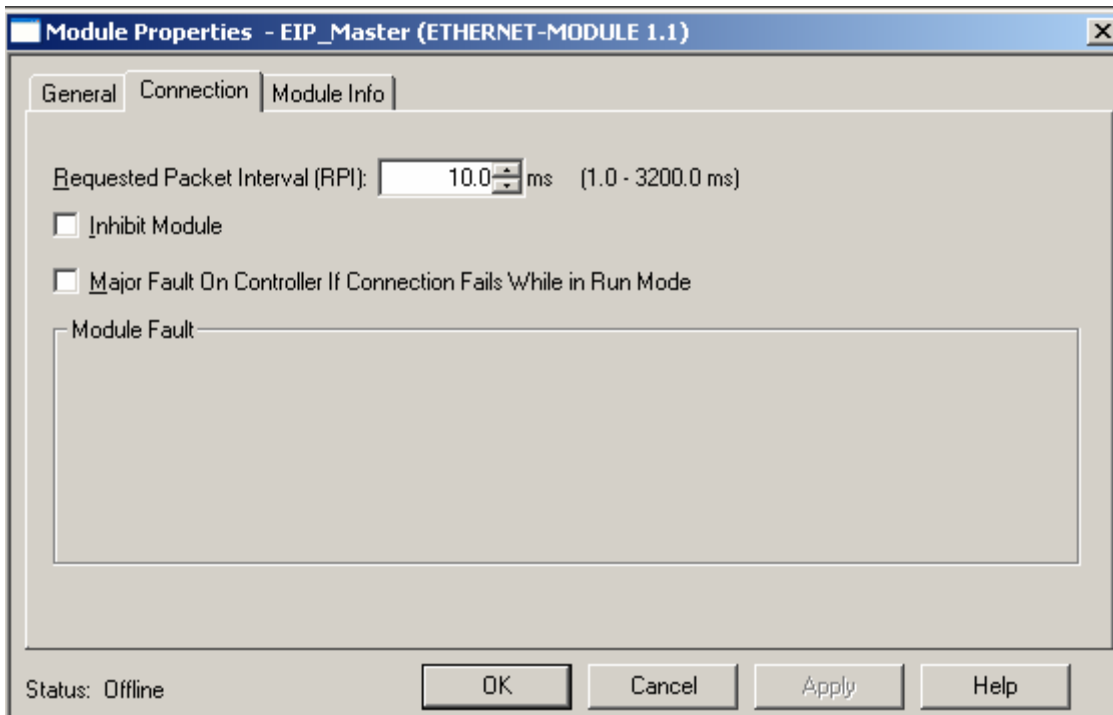


Figure 8: RPI properties

Subject: Application Note	Product: MP2300Siec	Doc#: AN.MCD.08.107
Title: Adding an MP2300Siec as an EtherNet/IP Adapter to AllenBradley ControlLogix 5555		

Verify the created project by clicking on the verify button as shown in Figure 9.

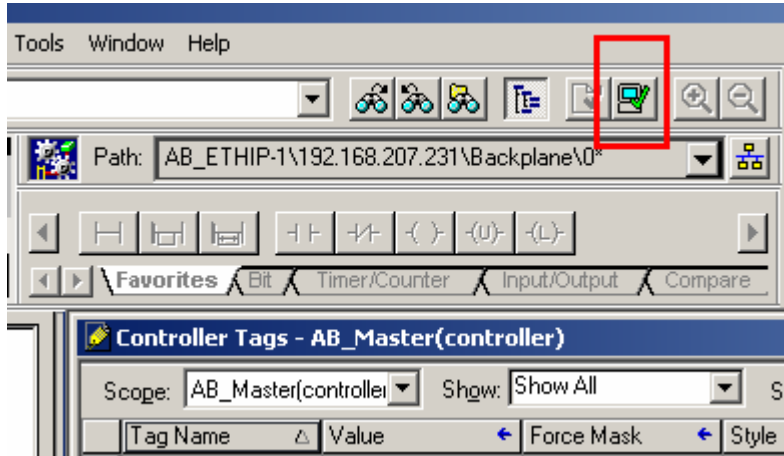


Figure 9: Verify

Download the project to the controller by verifying the path to download. Communications > Who Active

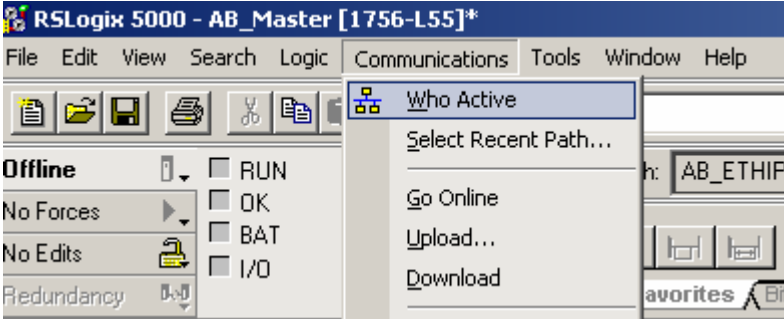


Figure 10: Verify path for download

Select the controller to which this project is going to be downloaded and click download as in Figure 11.

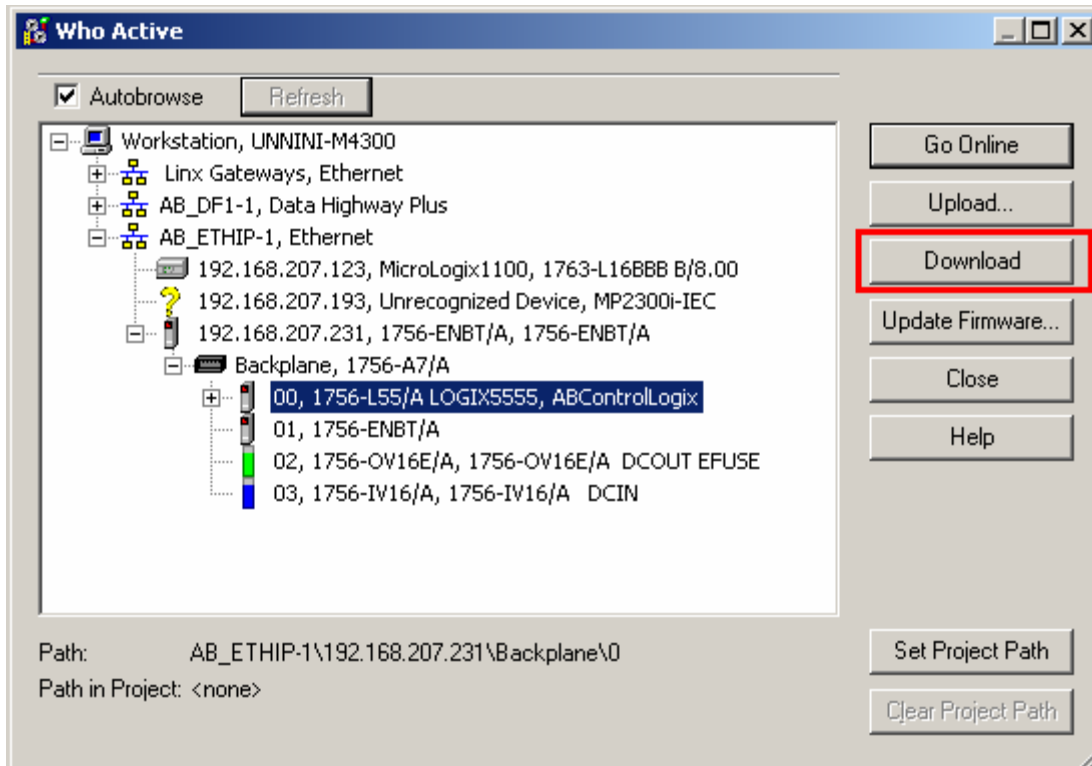


Figure 11: Download to ControlLogix

Once downloaded, go online.

At this point, the scanner device (AB PLC) is configured to talk with the MP2300Siec as an adapter. Additionally, the RSLogix 5000 software automatically adds the words configured for the EIP module. These can be located in the 'Controller Tags' node under the 'Controller' node in the project tree:

Subject: Application Note	Product: MP2300Siec	Doc#: AN.MCD.08.107
Title: Adding an MP2300Siec as an EtherNet/IP Adapter to AllenBradley ControlLogix 5555		

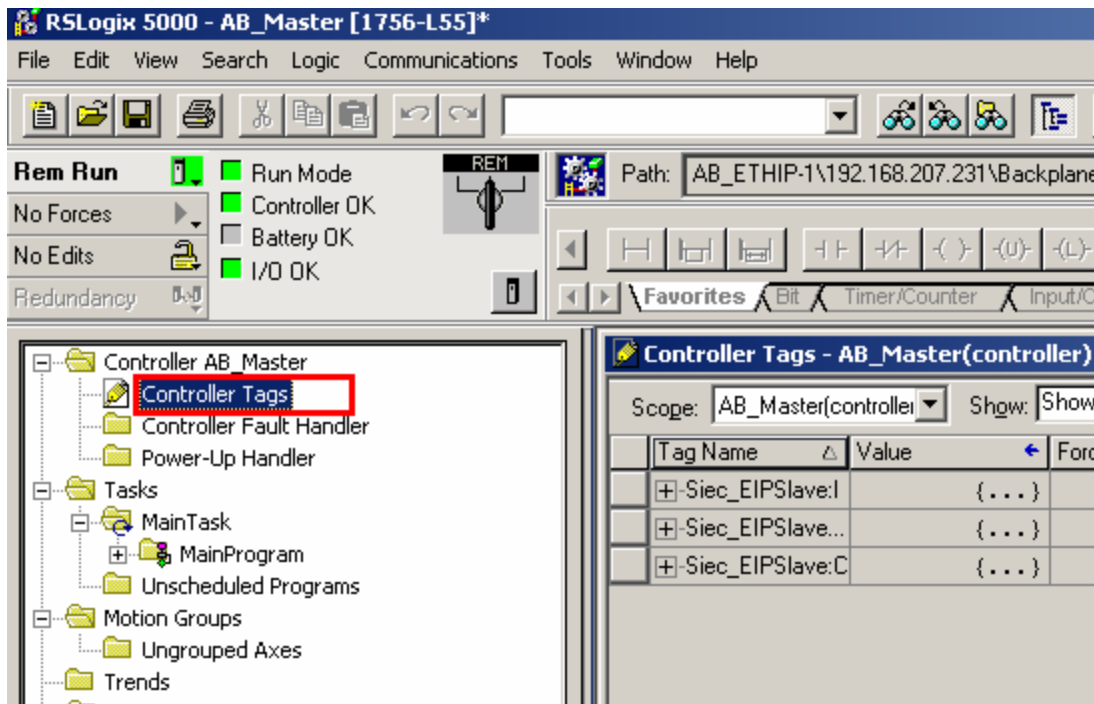


Figure 12: Controller tags for I/O variables

## 6. Configuring the Adapter (MP2300Siec)

The next steps illustrate how to create a project in MotionWorks IEC and add I/O variables to talk with the AB PLC.

Since Assembly Instances #101 (Scanner Inputs) and #111 (Scanner Outputs) were configured on the scanner device, the next task is to implement the data exchange between the scanner and the adapter. To do this, we need to add I/O variables using the pre-defined address ranges as specified in the MP2300Siec Project Template.

Subject: Application Note	Product: MP2300Siec	Doc#: AN.MCD.08.107
Title: Adding an MP2300Siec as an EtherNet/IP Adapter to AllenBradley ControlLogix 5555		

This is the template that opens when a user chooses to open a new project in MotionWorksIEC as shown in Figure 13.

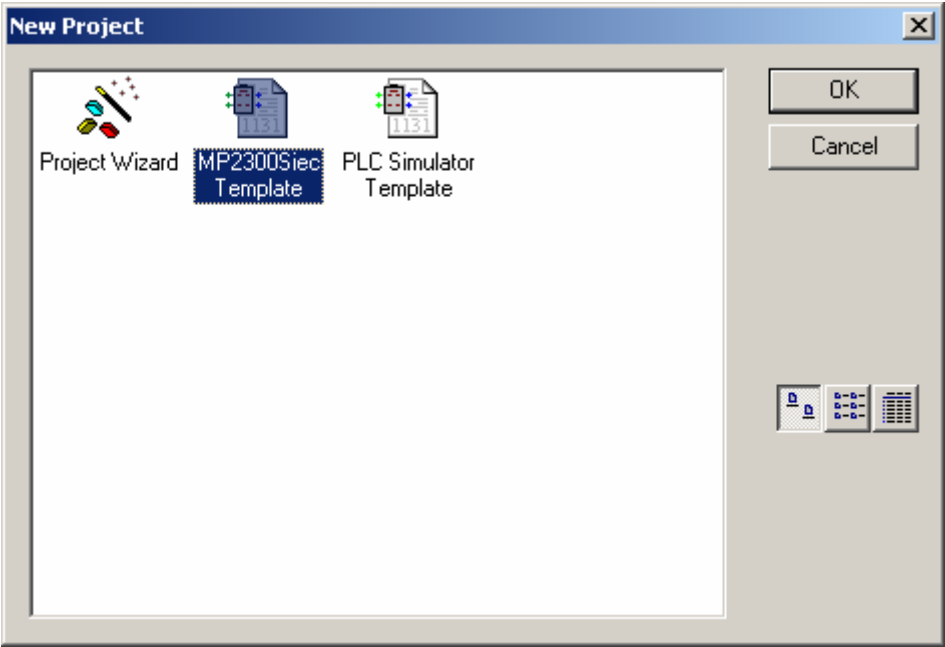


Figure 13: New project in MotionWorksIEC

After the new Project is created, select the 'Global\_Variables' tab in the Project Tree

Subject: Application Note	Product: MP2300Siec	Doc#: AN.MCD.08.107
Title: Adding an MP2300Siec as an EtherNet/IP Adapter to AllenBradley ControlLogix 5555		

Name	Type	Usage	Description	Address	Ir
+ System					
- EIP Input Instance #111, Qty: 128 Bytes, Address Range: %IB0 - %IB127					
FromControl1	INT	VAR_GLOBAL		%MWO	
- EIP Input Instance #112, Qty: 256 Bytes, Address Range: %IB128 - %IB383					
- EIP Input Instance #113, Qty: 128 Bytes, Address Range: %IB384 - %IB511					
- EIP Input Instance #114, Qty: 256 Bytes, Address Range: %IB512 - %QI767					
- EIP Input Instance #115, Qty: 128 Bytes, Address Range: %IB768 - %IB895					
- EIP Input Instance #116, Qty: 256 Bytes, Address Range: %IB896 - %IB1151					
- EIP Output Instance #101, Qty: 128 Bytes, Address Range: %QB0 - %QB127					
ToControl1	INT	VAR_GLOBAL		%QWO	
- EIP Output Instance #102, Qty: 256 Bytes, Address Range: %QB128 - %QB383					
- EIP Output Instance #103, Qty: 128 Bytes, Address Range: %QB384 - %QB511					
- EIP Output Instance #104, Qty: 256 Bytes, Address Range: %QB512 - %QB767					
- EIP Output Instance #105, Qty: 128 Bytes, Address Range: %QB768 - %QB895					
- EIP Output Instance #106, Qty: 256 Bytes, Address Range: %QB896 - %QB1151					
- Modbus FC#02 Qty: 128 Inputs, Address Range: %QX1152.0 - %QX1167.7					
- Modbus FC#04 Qty: 1024 Registers, Address Range: %QB1168 - %QB3215					
- Modbus FC#05 Qty: 128 Coils, Address Range: %IX1152.0 - %IX1167.7					
- Modbus FC#06,16 Qty: 1024 Registers, Address Range: %IB1168 - %IB3215					
+ <LIO-01> - Module - 1 (* Modify Variable Names, Not Group Name!! *)					

Figure 14: Global Variable list

Start adding I/O variables to the Global Variables table. In this example, we will adding (1) input WORD (16bit) variable and (1) output WORD variable. A new variable can be created by right clicking on the grey input or output instance group name and choosing so.

Next, we assign each variable an address based on the variable group description range. Note: Addressing in the MotionWorks IEC project is based on byte offset; i.e. %QW0 = Word 0, %QW1 = Word 1, etc.



Subject: Application Note	Product: MP2300Siec	Doc#: AN.MCD.08.107
Title: Adding an MP2300Siec as an EtherNet/IP Adapter to AllenBradley ControlLogix 5555		

The exercise carried out in this test project is as follows

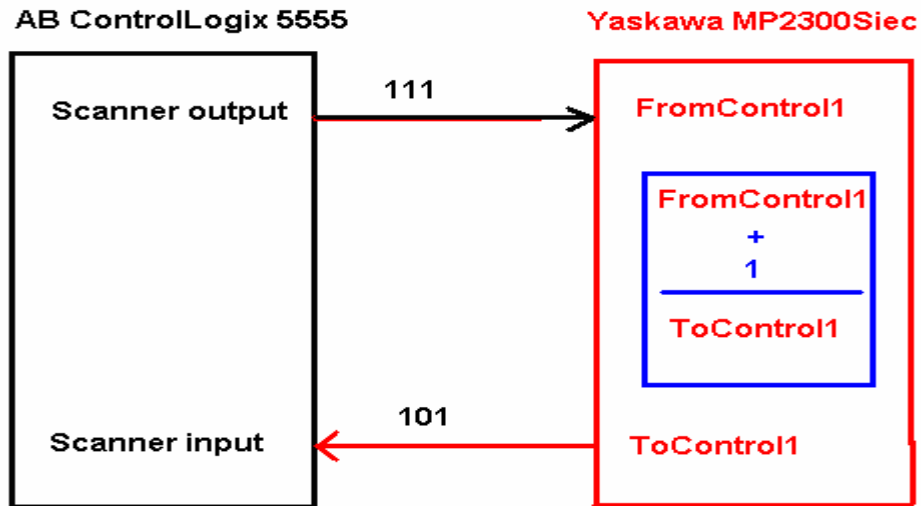


Figure 15: Test exercise

Create the following logic on the slave MP2300Siec controller. Download the program and run the controller.

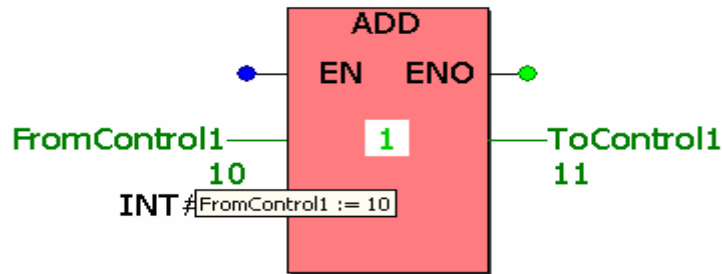


Figure 16: Logic on the MP2300Siec

Subject: Application Note	Product: MP2300Siec	Doc#: AN.MCD.08.107
Title: Adding an MP2300Siec as an EtherNet/IP Adapter to AllenBradley ControlLogix 5555		

## 7. Communication Verification

After both devices and variables are configured, each program can be run and tested using the debuggers on both the Master and Slave devices.

Enter an integer in the scanner output variable

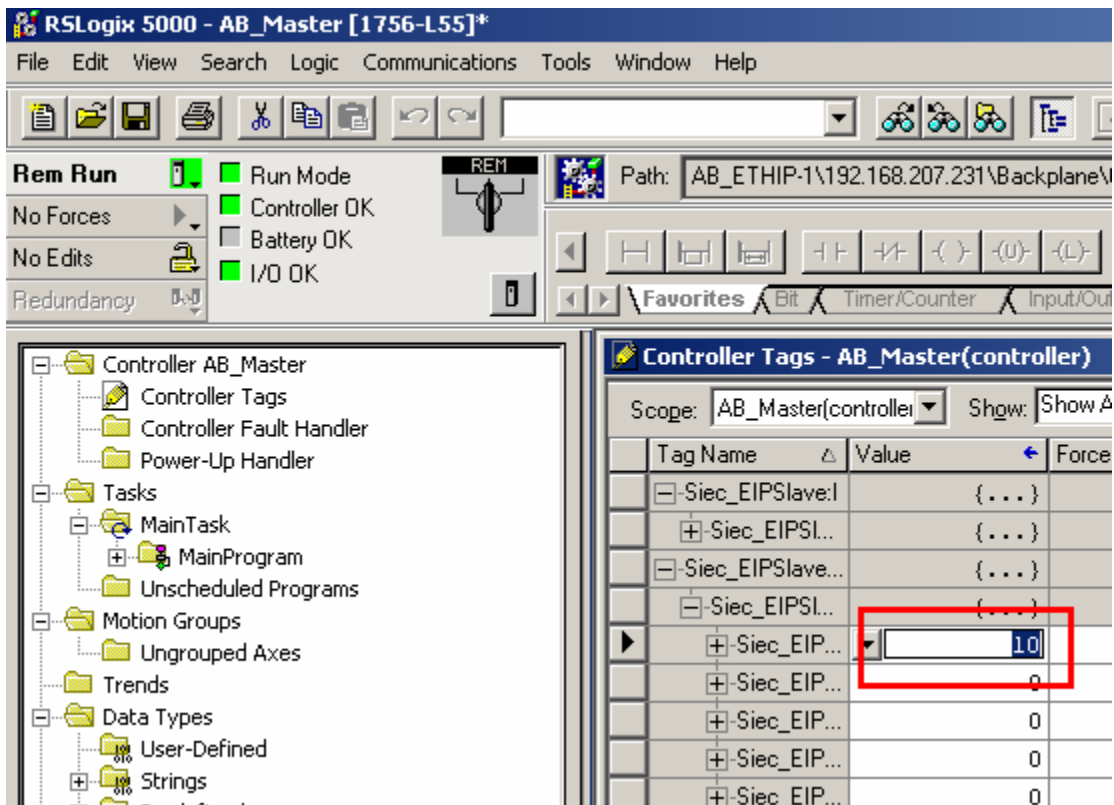


Figure 17: Scanner output variable

Subject: Application Note	Product: MP2300Siec	Doc#: AN.MCD.08.107
Title: Adding an MP2300Siec as an EtherNet/IP Adapter to AllenBradley ControlLogix 5555		

The corresponding scanner input variable will have the value of the scanner output variable incremented by one. This addition took place in the MP2300Siec controller.

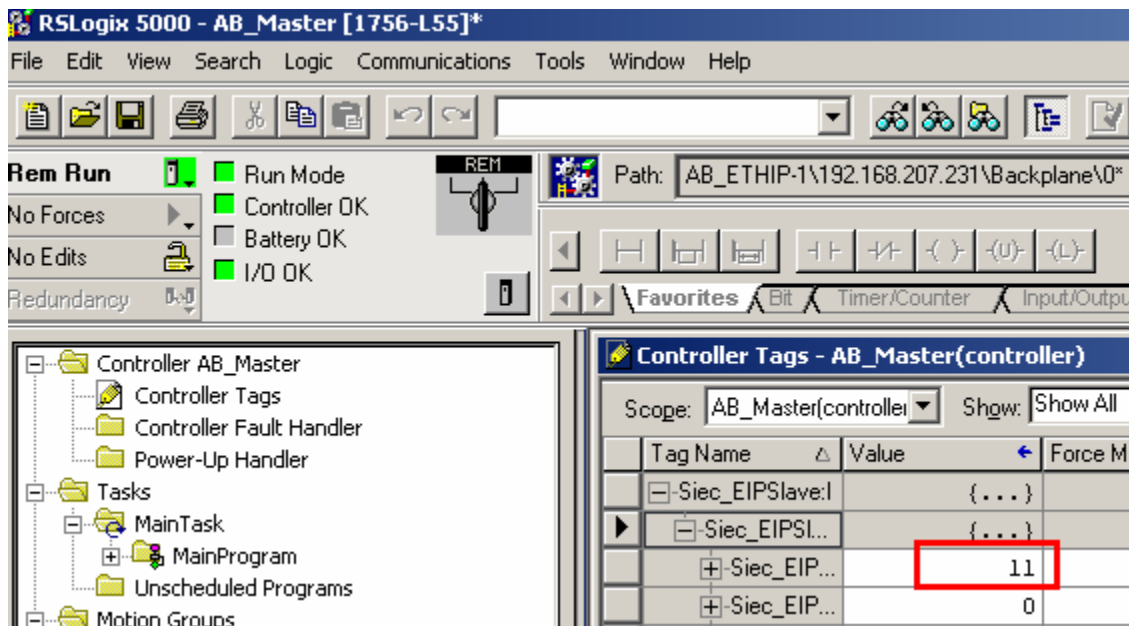


Figure 18: Scanner input variable

To verify the AB PLC has connected correctly to the MP2300Siec controller and the configured Assembly Instances are functioning properly, there is a dialog in RSLogix that displays the status as shown in Figure 19.

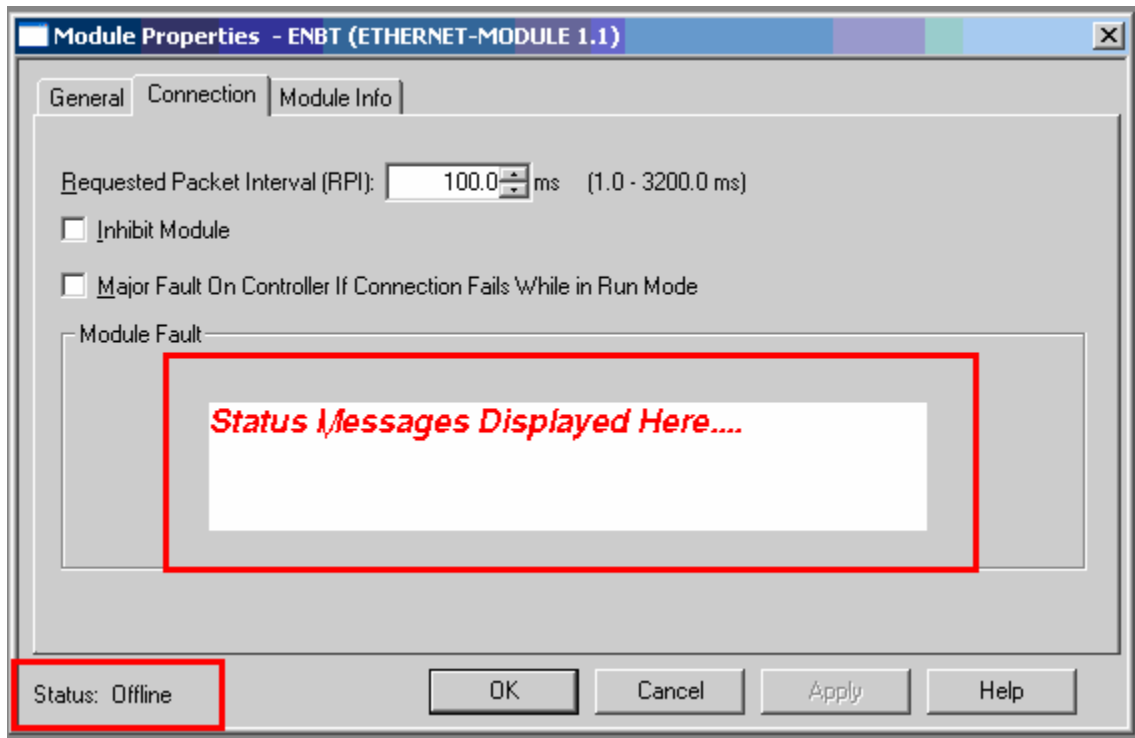


Figure 19: Communication status display