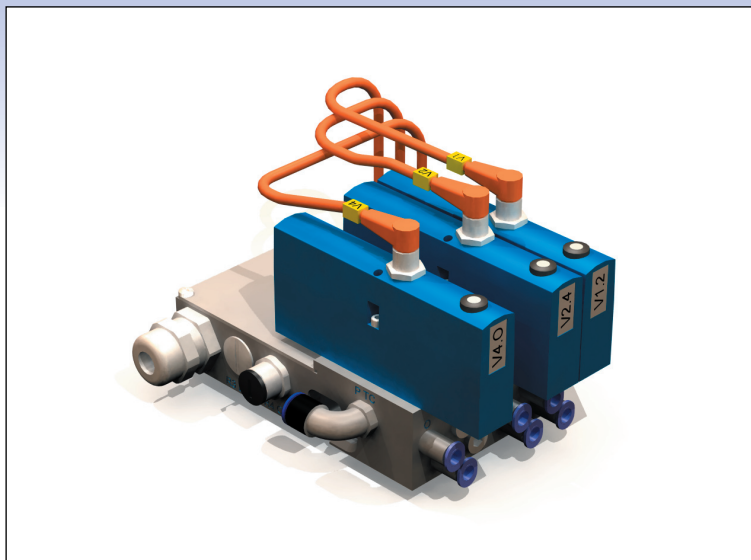


# Small Valve units



## Valve units

The combined valve units will simplify the installation of control equipment on the robot arm. The compact design with valves and electrical connection box combined into one unit makes it easy to install and connect the application controls. The tool changing valve supplies air flow to the other valves which simplifies the programming of the robot. For fast and problem free installations the RSP valve unit is the first choice for many system integrators.

## Advantages:

- Compact design
- Easy to install
- Easy to expand
- Proven technology
- High safety

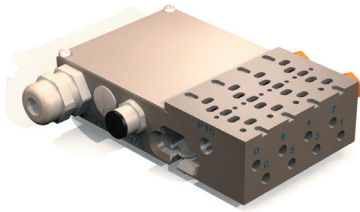
## Technical data

Max air pressure	8 bar
Max air flow	800 l/min
Valve type	Mono stable
Mounting plate	Std. ISO 01 (26mm)

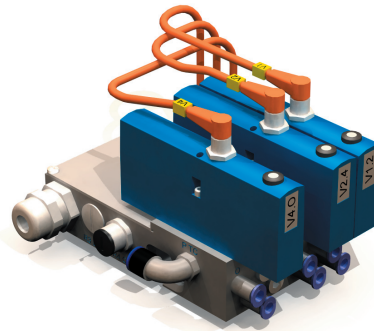
## Technical spec

Part no.	P0010	P0011	P0012	P0013
Valves	-	3	1	3
Air chanel	-	6	2	6
TC function	-	Yes	No	No

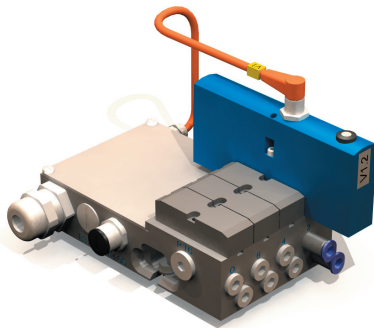
P0010:



P0011:



P0012:



P0013:

