

Product catalog

Spot welding 2013





Robot System Products® has been the industry leader in high-performance robotic peripheral products for over 30 years. Our aim is to provide the highest quality, most reliable and affordable robot tooling products on the market. And our commitment to outstanding customer service and strong retailer partnerships is unparalleled.

Robot System Products constantly explores emerging technologies to market robotic peripherals that combine leading edge design with performance innovation for production with robots 24 hour per day, 7 days a week, and 365 days a year. It is this dedication that has made RSP one of the most recognized and reputable robot peripheral product brand in the world.

Robot System Products has a wide range of standard robot peripheral products:

- Tool changers
- Swivels
- Swivels with tool changer
- Grippers
- Hose packages
- Valve units
- Complete function package
- Vacuum gripping tools
- Deburring tool system

RSP products are available for all major robot brands and come with complete documentation. 3D-models for computer simulation are available for download at www.robotsystemproducts.com.



The information in this document is subject to change without prior notice and should not be regarded as an undertaking from Robot System Products AB. Robot System Products AB assumes no responsibility for errors that may occur in this document.

Robot System Products AB bears no responsibility for damage that is incurred by the use of this document, or the software or hardware described in this document.

The document, or parts of it, may not be reproduced or copied without prior permission from Robot System Products AB. It may neither be imparted to a third party, nor otherwise be used without authorization. Infringement hereof will be subject to action in accordance with the applicable laws.

Further copies of this document can be obtained from Robot System Products AB at current prices.

® © Robot System Products AB

Article number: M0801-1 R1

Robot System Products AB

Isolatorvägen 4

SE-721 37 Västerås

Sweden

www.robotsystemproducts.com

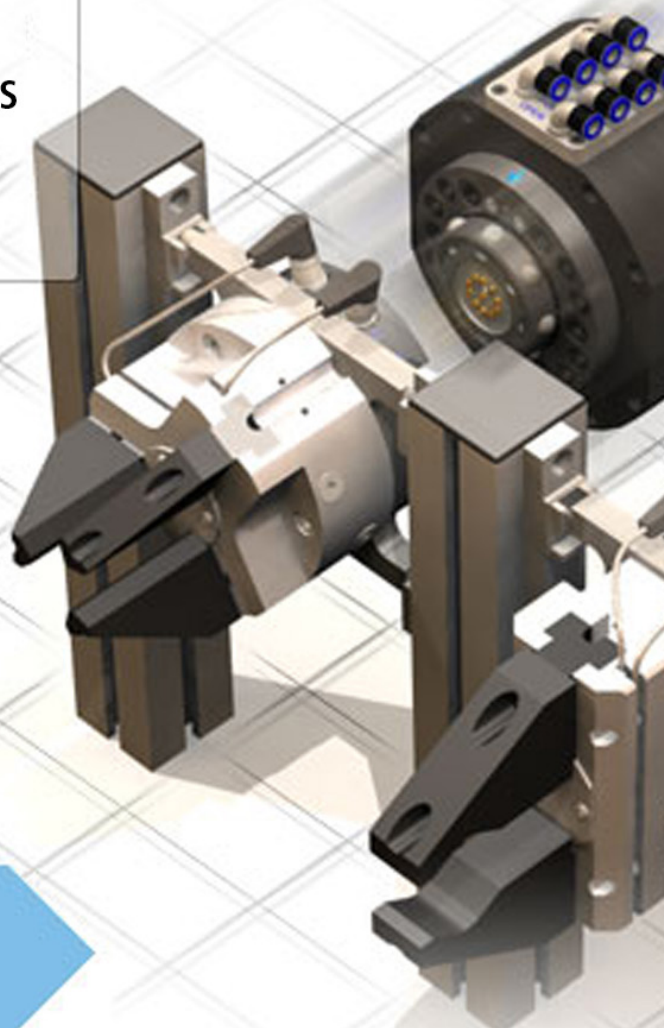
Phone: +46 (0)21 81 66 00

Fax: +46 (0)21 81 66 01

**COMPLETE TOOL SYSTEMS
FOR YOUR ROBOT**

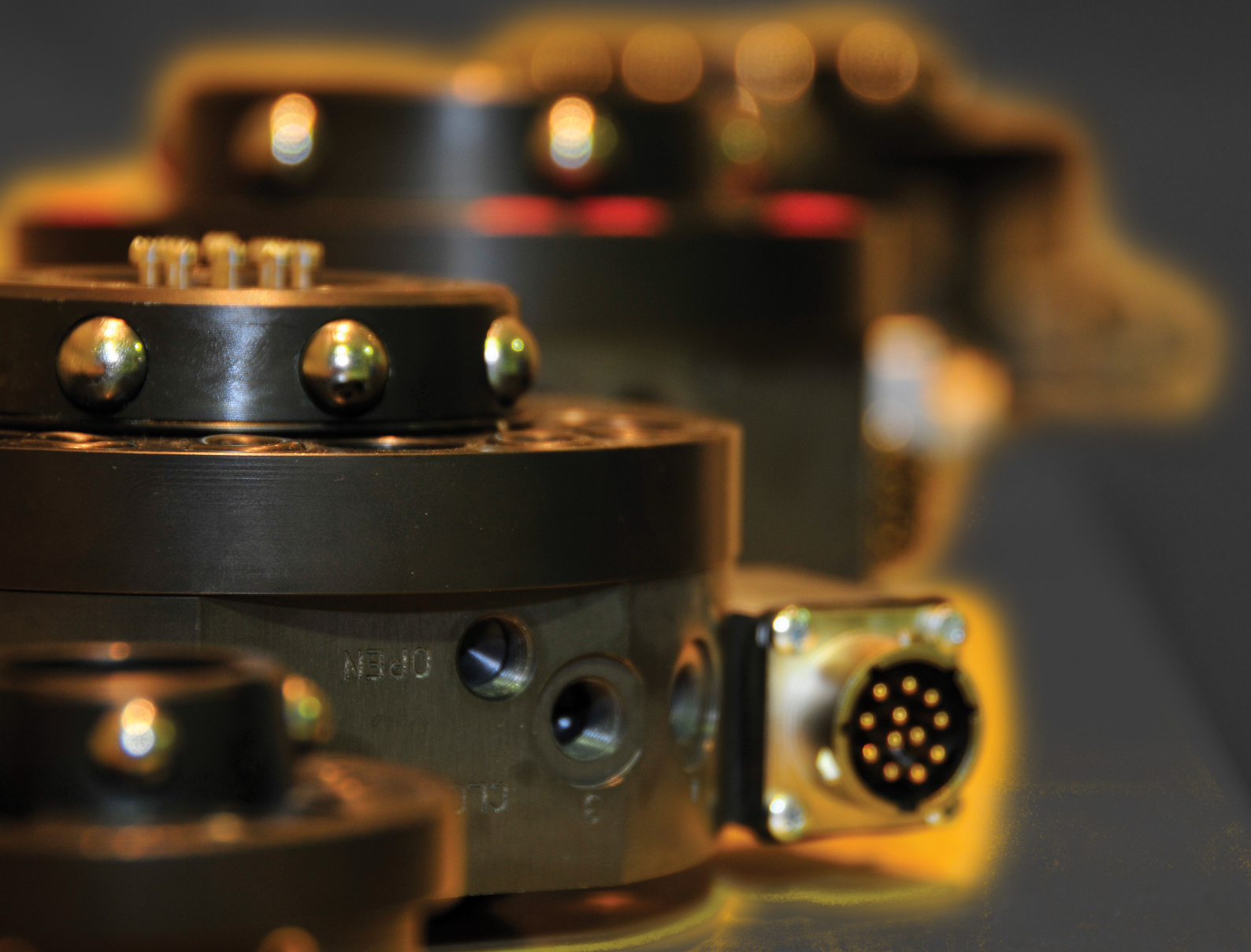


**Locked by
TrueConnect™**



CONTENTS

TOOL CHANGERS AND TOOL ATTACHMENTS	6
TC/TA240	8
TC/TA275	12
TC/TA350	16
TC/TA480	22
TC/TA500	26
TC/TA1000	30
SWIVELS WITH TOOL CHANGERS AND TOOL ATTACHMENTS	34
STC/TA250	36
STC/TA350	38
SWIVELS	44
S250	46
S350	48
OPTIONS	50
Adaptation kits for tool changers	52
Adaptation kits for swivels and swivels with tool changers	53
Options for tool changers, swivels with tool changers and swivels	54
HOW TO ORDER	56

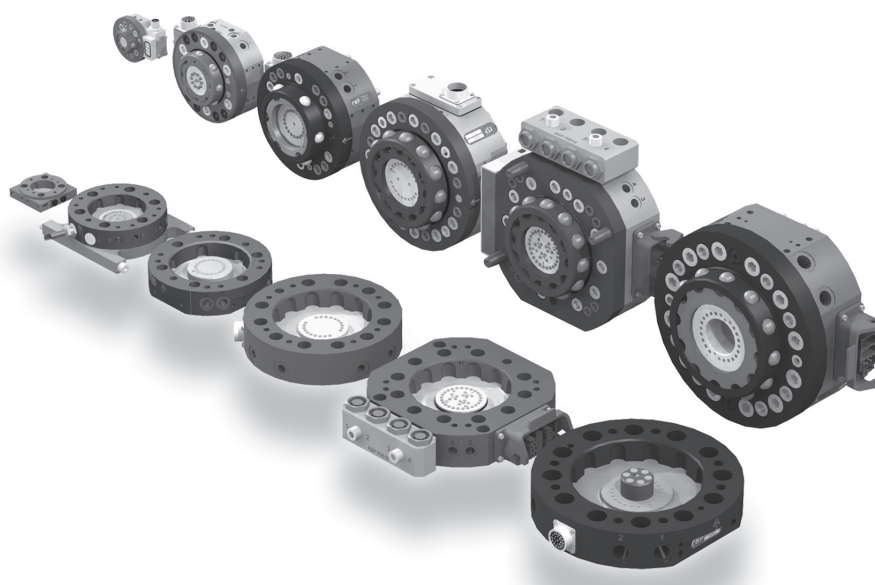


Tool changers and tool attachments

Tool changers

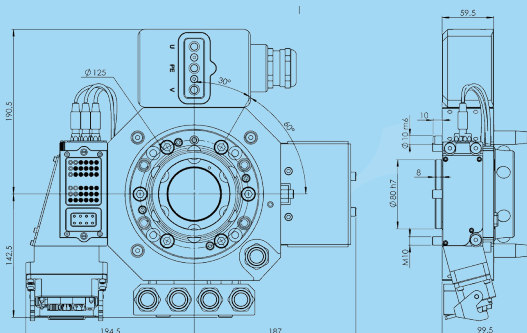
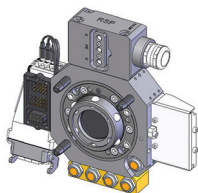
The new generation tool changer gives maximum flexibility to the robot. With low weight, compact and robust design and high safety they function continuously on a daily basis changing your tools. The patented locking device TrueConnect™ has a unique design, that doesn't require exact positioning when docking with different tools. The locking device lines up the electrical connector pins automatically to decrease wear and increase lifetime. TrueConnect™ provides absolute position repeatability and is the fastest and most durable tool changer on the market.

- Fast docking < 20mm docking stroke
- Forgiving locking device lines up automatically
- Robust design for high torque applications
- Low maintenance
- 3D models for Robot CAD systems

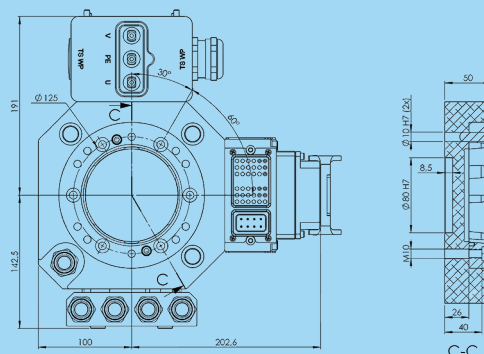
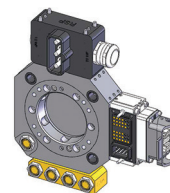


Spot welding tool changers and tool attachments for pneumatic gun

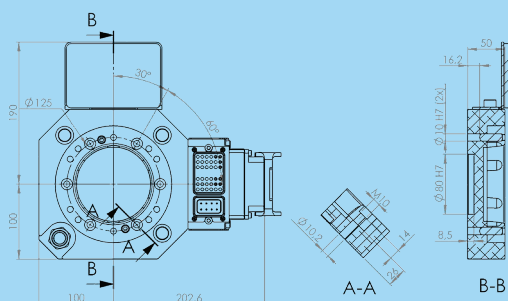
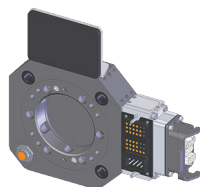
P6705
Tool changer TC240-SWP



P6707
Gun attachment TA240-SWP



P6709
Tool attachment TA240-SW/
MH

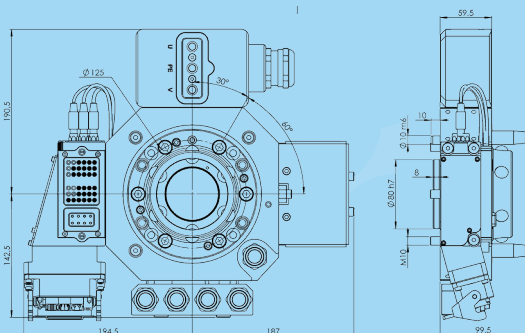
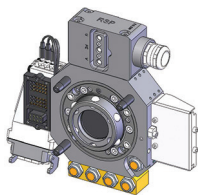


TC/TA240

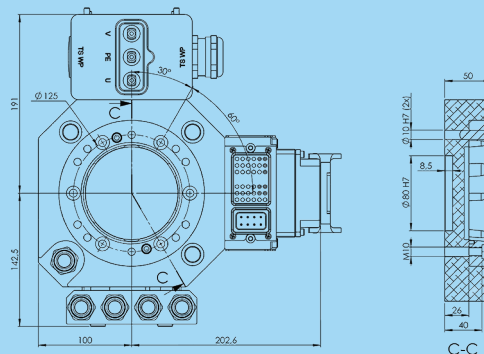
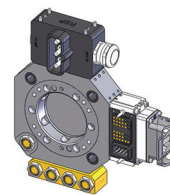
Type	TC240-SWP	TA240-SWP	TA240-SW/MH
Article number	P6705	P6707	P6709
Weight (kg)	13.4	8.8	6
Mechanical interface	ISO 9409-1 125-6-M10 (center tap both Ø63 and Ø80)		
Working temperature	+10°C - +60°C		
IP classification	IP54		
	Maximum tool load		
Fz	± 2750 N		
Mz	± 1790 Nm		
Mx/My	± 1790 Nm		
	Air ducts without automatic shut off function		
Number of air ducts	5		
Dedicated air ducts	-		
	-		
Max air pressure	10 bar		
Air flow	2000 l/min		
Air connection	G 1/2"		
Pneumatic valve	Integrated TC-valves	-	
Air quality	Oil-clean and waterless filtered air, with max 25µm particle content		
	Air/water ducts with automatic shut off function		
Number of ducts	1		
Dedicated air ducts	1	1 (6-10 bar)	-
Max air pressure	10 bar		
Air flow	2000 l/min		
Connection	G1/2"		
Air quality	Oil-clean and waterless filtered air, with max 25µm particle content		
Max water pressure	10 bar		
Water flow	20 l/min		
Water connection	G1/2"		
Water quality	Oil-clean and waterless filtered air, with max 25µm particle content		
	Electrical signals		
Number of signals	40	34	
Dedicated signals	1 +24V DC	-	
	1 0V DC	-	
	1 TC Coupled	-	
	1 TC Uncoupled	-	
	2 TC-valves	-	
Max current	5 A	-	
Max voltage	60 V	-	
Connections	3-module Harting 10B		
	Welding power		
Number of conductors	3	-	
Dedicated conductors	1 PE	-	
Max peak current	400 A	-	
Max coninuous current	140 A	-	
Max voltage	700 V	-	
Connections	Cable gland (Dia 19-28mm)		

Spot welding tool changers and tool attachments for servo gun

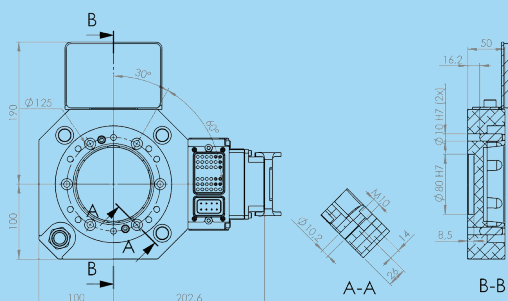
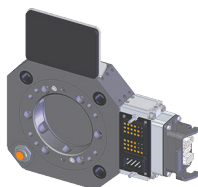
P6706
Tool changer TC240-SWS



P6708
Gun attachment TA240-SWS



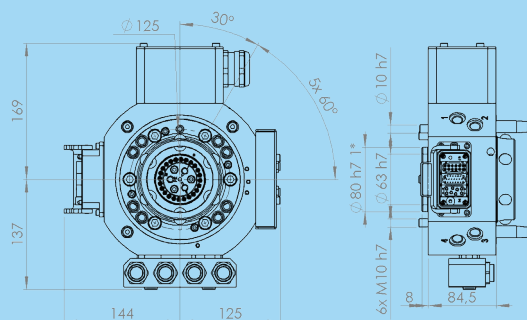
P6709
Tool attachment TA240-SW/
MH



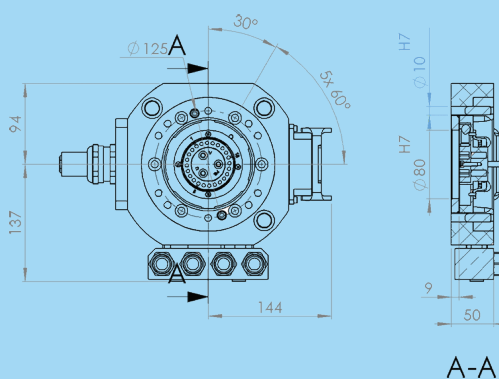
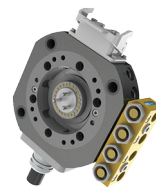
TC/TA240

Type	TC240-SWS	TA240-SWS	TA240-SW/MH
Article number	P6706	P6708	P6709
Weight (kg)	12.4	8.9	6
Mechanical interface	ISO 9409-1 125-6-M10 (center tap both Ø63 and Ø80)		
Working temperature	+10°C - +60°C		
IP classification	IP54		
	Maximum tool load		
Fz	± 2750 N		
Mz	± 1790 Nm		
Mx/My	± 1790 Nm		
	Air ducts without automatic shut off function		
Number of air ducts	5		
Max air pressure	10 bar		
Air flow	2000 l/min		
Air connection	G1/2"		
Pneumatic valve	Integrated TC-valves	-	
Air quality	Oil-clean and waterless filtered air, with max 25µm particle content		
	Air/water ducts with automatic shut off function		
Number of ducts	1		
Dedicated air ducts	1	-	
Max air pressure	10 bar		
Air flow	2000 l/min		
Connection	G1/2"		
Air quality	Oil-clean and waterless filtered air, with max 25µm particle content		
Max water pressure	10 bar		
Water flow	20 l/min		
Water connection	G1/2"		
Water quality	Please check manual for detail		
	Electrical signals		
Number of signals	40	34	
Dedicated signals	1 +24V DC	-	
	1 0V DC	-	
	1 TC Opened	-	
	1 TC Closed	-	
	2 TC-valves	-	
Max current	5 A	-	
Max voltage	60 V	-	
Number of servo power	-	-	
Dedicated signals	-	-	
Max current	16 A	-	
Max voltage	700 VAC	-	
Connections	3-module Harting 10B		
	Welding power		
Number of conductors	3	-	
Dedicated conductors	1 PE	-	
Max peak current	400 A	-	
Max coninuous current	140 A	-	
Max voltage	700 V	-	
Connections	Cable gland (Dia 19-28mm)		

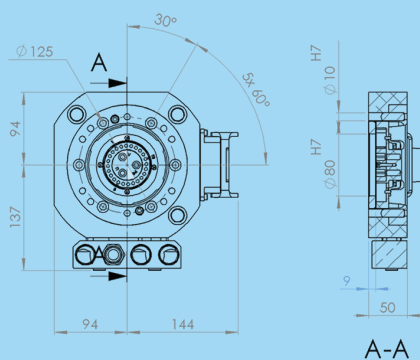
P6550
Tool changer TC275-SWP



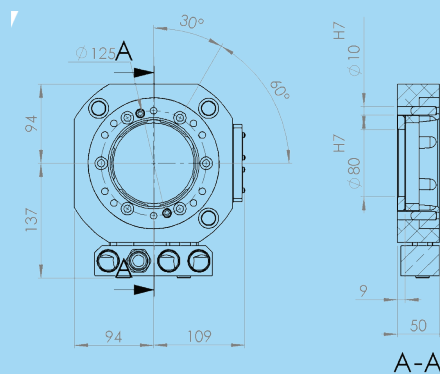
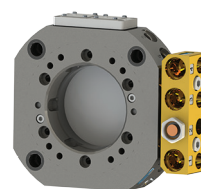
P6552
Gun attachment TA275-SWP



P6554
Tool attachment TA275-SWP/
MH



P6556
Tool attachment TA275-SWS/
TG



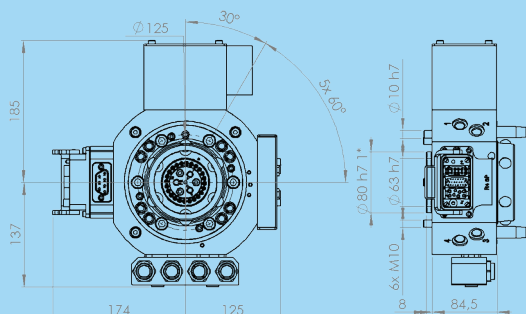
TC/TA275

*TC275 fits robots with centering diameter (d3) 63mm and 80mm

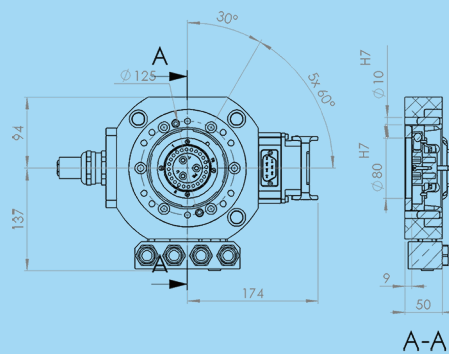
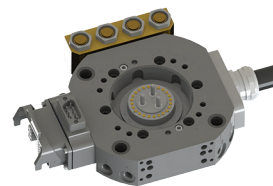
Type	TC275-SWP	TA275-SWP	TA275-SWP/MH	TA275-SWS/TG
Article number	P6550	P6552	P6554	P6556
Weight (kg)	12.3	6.2	5.9	5.7
Mechanical interface	ISO 9409-1 125-6-M10*			
Working temperature	+10°C - +60°C			
IP classification	IP 54			
	Maximum tool load			
Fz	± 2750 N			
Mz	± 1790 Nm			
Mx/My	± 1790 Nm			
	Air ducts without automatic shut off function			
Number of air ducts	8			
Max air pressure	10 bar			
Air flow	2000 l/min			
Air connection	G 1/4"			
Pneumatic valve	Integrated TC-valves	-		
Air quality	Oil-clean and waterless filtered air, with max 25µm particle content			
	Air/water ducts with automatic shut off function			
Number of ducts	4		1	
Dedicated air ducts	1 TC Open/Close (6-10 bar)			
Max air pressure	10 bar			
Air flow	2500 l/min			
Connection	G 1/2"			
Air quality	Oil-clean and waterless filtered air, with max 25µm particle content			
Max water pressure	10 bar		-	
Water flow	20 l/min		-	
Water connection	G 1/2"		-	
Water quality	Please check manual for detail		-	
	Electrical signals			
Number of signals	29	23		0
Dedicated signals	1 +24 V DC			-
	1 TC Coupled	1 PE		-
	3 TC Opened	-		
	2 TC Valves	-		
	1 PE	-		
Max current	5.0 A			-
Max voltage	60 V			-
Connections	3 module Harting 10B			-
	Welding power			
Number of conductors	3		-	
Dedicated conductors	1 Protective Earth		-	
Max peak current	400 A for Max 0.6s		-	
Max continous current	135 A		-	
Max voltage	690 V		-	
Connections	MC TSS150	1 m 3x25mm² cable, open end		-

Spot welding tool changers and tool attachments for servo gun

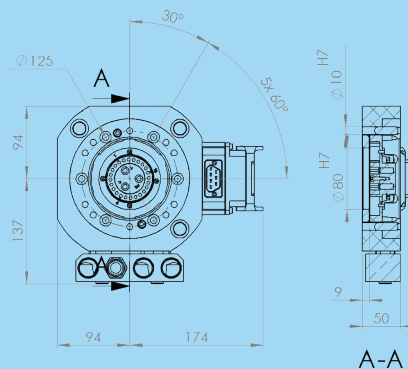
P6551
Tool changer TC275-SWS



P6553
Gun attachment TA275-SWS



P6555
Tool attachment TA275-SWS/
MH



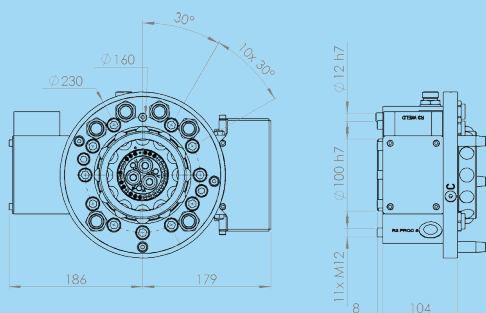
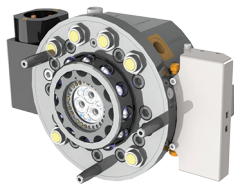
TC/TA275

*TC275 fits robots with centering diameter (d3) 63mm and 80mm

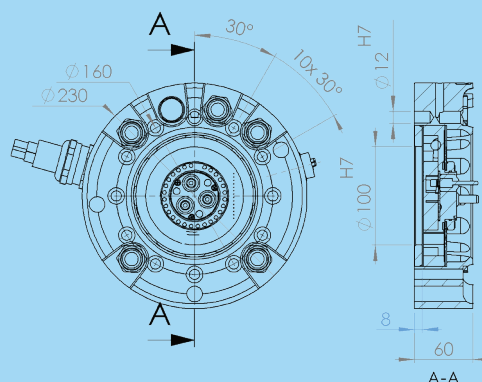
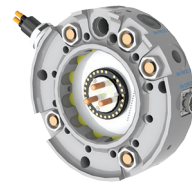
Type	TC275-SWS	TA275-SWS	TA275-SWS/MH
Article number	P6551	P6553	P6555
Weight (kg)	12.8	6.7	6.1
Mechanical interface	ISO 9409-1 125-6-M10*		
Working temperature	+10°C - +60°C		
IP classification	IP 54		
	Maximum tool load		
Fz	± 2750 N		
Mz	± 1790 Nm		
Mx/My	± 1790 Nm		
	Air ducts without automatic shut off function		
Number of air ducts	8		
Max air pressure	10 bar		
Air flow	2000 l/min		
Air connection	G 1/4"		
Pneumatic valve	Integrated TC-valves	-	
Air quality	Oil-clean and waterless filtered air, with max 25µm particle content		
	Air/water ducts with automatic shut off function		
Number of ducts	4	1	
Dedicated air ducts	1 TC Open/Close (6-10 bar)		
Max air pressure	10 bar		
Air flow	2500 l/min		
Connection	G 1/2"		
Air quality	Oil-clean and waterless filtered air, with max 25µm particle content		
Max water pressure	10 bar		
Water flow	20 l/min		
Water connection	G 1/2"		
Water quality	Please check manual for detail		
	Electrical signals		
Number of signals	32	26	23
Dedicated signals	1 +24 V DC		
	1 TC Coupled	1 PE	
	3 TC Opened	-	
	2 TC Valve	-	
	1 PE	-	
Max current	5.0 A		
Max voltage	60 V		
Number of servo power	4	-	
Dedicated signals	1 PE	-	
Max current	15 A	-	
Max voltage	690 V	-	
Connections	3 module Harting 10B		
	Welding power		
Number of conductors	3	-	
Dedicated conductors	1 PE	-	
Max peak current	400A for max 0.6s	-	
Max continous current	135 A	-	
Max voltage	690 V	-	
Connections	MCTSS150	1m 3x25mm² cable, open end	-

Spot welding tool changers and tool attachments for pneumatic gun

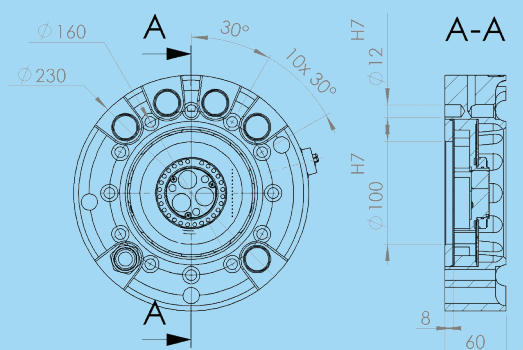
P6633A
Tool changer TC350-SWP



P6622A
Gun attachment TA350-SWP



P6624A
Tool attachment TA350-SW/
MH

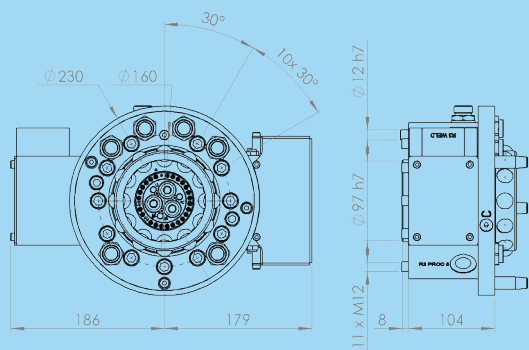


TC/TA350

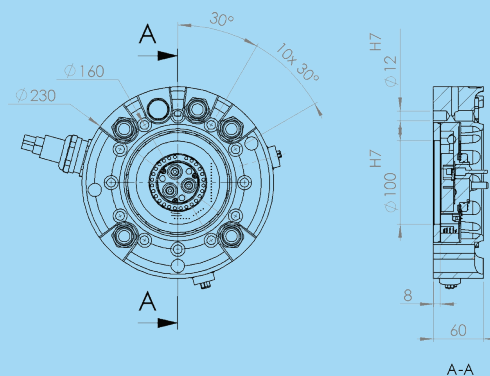
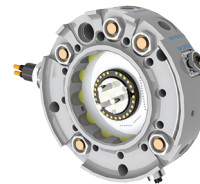
Type	TC350-SWP	TA350-SWP	TA350-SW/MH
Article number	P6633A	P6622A	P6624A
Weight (kg)	18.8	7.5	7.3
Mechanical interface	ISO 9409-1 160-11-M12		
Working temperature	+10°C - +60°C		
IP classification	IP 54		
	Maximum tool load		
Fz	± 3500 N		
Mz	± 2300 Nm		
Mx/My	± 2300 Nm		
	Air/water ducts with automatic shut off function		
Number of ducts	5	1	
Dedicated air ducts	1 (6-10 bar for tool change)		
Max air pressure	10 bar		
Air flow	2500 l/min		
Connection	G 1/2"		
Pneumatic valve	Integrated TC-valves	-	
Air quality	Oil-clean and waterless filtered air, with max 25µm particle content		
Max water pressure	10 bar		
Water flow	20 l/min	-	
Water connection	G 1/2"		
Water quality	Please check manual for detail		
	Electrical signals		
Number of signals	16	13	
Dedicated signals	1 +24 V DC		
	1 TC Coupled	1 PE	
	3 TC Opened	-	
	2 Tool Change Valves	-	
Max current	2 A		
Max voltage	60 V		
Connections	3 module Harting 10B	19S Souriau	
	Welding power		
Number of conductors	3	-	
Dedicated conductors	1 PE	-	
Max peak current	400 A for max 0.6s	-	
Max continous current	135 A	-	
Max voltage	690 V	-	
Connections	MC TSS150	1m 3x25mm² cable, open end	-

Spot welding tool changers and tool attachments for pneumatic gun

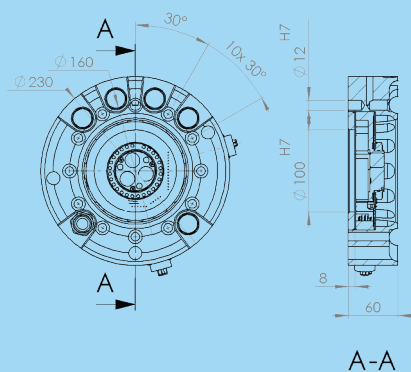
P6649A
Tool changer TC350-SWP



P6650A
Gun attachment TA350-SWP



P6651A
Tool attachment TA350-SWP/
MH

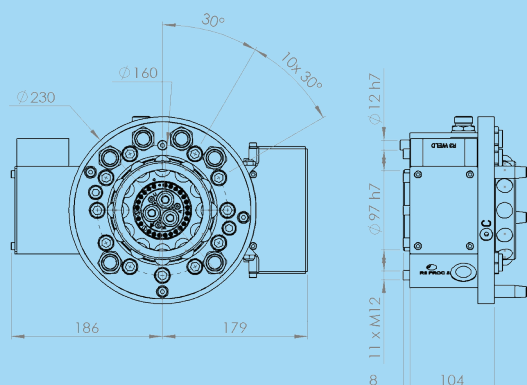
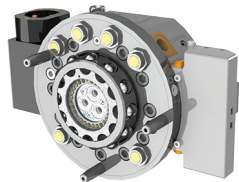


TC/TA350

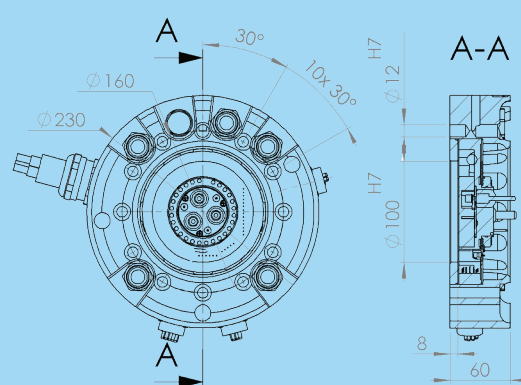
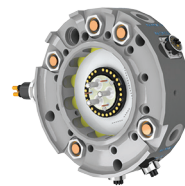
Type	TC350-SWP	TA350-SWP	TA350-SWP/MH
Article number	P6649A	P6650A	P6651A
Weight (kg)	16.0	8.0	7.4
Mechanical interface	ISO 9409-1 160-11-M12		
Working temperature	+10°C - +60°C		
IP classification	IP 54		
	Maximum tool load		
Fz	± 3500 N		
Mz	± 2300 Nm		
Mx/My	± 2300 Nm		
	Air/water ducts with automatic shut off function		
Number of ducts	5	1	
Dedicated air ducts	1 (6-10 bar for tool change)		
Max air pressure	10 bar		
Air flow	2500 l/min		
Connection	G 1/2"		
Pneumatic valve	Integrated TC-valves	-	
Air quality	Oil-clean and waterless filtered air, with max 25µm particle content		
Max water pressure	10 bar		
Water flow	20 l/min		
Water connection	G 1/2"		
Water quality	Please check manual for detail		
	Electrical signals		
Number of signals	29	26	
Dedicated signals	1 +24 V DC		
	1 TC Coupled	1 PE	
	3 TC Opened	-	
	2 Tool Change valves	-	
Max current	2 A		
Max voltage	60 V		
Connections	3 module Harting 10B	19S Souriau	
	Welding power		
Number of conductors	3	-	
Dedicated conductors	1 PE	-	
Max peak current	400 A for max 0.6s	-	
Max continous current	135 A	-	
Max voltage	690 V	-	
Connections	MC TSS150	1m 3x25mm2 cable, open end	-

Spot welding tool changers and tool attachments for servo gun

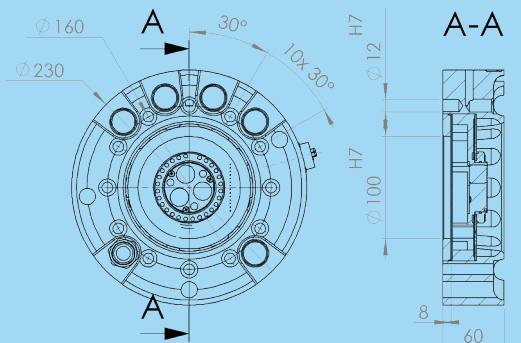
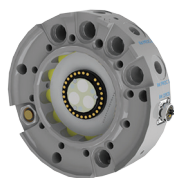
P6634A
Tool changer TC350-SWS



P6623A
Gun attachment TA350-SWS



P6624A
Tool attachment TA350-SW/
MH

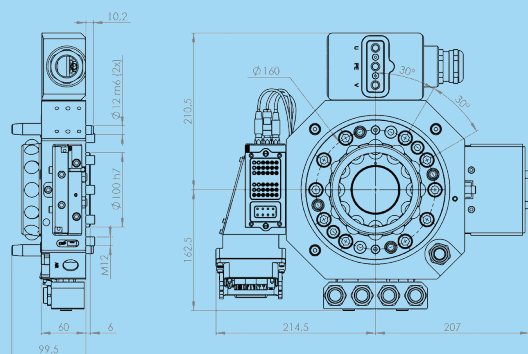
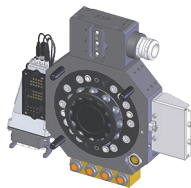


TC/TA350

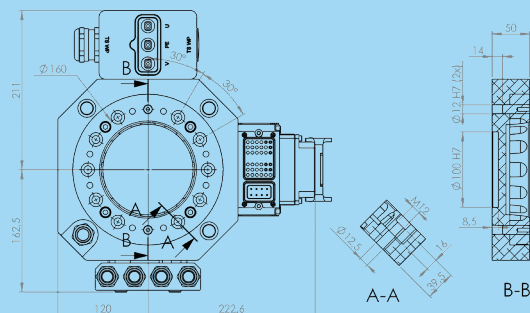
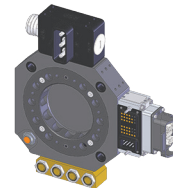
Type	TC350-SWS	TA350-SWS	TA350-SW/MH
Article number	P6634A	P6623A	P6624A
Weight (kg)	16.0	8.1	7.4
Mechanical interface	ISO 9409-1 160-11-M12		
Working temperature	+10°C - +60°C		
IP classification	IP 54		
	Maximum tool load		
Fz	± 3500 N		
Mz	± 2300 Nm		
Mx/My	± 2300 Nm		
	Air/water ducts with automatic shut off function		
Number of ducts	5		1
Dedicated air ducts	1 (6-10 bar for tool change)		
Max air pressure	10 bar		
Air flow	2500 l/min		
Connection	G 1/2"		
Pneumatic valve	Integrate TC-valves	-	
Air quality	Oil-clean and waterless filtered air, with max 25µm particle content		
Max water pressure	10 bar		
Water flow	20 l/min		-
Water connection	G 1/2"		
Water quality	Please check manual for detail		
	Electrical signals		
Number of signals	29	24	13
Dedicated signals	1 +24 V DC		
	1 TC Coupled	1 PE	
	3 TC Opened	-	
	2 Tool Change valves	-	
Max current	2.0 A		
Max voltage	60 V		
Number of servo power	3		-
Dedicated signals	-		
Max current	15 A		-
Max voltage	690 V		-
Connections	3 module Harting 10B	3x 19S Souriau	19S Souriau
	Welding power		
Number of conductors	3		-
Dedicated conductors	1 Protective Earth		-
Max peak current	400 A for Max 0.6s		-
Max continous current	135 A		-
Max voltage	690 V		-
Connections	MC TSS150	1 m 3x25 mm² cable, open end	-

Spot welding tool changers and tool attachments for pneumatic gun

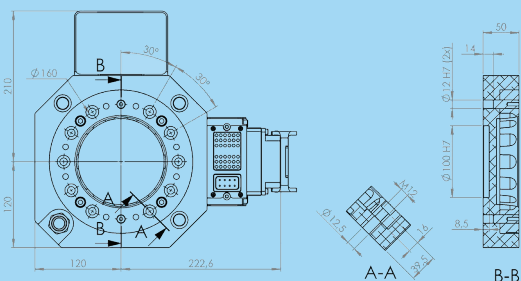
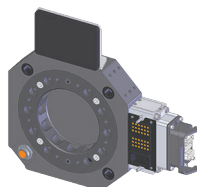
P6805
Tool changer TC480-SWP



P6807
Gun attachment TA480-SWP



P6809
Tool attachment TA480-SW/
MH

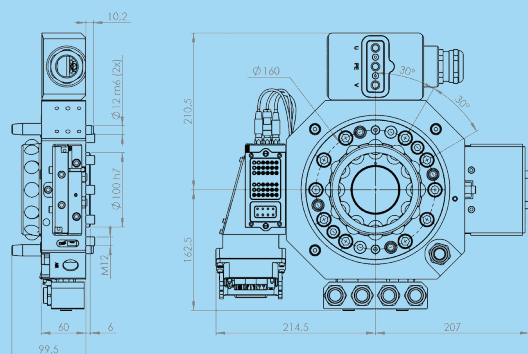
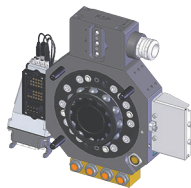


TC/TA480

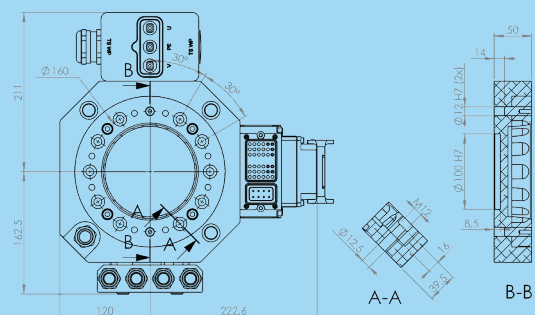
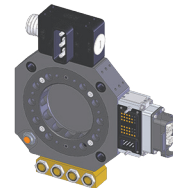
Type	TC480-SWP	TA480-SWP	TC480-SW/MH
Article number	P6805	P6807	P6809
Weight (kg)	17.1	12	8.6
Mechanical interface	ISO 9409-1 160-11-M12		
Working temperature	+10°C - +60°C		
IP classification	IP54		
	Maximum tool load		
Fz	±3500 N		
Mz	± 2300 Nm		
Mx/My	± 2300 Nm		
	Air ducts without automatic shut off function		
Number of air ducts	5		
Dedicated air ducts	-		
	-		
Max air pressure	10 bar		
Air flow	2000 l/min		
Air connection	G1/2"		
Pneumatic valve	Integrated TC-valves	-	
Air quality	Oil-clean and waterless filtered air, with max 25µm particle content		
	Air/water ducts with automatic shut off function		
Number of ducts	1		
Dedicated air ducts	1	1 (6-10 bar)	-
Max air pressure	10 bar		
Air flow	2000 l/min		
Connection	G1/2"		
Air quality	Oil-clean and waterless filtered air, with max 25µm particle content		
Max water pressure	10 bar		
Water flow	20 l/min		
Water connection	G1/2"		
Water quality	Oil-clean and waterless filtered air, with max 25µm particle content		
	Electrical signals		
Number of signals	40	34	
Dedicated signals	1 +24V DC	-	
	1 0V DC	-	
	1 TC Opened	-	
	1 TC Closed	-	
	2 TC-valves	-	
Max current	5A	-	
Max voltage	60V	-	
Connections	3-module Harting 10B		
	Welding power		
Number of conductors	3	-	
Dedicated conductors	1 PE	-	
Max peak current	400 A	-	
Max coninuous current	140 A	-	
Max voltage	700 V	-	
Connections	Cable gland (Dia 19-28mm)		Cable

Spot welding tool changers and tool attachments for servo gun

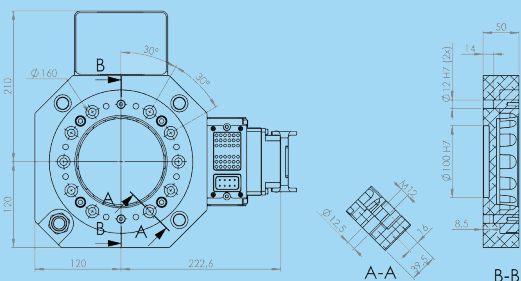
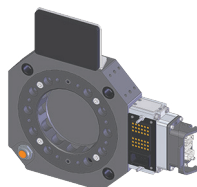
P6806
Tool changer TC480-SWS



P6808
Gun attachment TA480-SWS



P6809
Tool attachment TA480-SW/
MH

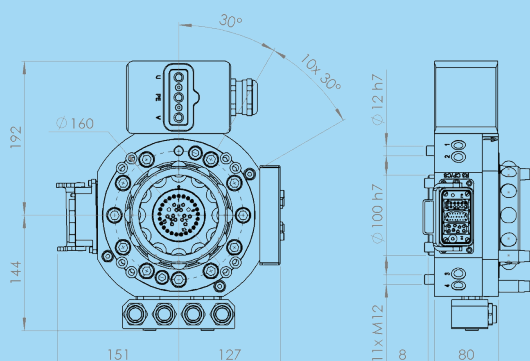


TC/TA480

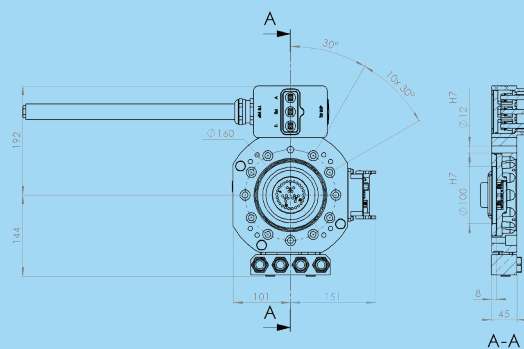
Type	TC480-SWS	TA480-SWS	TA480-SW/MH
Article number	P6806	P6808	P6809
Weight (kg)	17.1	12	8.6
Mechanical interface	ISO 9409-1 160-11-M12		
Working temperature	+10°C - +60°C		
IP classification	IP54		
	Maximum tool load		
Fz	± 3500 N		
Mz	± 2300 Nm		
Mx/My	± 2300 Nm		
	Air ducts without automatic shut off function		
Number of air ducts	5		
Max air pressure	10 bar		
Air flow	2000 l/min		
Air connection	G 1/2"		
Pneumatic valve	Integrated TC-valves	-	
Air quality	Oil-clean and waterless filtered air, with max 25µm particle content		
	Air/water ducts with automatic shut off function		
Number of ducts	1		
Dedicated air ducts	1	-	
Max air pressure	10 bar		
Air flow	2000 l/min		
Connection	G 1/2"		
Air quality	Oil-clean and waterless filtered air, with max 25µm particle content		
Max water pressure	10 bar		
Water flow	20 l/min		
Water connection	G1/2"		
Water quality	Oil-clean and waterless filtered air, with max 25µm particle content		
	Electrical signals		
Number of signals	40	34	
Dedicated signals	1 +24V DC	-	
	1 0V DC	-	
	1 TC Opened	-	
	1 TC Closed	-	
	2 TC-valves	-	
Max current	5 A	-	
Max voltage	60 V	-	
Number of servo power	3		
Dedicated signals	1 PE	-	
Max current	16A	-	
Max voltage	700 VAC	-	
Connections	Same as for signals		
	Welding power		
Number of conductors	3	-	
Dedicated conductors	1 PE	-	
Max peak current	400 A	-	
Max coninous current	140 A	-	
Max voltage	700 V	-	
Connections	Cable gland (Dia19-28mm)		

Spot welding tool changers and tool attachments for pneumatic gun

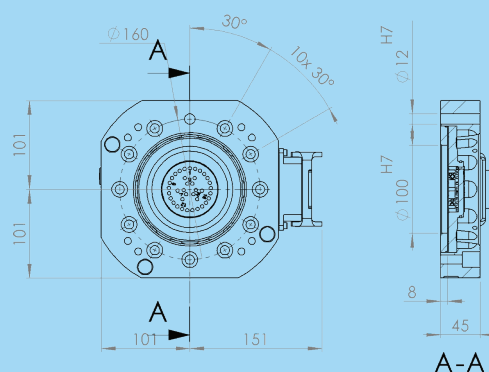
P0593
Tool changer TC500-SWP



P0595
Gun attachment TA500-SWP



P0597
Tool attachment TA500-SWP/
MH

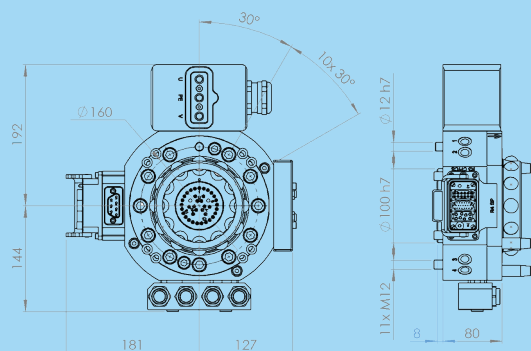


TC/TA500

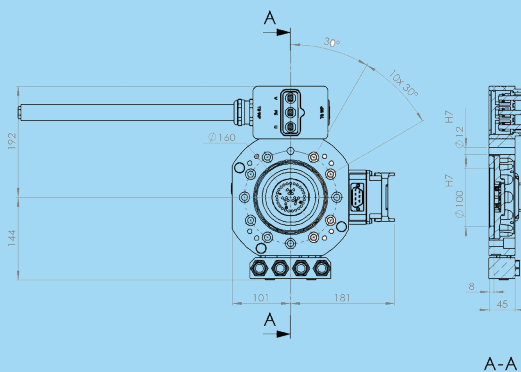
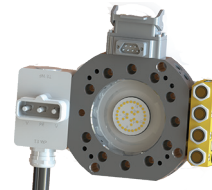
Type	TC500-SWP	TA500-SWP	TA500-SWP/MH
Article number	P0593	P0595	P0597
Weight (kg)	16.0	10.0	7.0
Mechanical interface	ISO 9409-1 160-11-M12		
Working temperature	+10°C - +60°C		
IP classification	IP 54		
	Maximum tool load		
Fz	± 5000 N		
Mz	± 2300 Nm		
Mx/My	± 2300 Nm		
	Air ducts without automatic shut off function		
Number of air ducts	8		
Max air pressure	10 bar		
Air flow	2000 l/min		
Air connection	G 1/4"		
Pneumatic valve	Integrated TC-valves	-	
Air quality	Oil-clean and waterless filtered air, with max 25µm particle content		
	Air/water ducts without automatic shut off function		
Number of ducts	4	-	
Dedicated air ducts	1 TC Open/Close (6-10 bar)		
Max air pressure	10 bar		
Air flow	2500 l/min		
Connection	G 1/2"		
Air quality	Oil-clean and waterless filtered air, with max 25µm particle content		
Max water pressure	10 bar	-	
Water flow	20 l/min	-	
Water connection	G 1/2"	-	
Water quality	Please check manual for detail		-
	Electrical signals		
Number of signals	43	36	
Dedicated signals	1 +24 V DC		
	1 TC Couple	1 PE	
	3 TC Uncouple	-	
	3 TC Valves	-	
	1 PE	-	
Max current	5.0 A		
Max voltage	60 V		
Connections	3 module Harting 10B		
	Welding power		
Number of conductors	3	-	
Dedicated conductors	1 Protective Earth	-	
Max peak current	400 A for Max 0.6s	-	
Max continous current	135A	-	
Max voltage	690V	-	
Connections	Cable gland (19-28mm)	1.3 m 3x25mm² cable with open end	-

Spot welding tool changers and tool attachments for servo gun

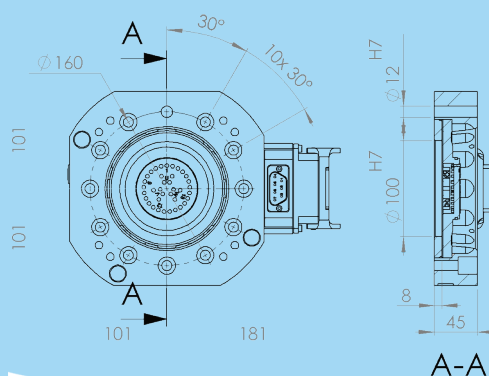
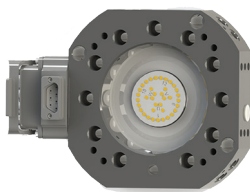
P0594
Tool changer TC500-SWS



P0596
Gun attachment TA500-SWS



P0598
Tool attachment TA500-SWS/
MH

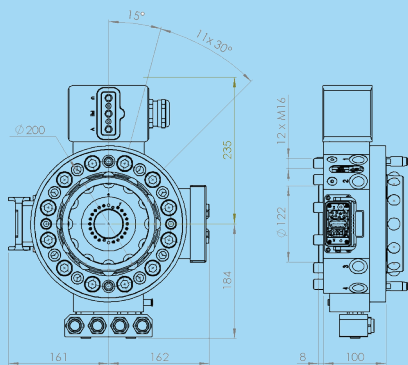
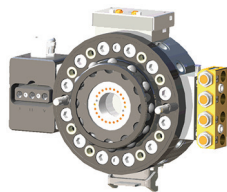


TC/TA500

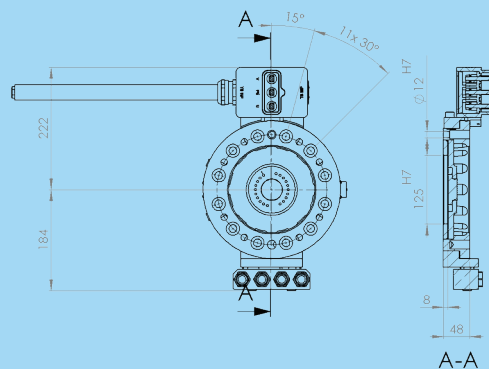
Type	TC500-SWS	TA500-SWS	TA500-SWS/MH
Article number	P0594	P0596	P0598
Weight (kg)	16.2	10.3	7.2
Mechanical interface	ISO 9409-1 160-11-M12		
Working temperature	+10°C - +60°C		
IP classification	IP 54		
	Maximum tool load		
Fz	± 5000 N		
Mz	± 2300 Nm		
Mx/My	± 2300 Nm		
	Air ducts without automatic shut off function		
Number of air ducts	8		
Max air pressure	10 bar		
Air flow	2000 l/min		
Air connection	G 1/4"		
Pneumatic valve	Integrated TC-valves	-	
Air quality	Oil-clean and waterless filtered air, with max 25µm particle content		
	Air/water ducts with automatic shut off function		
Number of ducts	4	-	
Dedicated air ducts	1 TC Open/Close (6-10 bar)	-	
Max air pressure	10 bar	-	
Air flow	2500 l/min	-	
Connection	G 1/2"	-	
Air quality	Oil-clean and waterless filtered air, with max 25µm particle content	-	
Max water pressure	10 bar	-	
Water flow	20 l/min	-	
Water connection	G 1/2"	-	
Water quality	Please check manual for detail		-
	Electrical signals		
Number of signals	43	36	
Dedicated signals	1 +24 V DC		
	1 TC Coupled	1 PE	
	3 TC Opened	-	
	2 TC Valve	-	
	1 PE	-	
Max current	5.0 A		
Max voltage	60 V		
Number of servo power	4		
Dedicated signals	1 PE		
Max current	15 A		
Max voltage	690 V		
Connections	3 module Harting 10B		
	Welding power		
Number of conductors	3	-	
Dedicated conductors	1 PE	-	
Max peak current	400 A for Max 0.6s		
Max continous current	135 A (25mm²) 150 A (35mm²)	135 A	-
Max voltage	690 V		-
Connections	Cable gland (19-28mm)	1.3 m 3x25mm² cable with open end	-

Spot welding tool changers and tool attachments for pneumatic gun

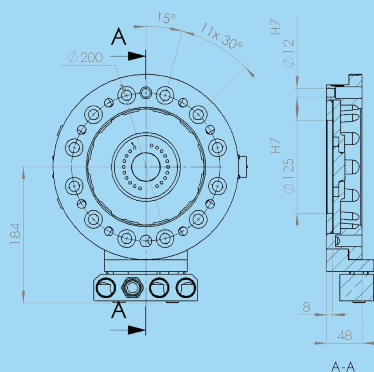
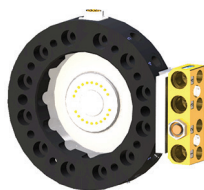
P0745
Tool changer TC1000-SWP



P0747
Gun attachment TA275-SWP



P0749
Tool attachment TA1000-SWP/MH

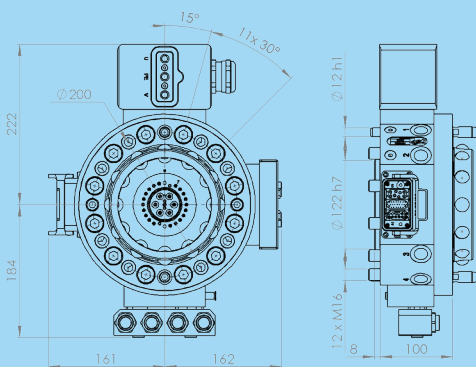
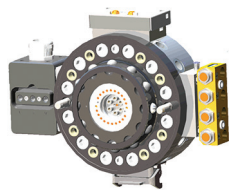


TC/TA1000

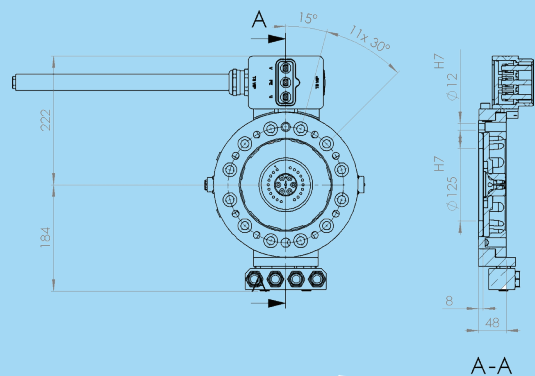
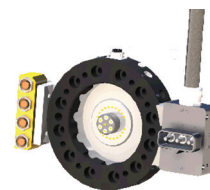
Type	TC1000-SWP	TA1000-SWP	TA1000-SWP/MH
Article number	P0745	P0747	P0749
Weight (kg)	24.6	12.3	10.3
Mechanical interface	ISO 9409-1 200-12-M16		
Working temperature	+10°C - +60°C		
IP classification	IP 54		
	Maximum tool load		
Fz	± 10000 N		
Mz	± 10000 Nm		
Mx/My	± 10000 Nm		
	Air ducts without automatic shut off function		
Number of Air ducts	8		
Max Air pressure	10 bar		
Air flow	2700 l/min		
Air connection	G 1/2"		
Pneumatic valve	Integrated TC-valves	-	
Air quality	Oil-clean and waterless filtered air, with max 25µm particle content		
	Air/water ducts with automatic shut off function		
Number of ducts	4	1	
Dedicated Air ducts	1 (6-10 bar for tool change)		
Max Air pressure	10 bar		
Air flow	2500 l/min		
Connection	G 1/2"		
Air quality	Oil-clean and waterless filtered air, with max 25µm particle content		
Max water pressure	10 bar		
Water flow	20 l/min		
Water connection	G 1/2"		
Water quality	Please check manual for detail		
	Electrical signals		
Number of signals	23	19	
Dedicated signals	2 +24 V DC		
	1 0 V DC		
	1 TC Coupled	-	
	1 TC Opened	-	
	2 Tool Change Valves	-	
Max current	5 A		
Max voltage	60 V		
Connections	3 module Harting 10B	23S Souriau	
	Welding power		
Number of conductors	3	-	
Dedicated conductors	1 PE	-	
Max peak current	400 A for Max 0.6s		
Max continous current	135 A (25mm²) 150 A (35mm²)	135 A	-
Max voltage	690 V		-
Connections	Cable gland (19-28mm)	1.3 m 3x25mm² cable with open end	-

Spot welding tool changers and tool attachments for servo gun

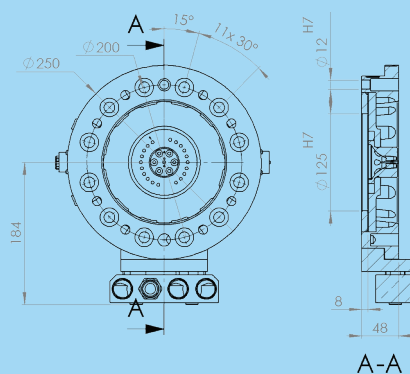
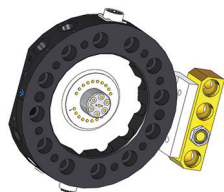
P0746
Tool changer TC1000-SWS



P0748
Gun attachment TA1000-SWS

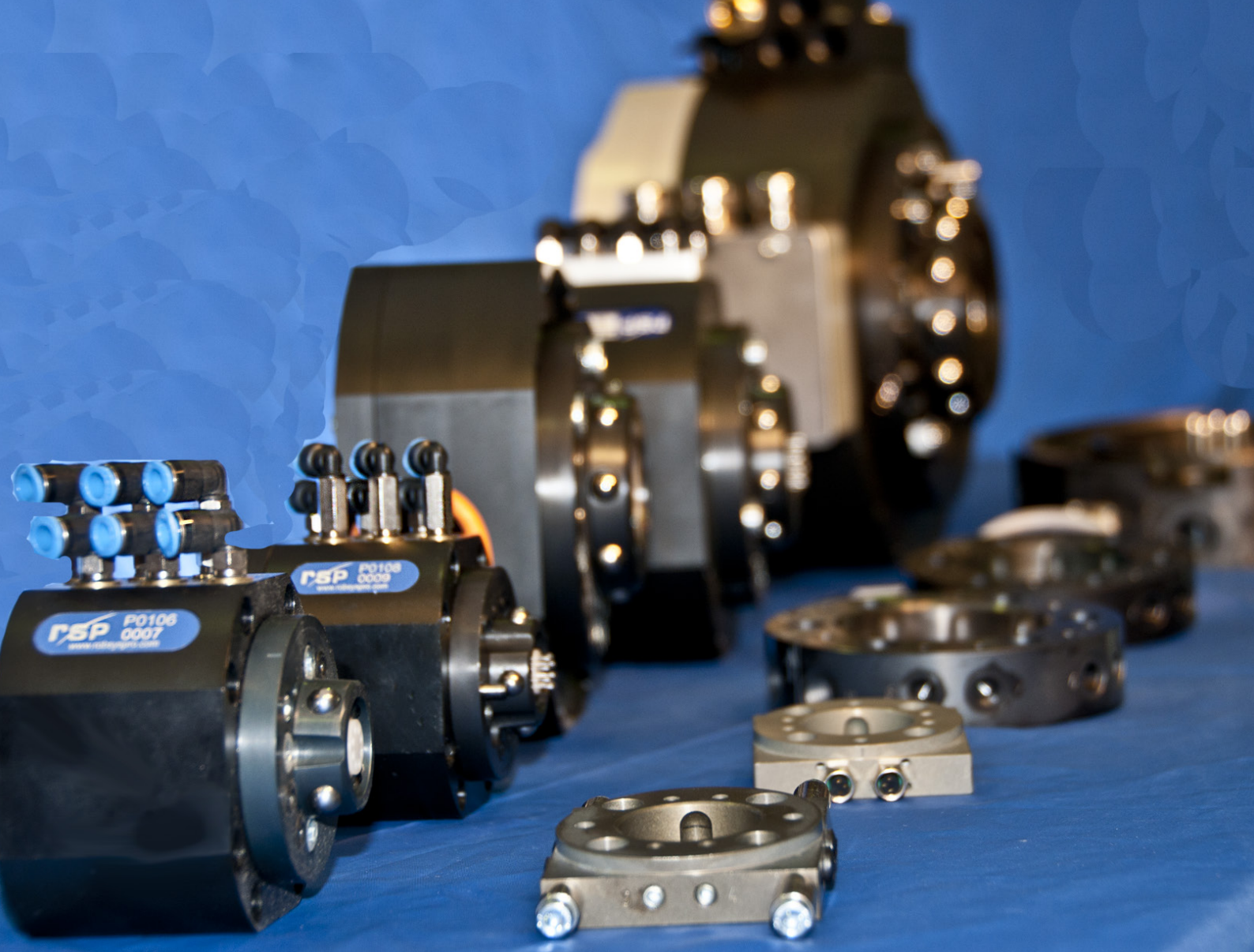


P0750
Tool attachment TA1000-SWS/MH



TC/TA1000

Type	TC1000-SWS	TA1000-SWS	TA1000-SWS/MH
Article number	P0746	P0748	P0750
Weight (kg)	24.8	12.4	10.4
Mechanical interface	ISO 9409-1 200-12-M16		
Working temperature	+10°C - +60°C		
IP classification	IP 54		
	Maximum tool load		
Fz	± 10000 N		
Mz	± 10000 Nm		
Mx/My	± 10000 Nm		
	Air ducts without automatic shut off function		
Number of Air ducts	8		
Max Air pressure	10 bar		
Air flow	2700 l/min		
Air connection	G 1/2"		
Pneumatic valve	Integrated TC-valves	-	
Air quality	Oil-clean and waterless filtered air, with max 25µm particle content		
	Air/water ducts with automatic shut off function		
Number of ducts	4	1	
Dedicated Air ducts	1 TC Open/Close (6-10 bar)		
Max Air pressure	10 bar		
Air flow	2500 l/min		
Connection	G 1/2"		
Air quality	Oil-clean and waterless filtered air, with max 25µm particle content		
Max water pressure	10 bar		
Water flow	20 l/min		
Water connection	G 1/2"		
Water quality	Please check manual for detail		
	Electrical signals		
Number of signals	26	23	
Dedicated signals	2 +24 V DC		
	1 0 V DC		
	1 TC Coupled	1 PE	
	1 TC Opened	-	
	2 Tool change valves	-	
Max current	5 A		
Max voltage	60 V		
Number of servo power	3	4	
Dedicated signals	-	1 PE	
Max current	15 A		
Max voltage	690 V		
Connections	3 module Harting 10B	1x 19S Souriau, 1x 23S Souriau	
	Welding power		
Number of conductors	3	-	
Dedicated conductors	1 PE	-	
Max peak current	400 A for Max 0.6s		
Max continous current	135 A (25mm²) 150 A (35mm²)	135 A	-
Max voltage	690 V		
Connections	Cable gland (19-28mm)	1.3 m 3x25mm² cable with open end	-



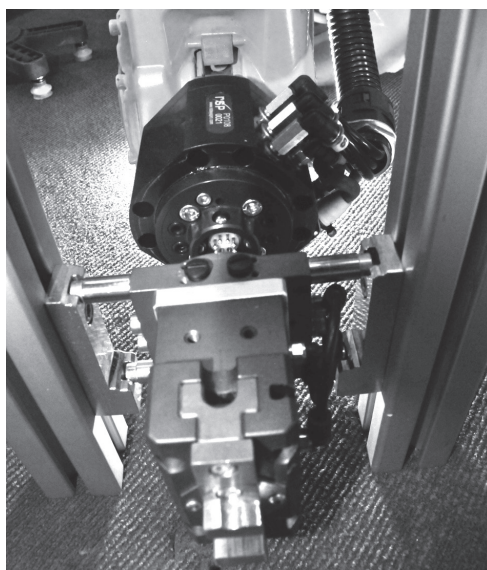
Swivels with tool changer and attachments

Swivels with tool changer

Swivels with integrated tool changer are a unique combination of a swivel unit with a built in TrueConnect™ tool changer which provides absolute position repeatability and is the fastest and most durable tool changer on the market.

The swivels provide air supply and electrical signals without limiting your robot's motion capabilities. You can spin the 6:th axis free from hoses, cables or other obstacles. Low weight, high corrosion resistance and minimum service will shorten your cycle-times, enhance your productivity and maximize uptime in any application involving substantial robot motions.

- No limit to axis 5 and 6
- Together with RSP hose packages, no limit to axis 4, 5 and 6
- Air, electrical signals, FieldBus from axis 5 to the tool
- Even Water, 200 A weld power & servo motor power and signal
- Integrated automatic tool changer makes a compact system

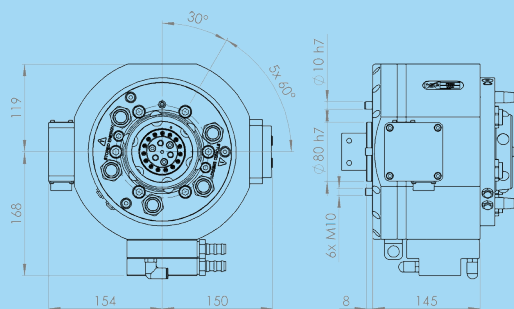


Note! RSP's design of swivel units is based on the ISO standard for robot flanges. For the swivel unit to be able to function properly an adaptation kit has to be included. RSP provides a wide range of adaptation kits for different robot brands. However if you do not find your robot model please contact RSP support.

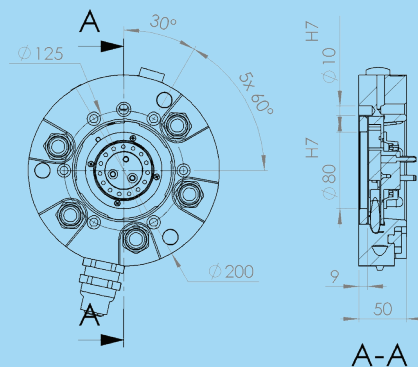
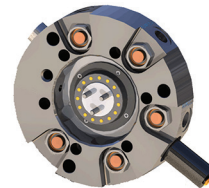


Spot welding swivels with tool changer and tool attachments for pneumatic gun

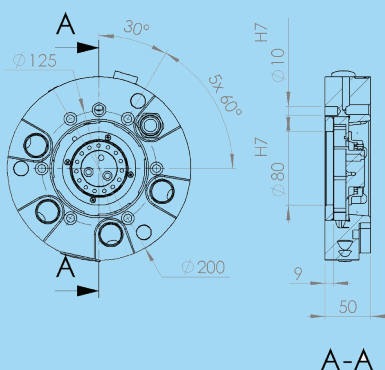
P6402
Swivel with tool changer
STC250-SWP



P6404
Gun attachment TA250-SWP



P6405
Tool attachment TA250-SWP/
MH

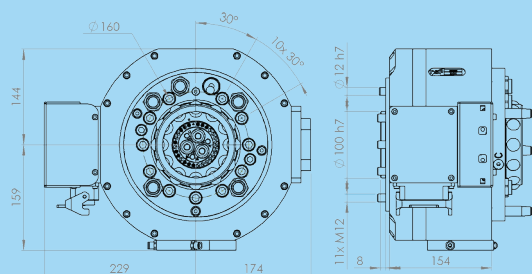
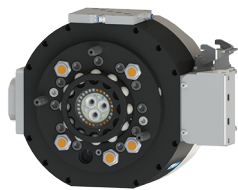


STC/TA250

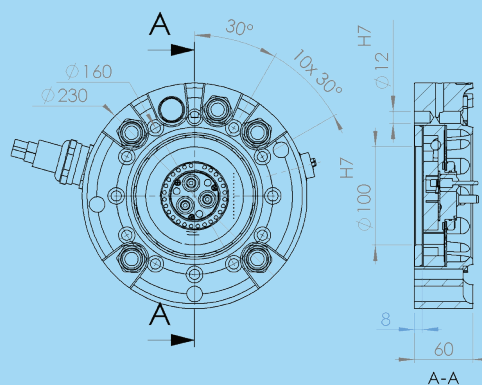
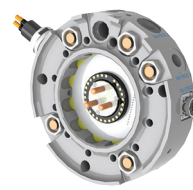
Type	STC250-SWP	TA250-SWP	TA250-SWP/MH
Article number	P6402	P6404	P6405
Weight (kg)	14.7	2.7	2.8
Mechanical interface	ISO 9409-1 125-6-M10		
Working temperature	+10°C - +60°C		
IP classification	IP 54		
	Maximum tool load		
Fz	± 2500 N		
Mz	± 1790 Nm		
Mx/My	± 1790 Nm		
	Air ducts		
Number of air ducts	2	1	
Dedicated air ducts	1 (6-10 bar for tool change)		
Air pressure proc 1	6-10 bar		
Air pressure proc 5	Max. 10 bar		
Air flow proc 1	2.000 l/min, free at Pin = 1.0 MPa		
Air flow proc 5	2.000 l/min, free at Pin = 1.0 MPa		
Air connection	G1/2"		
Pneumatic valve	Integrated TC-valves	-	
Air quality	Oil-clean and waterless filtered air, with max 25µm particle content		
	Water ducts		
Number of water ducts	3	-	
Max water pressure	10 bar	-	
Water flow	16 l/min	-	
Water connection	G 1/2"	-	
Water quality	Please check manual for detail	-	
	Electrical signals		
Number of signals	18	15	
Dedicated signals	1 +24 V DC		
	1 0 DC		
	1 TC Coupled		
	1 TC Opened	-	
	2 Tool Change Valves	-	
Max current	2.0 A	2.0 A	
Max voltage	60 V	60 V	
Connections	23P Souriau	19S Souriau	
	Welding power		
Number of conductors	3	-	
Dedicated conductors	1 PE	-	
Max peak current	400A for Max 0.6s	-	
Max continous current	135 A	-	
Max voltage	690 V	-	
Connections	RSP Interface. Type: Multi-Contact TSS/25	1 m cable with open end 3x 25mm²	-

Spot welding swivels with tool changer and tool attachment

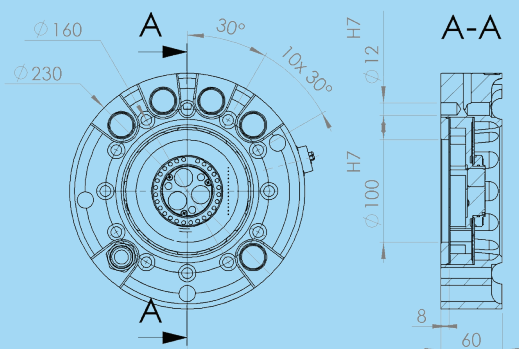
P6620A
Swivel with tool changer
STC350-SWP



P6622A
Gun attachment
TA350-SWP



P6624A
Tool attachment
TA350-SW/MH

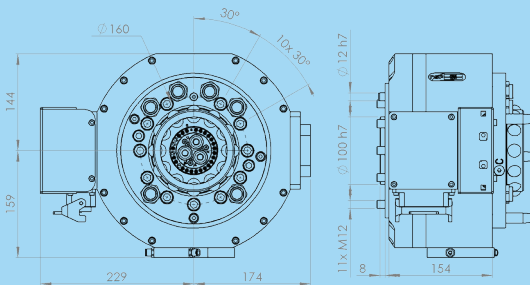
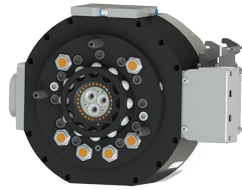


STC/TA350

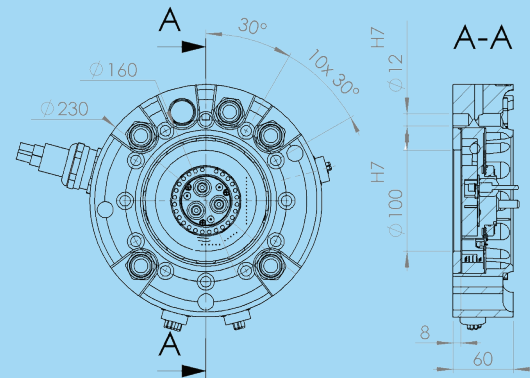
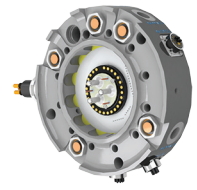
Type	STC350-SWP	TA350-SWP	TA350-SW/MH
Article number	P6620A	P6622A	P6624A
Weight (kg)	25.4	7.5	7.3
Mechanical interface	SO 9409-1 160-11-M12		
Working temperature	+10°C - +60°C		
IP classification	IP 54		
	Maximum tool load		
Fz	± 3500 N		
Mz	± 2300 Nm		
Mx/My	± 2300 Nm		
	Air ducts		
Number of air ducts	2	1	
Dedicated air ducts	1 (6-10 bar for tool change)		
Air pressure proc 1	6-10 bar		
Air pressure proc 5	Max. 10 bar		
Air flow proc 1	2.000 l/min, free at Pin = 1.0 MPa	2.500 l/min	
Air flow proc 5	2.000 l/min, free at Pin = 1.0 MPa	2.500 l/min	
Air connection	G1/2"		
Pneumatic valve	Integrated TC-valves	-	
Air quality	Oil-clean and waterless filtered air, with max 25µm particle content		
	Water ducts		
Number of water ducts	3	-	
Max water pressure	10 bar	-	
Water flow	16 l/min	20 l/min	-
Water Connection	G1/2"		-
Water quality	Please check manual for detail		-
	Electrical signals		
Number of signals	16	13	11
Dedicated signals	2 +24 V DC	1 +24 V DC	
	1 0 V DC	1 PE	
	1 TC Coupled	-	
	1 TC Opened	-	
	2 Tool change valves	-	
Max current	3.0 A		
Max voltage	60 V		
Number of servo power	-		
Max current	-		
Max voltage	-		
Connections	3 module Harting 10B	19S Souriau	
	Welding power		
Number of conductors	3	-	
Dedicated conductors	1 PE	-	
Max peak current	400 A for Max 0.6s	-	
Max continous current	135 A	-	
Max voltage	690 V	-	
Connections	MCTSS150	1 m 3x25mm² cable, open end	-

Spot welding swivels with tool changer and tool attachment

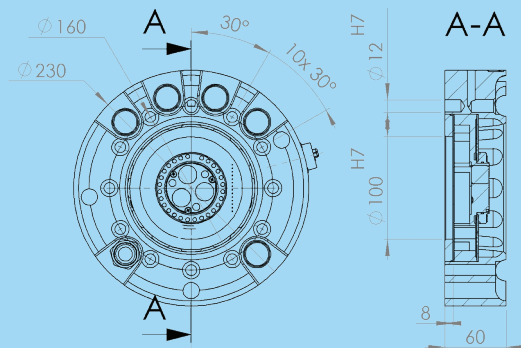
P6621A
Swivel with tool changer
STC350-SWS



P6623A
Tool attachment TA350-SWS



P6624A
Tool attachment TA350-SW/
MH

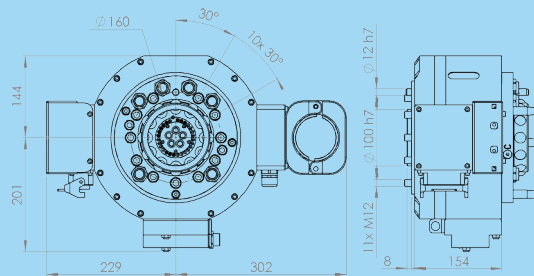
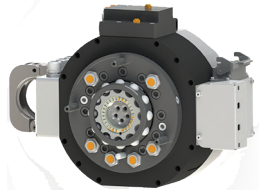


STC/TA350

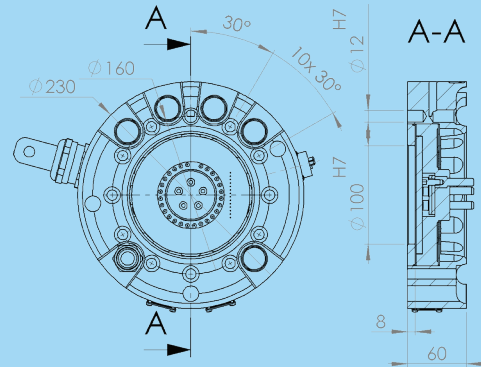
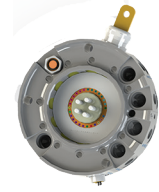
Type	STC350-SWS	TA350-SWS	TA350-SW/MH
Article number	P6621A	P6623A	P6624A
Weight (kg)	30.0	8.1	7.3
Mechanical interface	SO 9409-1 160-11-M12		
Working temperature	+10°C - +60°C		
IP classification	IP 54		
	Maximum tool load		
Fz	± 3500 N		
Mz	± 2300 Nm		
Mx/My	± 2300 Nm		
	Air ducts		
Number of air ducts	2	1	
Dedicated air ducts	1 (6-10 bar for tool change)		
Air pressure proc 1	6-10 bar		
Air pressure proc 5	Max. 10 bar		
Air flow proc 1	2.000 l/min, free at Pin = 1.0 MPa	2.500 l/min	
Air flow proc 5	2.000 l/min, free at Pin = 1.0 MPa	2.500 l/min	
Air connection	G1/2"		
Pneumatic valve	Integrated TC-valves	-	
Air quality	Oil-clean and waterless filtered air, with max 25µm particle content		
	Water ducts		
Number of water ducts	3	-	
Max water pressure	10 bar	-	
Water flow	16 l/min	20 l/min	-
Water Connection	G1/2"		-
Water quality	Please check manual for detail		-
	Electrical signals		
Number of signals	27	24	11
Dedicated signals	2 +24 V DC	1 +24 V DC	
	1 0 V DC	1 PE	
	1 TC Coupled	-	
	1 TC Opened	-	
	2 Tool change valves	-	
Max current	3.0 A		
Max voltage	60 V		
Number of servo power	3	-	
Max current	15 A	-	
Max voltage	690 V	-	
Connections	3 module Harting 10B	3 19S Souriau	19S Souriau
	Welding power		
Number of conductors	3	-	
Dedicated conductors	1 PE	-	
Max peak current	400 A for Max 0.6s	-	
Max continous current	135 A	-	
Max voltage	690 V	-	
Connections	MC TSS150	1 m 3x25mm² cable, open end	-

Arc welding grounding swivels with tool changer and tool attachment

P6656A
Swivel with tool changer
STC350-AWG

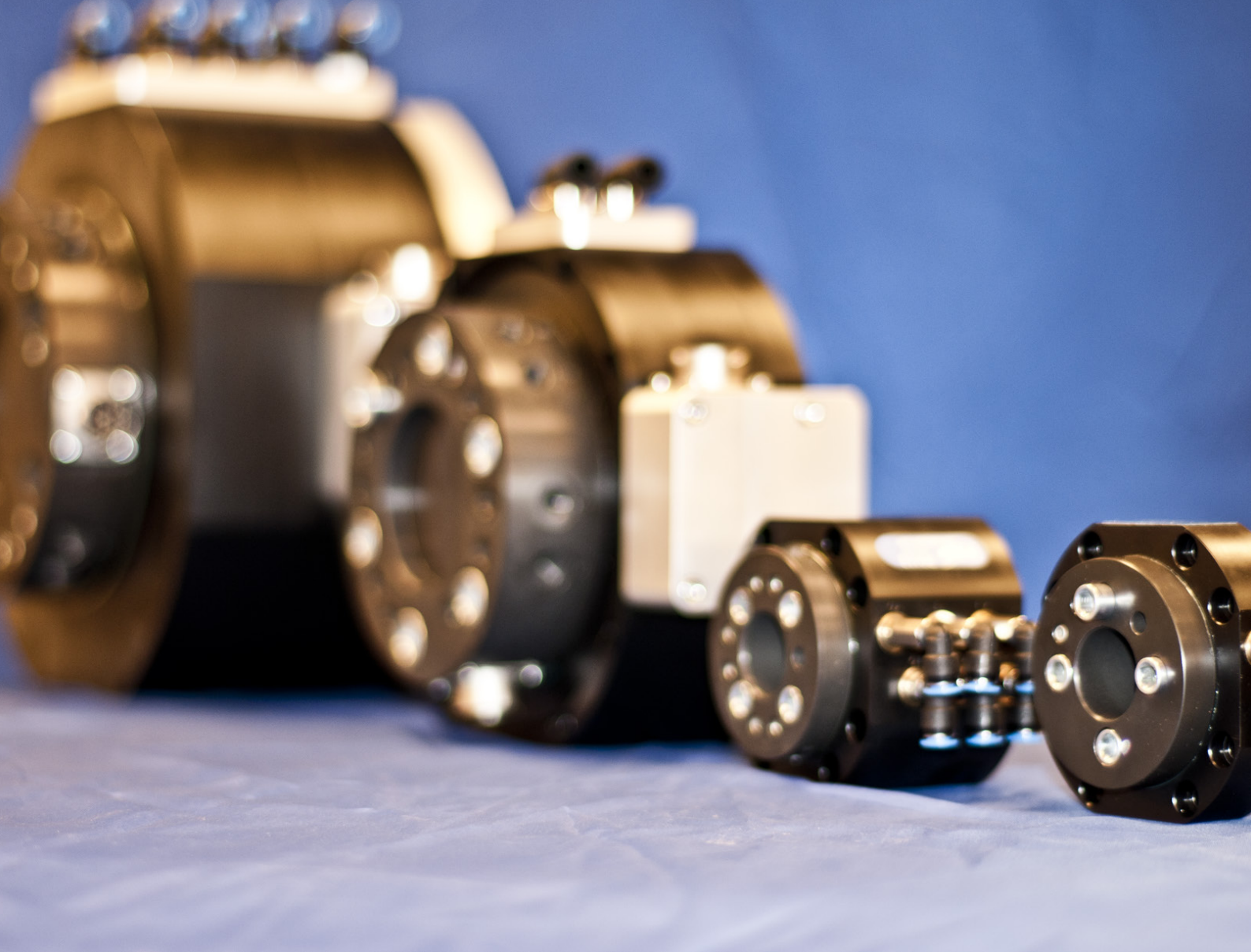


P6657A
Gun attachment
TA350-AWG



STC/TA350

Type	STC350-AWG	TA350-AWG
Article number	P6656A	P6657A
Weight (kg)	33.2	8.0
Mechanical interface	SO 9409-1 160-11-M12	
Working temperature	+10°C - +60°C	
IP classification	IP 54	
	Maximum tool load	
Fz	± 3500 N	
Mz	± 2300 Nm	
Mx/My	± 2300 Nm	
	Air ducts	
Number of air ducts	1	
Dedicated air ducts	1 (6-10 bar for tool change)	
Max air pressure	10 bar	
Air flow	2000 l/min	
Air connection	G 1/2"	
Pneumatic valve	Integrated TC-valves	-
Air quality	Oil-clean and waterless filtered air, with max 25µm particle content	
	Electrical signals	
Number of signals	27	22
Dedicated signals	2 +24 V DC	1 +24 V DC
	1 0 V DC	1 PE
	1 TC Coupled	-
	1 TC Opened	-
	2 Tool change valves	-
Max current	3.0 A	
Max voltage	60 V	
Connections	3 module Harting 10B	2x 19S Souriau
	Welding power	
Number of conductors	1 (3 connections)	1
Dedicated conductors	1 PE	
Max peak current	400 A for max 0.6s	
Max continuous current	650 A	
Max voltage	690 V	
Connections	3x Cable gland (11-17mm)	Copper plate with Ø10.5 hole

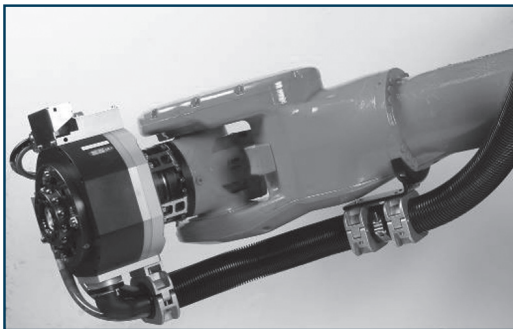


Swivels

Swivels

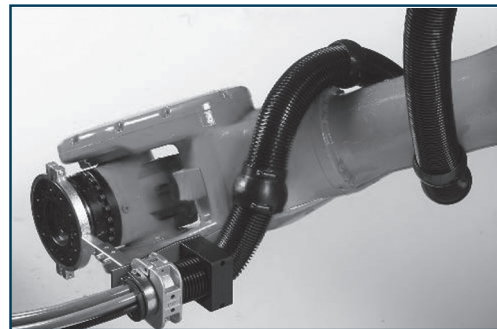
Our new family of swivels provides air supply and electrical signals without limiting your robot's motion capabilities. You can spin the 6:th axis free from hoses, cables or other obstacles. Low weight, high corrosion resistance and minimum service will shorten your cycle-times, enhance your productivity and maximize uptime in any application involving substantial robot motions.

- No limit to axis 6
- Together with RSP hose packages, no limit to axis 4, 5 and 6
- Air, electrical signals, FieldBus from axis 6 to the tool
- Water, 200 A weld power, servo motor power and signal for spot welding



With swivel

The rotation of axis 6 does not affect the Dress Pack on the upper arm



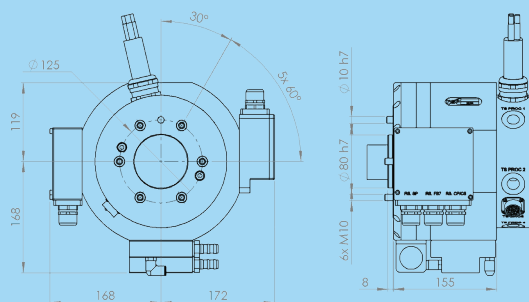
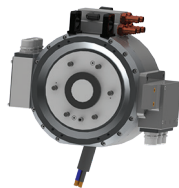
Without swivel

Hose and cable package has to be twisted round the upper arm of the robot when axis 6 rotates

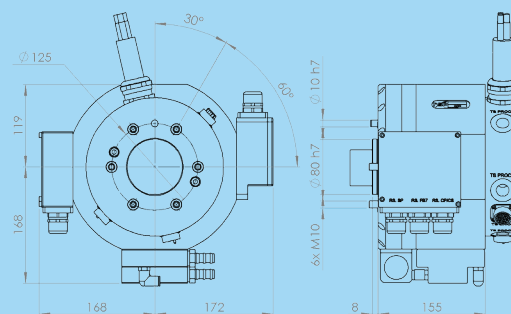
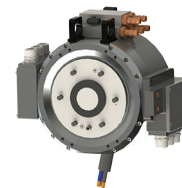
Note! RSP's design of swivel units is based on the ISO standard for robot flanges. For the swivel unit to be able to function properly an adaptation kit has to be included. RSP provides a wide range of adaptation kits for different robot brands. However if you do not find your robot model please contact RSP support.

Spot welding swivels

P6433
Swivel S250-SWP



P6434
Swivel S250-SWS

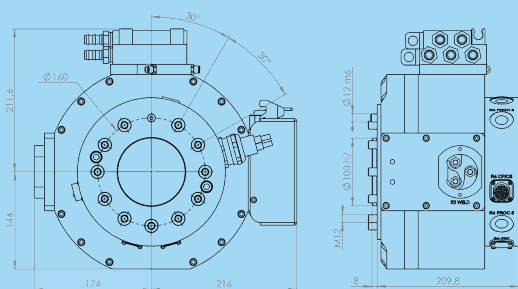
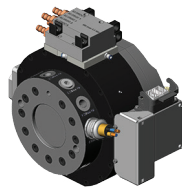


S250

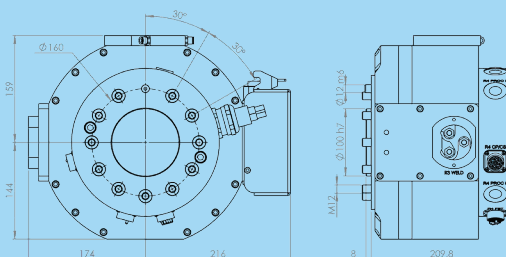
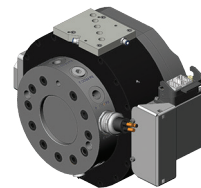
Type	S250-SWP	S250-SWS
Article number	P6433	P6434
Weight (kg)	18.8	18.9
Mechanical interface	ISO 9409-1 125-6-M10	
Working temperature	+10°C - +60°C	
IP classification	IP 54	
	Maximum tool load	
Fz	± 2500 N	
Mz	± 2500 Nm	
Mx/My	± 2500 Nm	
	Air/water ducts	
Number of air/water ducts	5	
Max air/water pressure	10 bar	
Air flow	2000 l/min	
Water flow	14 l/min	
Connection, robot side	G 1/2"	
Connection, tool side	G 1/2"	
Air quality	Oil-clean and waterless filtered air, with max 25µm particle content	
Pneumatic valve	-	
Water quality	Please check manual for detail	
	Electrical signals	
Number of slip ring signals	18	36
Dedicated signals	1 PE	
Max current	2 A	
Max voltage	60 V	
Connection, robot side	3x Cable gland (11-17mm)	
Connection, tool side	19S Souriau	2x 19S Souriau
Number of servo signals	-	3
Max current	-	15 A
Max voltage	-	690 V
Connection, robot side	-	Cable gland (11-17mm)
Connection, tool side	-	19S Souriau
	Welding power	
Number of conductors	3	
Dedicated conductors	1 PE	
Max peak current	400 A for max 0.6s	
Max continuous current	135 A	
Max voltage	690 V	
Connection, robot side	3x Cable gland (11-17mm)	
Connection, tool side	1m 25mm ² cable (open end)	

Spot welding swivels

P6644
Swivel S350-SWP

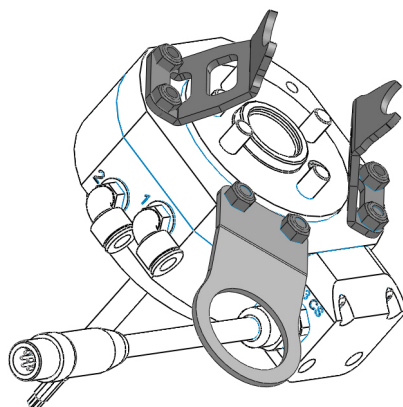
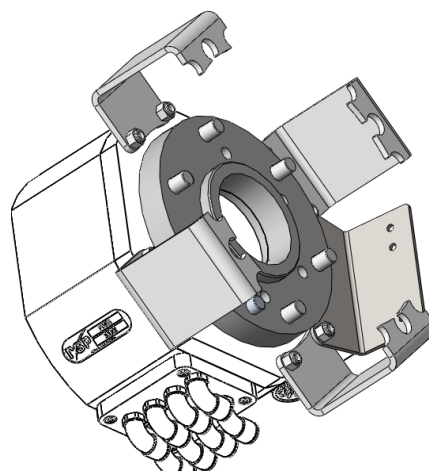
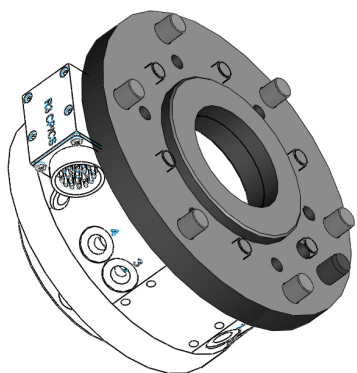


P6645
Swivel S350-SWS



S350

Type	S350-SWP	S350-SWS
Article number	P6644	P6645
Weight (kg)	27.2	25.8
Mechanical interface	ISO 9409-1 160-11-M12	
Working temperature	+10°C - +60°C	
IP classification	IP 54	
	Maximum tool load	
Fz	± 3500 N	
Mz	± 2300 Nm	
Mx/My	± 2300 Nm	
	Air/Water ducts	
Number of air/water ducts	5	
Max air/water pressure	10 bar	
Air flow	2000 l/min	
Water flow	14 l/min	
Connection, robot side	G 1/2"	
Connection, tool side	G 1/2"	
Pneumatic valve	-	
Air quality	Oil-clean and waterless filtered air, with max 25µm particle content	
Water quality	Please check manual for detail	
	Electrical signals	
Number of slip ring signals	16	27
Max current	3.0 A	
Max voltage	60 V	
Connection, robot side	3 module Harting 10B	(3 module Harting 10B see below)
Connection, tool side	19S Souriau	2x 19S Souriau
Number of servo signals	-	3
Max current	-	15 A
Max voltage	-	690 V
Connection, robot side	-	3 module Harting 10B
Connection, tool side	-	19S Souriau
	Welding power	
Number of conductors	3	
Dedicated conductors	1 PE	
Max peak current	400 A for max 0.6s	
Max continuous current	135 A	
Max voltage	690 V	
Connection, robot side	MC TSS150	
Connection, tool side	1.3m 25mm² cable (open end)	



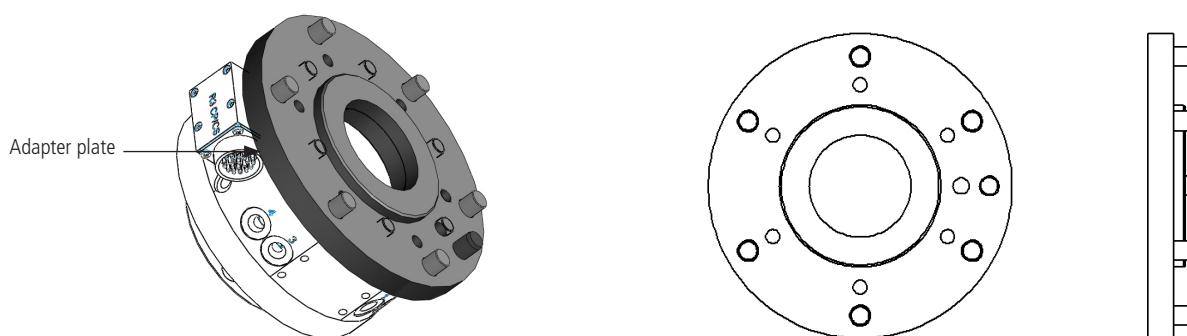
Options

Options

Robot System Products design of swivel units are based on the ISO standard for robot flange. For the swivel unit to be able to function properly, an adapter kit has to be included. RSP also market adaptation plates for different ISO sizes.

NOTE! There is always a risk when a large robot is equipped with a small tool changer due to the fact that the larger robot produces higher forces in acceleration, deceleration and most importantly when the robot performe an emergency stop. The maximum dynamic forces are rated for each product and you can always consult a RSP representative or our website if you have any questions on how to select the right product for your robot.

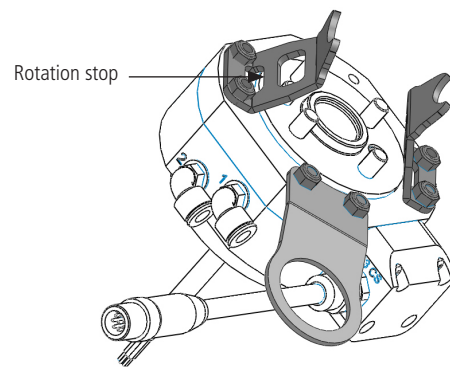
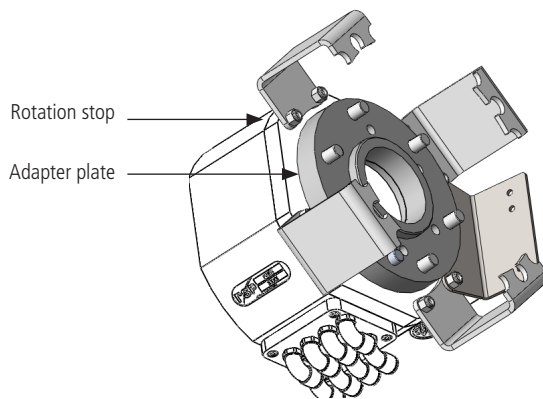
Adaptation kits for tool changers



All screws are included.

Tool changer	Article number	Robot model	Mechanical interface robot flange	Weight (Kg)	Adapter plate thickness (mm)
TC275	-	Fits directly to robot with ISO-flange	ISO 9409-1 125-6-M10	-	-
	P6428	ABB IRB6600/2.55-175	ISO 9409-1 160-11-M12	3.30	16
		ABB IRB6640/2.55-180			
		ABB IRB6600/others			
		ABB IRB6640/others			
		ABB IRB6620			
TC350, TC480, TC500	-	Fits directly to robot with ISO-Flange	ISO 9409-1 160-11-M12	-	-
	P0657	ABB IRB7600	ISO 9409-1 200-12-M16	6.43	25
	P0664	KUKA KR360-2, KR360 450-2PA	ISO 9409-1 200-6-M12	5.5	25
		KUKA KR500-2, KR500-2CR, KR500 570-2PA			
		Kawasaki MX350L			
		Kawasaki MX420L			
		Kawasaki MX500N			
	P6430	Motoman ES165N, ES165N-100	ISO 9409-1 125-6-M10	2.74	16
	P0670	FANUC R2000iB 175L/210F	ISO 9409-1 125-10-M10	2.16	15

Adaptation kits for swivels and swivels with tool changer



All screws are included.

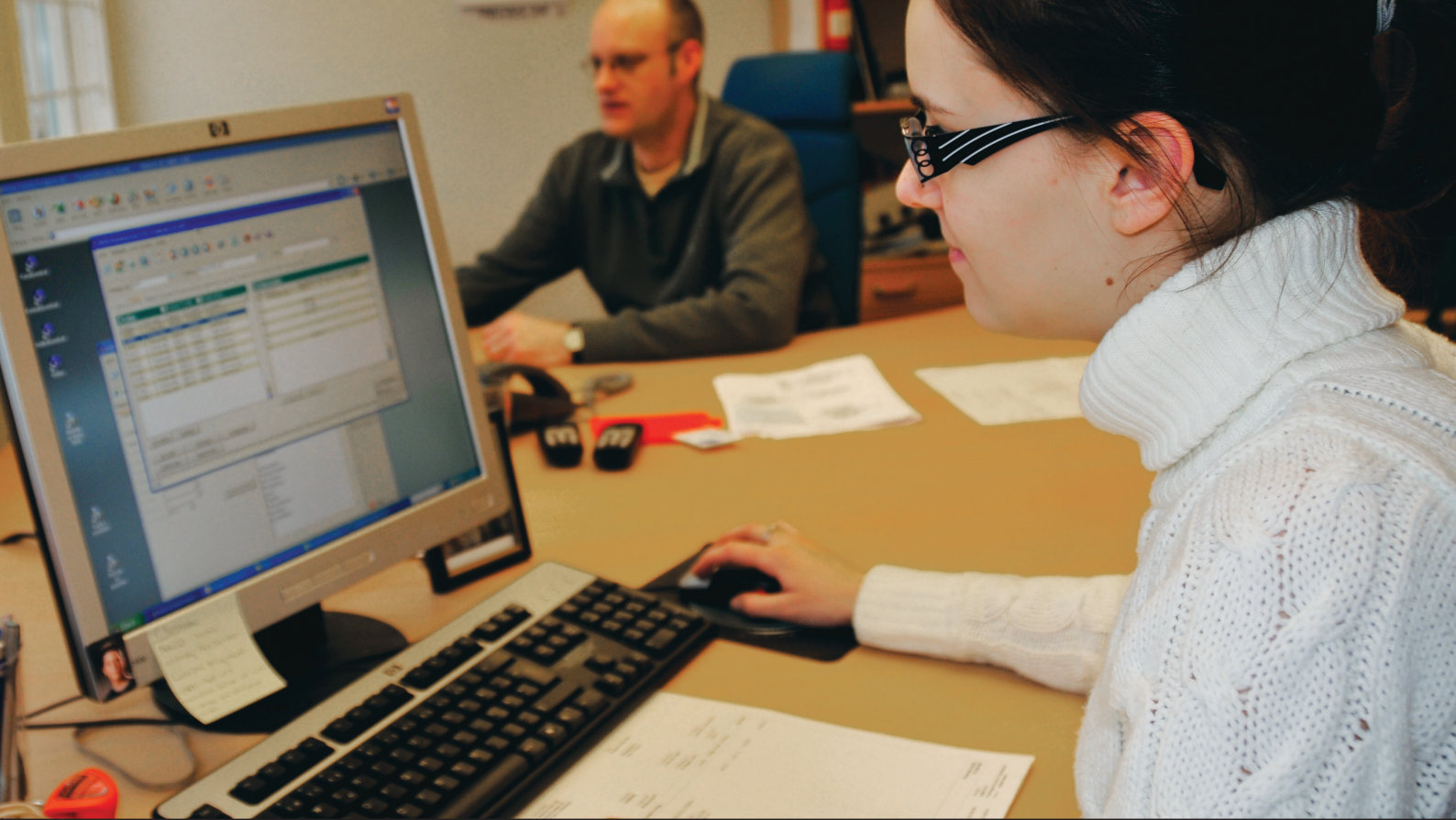
Swivel	Article number	Robot model	Mechanical interface robot flange	Weight (Kg)	Adapter plate thickness (mm)
S250, STC250	P6419	ABB IRB6400	ISO 9409-1 160-11-M12	0.70	-
	P6424	ABB IRB6600/2.55-175		4.12	16
		ABB IRB6640/2.55-180			
	P6425	ABB IRB6600/others		4.25	16
		ABB IRB6640/other			
		ABB IRB6650S 125			
	P6427	ABB IRB6620		4.05	16
	P6461	KUKA KR125/3			
	P6448	Motoman ES165N		1.84	
	P0683	FANUC R2000iB 175L/210F		0.38	
	P6445	Kawasaki ZX165U		0.38	
S350, STC350	P0620	ABB IRB6600/2.55-175		0.99	
		ABB IRB6640/2.55-180			
	P0621	ABB IRB6600/others		1.06	
		ABB IRB6400/others			
		ABB IRB6650S 125			
	P0656	ABB IRB6620 with optional side seal		0.74	-
	P0622	ABB IRB7600			
S350, STC350 Sealed version	P0696	ABB IRB6600/2.55-175		1.96	-
		ABB IRB6640/2.55-180			
	P0697	ABB IRB6600/others		1.84	-
		ABB IRB6400/others			
		ABB IRB6650S 125			

Options for tool changers, swivels with tool changer and swivels

Options	Article number	Description
Options to TC240	P6711	Signal interface 23P Souriau (included in TC240-1EV)
	P6712	Signal interface 3-module Harting (included in TC240-SWP)
	P6713	Signal and servo interface 3-module Harting (included in TC240-SWS)
	P6714	2 water/air couplings
	P6715	4 water/air couplings (included in TC240-SWx)
	P6716	Power, cable gland (included in TC240-SWx)
	P6717	Power, MC-connector
	P6718	Integrated valve (included in TC240-1EV and 240-SWx)
	P6719	Magnetic sensors open and close (included in TC240-1EV and TC240-SWx)
Options to TA240	P6721	Signal interface 19S Souriau (included in TA240-1E)
	P6722	Signal interface 3-module Harting (included in TA240-SWP and TA240-SW/MH))
	P6723	Signal and servo interface 3-module Harting (included in TA240-SWS)
	P6724	2 water/air couplings
	P6725	4 water/air couplings (included in TA240-SWx)
	P6726	Power, cable gland (included in TA240-SWx)
Options to TC275	P6512	Signal interface 3-module Harting (included in TC275-SWP)
	P6513	Signal and servo interface 3-module Harting (included in TC275-SWS)
	P6715	4 water/air couplings (included in TC275-SWx)
	P6518	Power, cable gland (included in TC275-SWx)
	P6519	Power, MC-connector
	P0512	Integrated valve (included in TC275-SWx)
	P6740	1 air coupling
Options to TA275	P6516	1 m power cable and signal interface 3-module Harting (included in TA275-SWP)
	P6517	1 m power cable, signals and servo interface 3-module Harting (included in TA275-SWS)
	P6536	Signal interface 3-module Harting (included in TA275-SWP/MH)
	P6537	Signal interface 3-module Harting and servo dummy (included in TA275-SWS/MH)
	P6725	4 water/air couplings (included in TA275-SWx)
	P6741	1 air coupling (included in TA275-SWx/MH)
Options to TC480	P6711	Signal interface 23P Souriau (included in TC480-1EV)
	P6712	Signal interface 3-module Harting (included in TC480-SWP)
	P6713	Signal and servo interface 3-module Harting (included in TC480-SWS)
	P6714	2 water/air couplings
	P6715	4 water/air couplings (included in TC480-SWx)
	P6716	Power, cable gland (included in TC480-SWx)
	P6717	Power, MC-connector
	P6718	Integrated valve (included in TC480-1EV and TC480-SWx)
	P6719	Magnetic sensors open and close (included in TC480-1EV and TC480-SWx)
Options to TA480	P6721	Signal interface Souriau (included in TA480-1E)
	P6722	Signal interface 3-module Harting (included in TA480-SWP and TA480-SW/MH)
	P6723	Signal and servo interface 3-module Harting (included in TA480-SWS)
	P6724	2 water/air couplings
	P6725	4 water/air couplings (included in TA480-SWx)
	P6726	Power, cable gland (included in TA480-SWx)

Options for tool changers, swivels with tool changer and swivels

Options	Article number	Description
Options to TC500	P0507	Signal interface 3-module Harting (included in TC500-SWP)
	P0537	Signals and servo interface 3-module Harting (included in TC500-SWS)
	P6716	Power, cable gland (included in TC500-SWx)
	P6717	Power, MC-connector
	P0512	Integrated valve (included in TC500-SWx)
	P6715	4 water/air couplings (included in TC500-SWx)
	P6740	1 air coupling
Options to TA500	P0511	Signal interface 1m cable
	P0510	Signal interface 3-module Harting (included in TA500-SWP and TA500-SWP/MH)
	P0538	Signals and servo interface 3-module Harting (included in TA500-SWS)
	P0573	Signal interface 3-module Harting and servo dummy (included in TA500-SWS/MH)
	P6726	Power, cable gland (included in TA500-SWx)
	P6725	4 water/air couplings (included in TA500-SWx)
	P6741	1 air coupling (included in TA500-SWx/MH)
Options to TC1000	P0706	Signals and servo interface 3-module Harting (included in TC1000-SWS)
	P0737A	Power, cable gland (included in TC1000-SWx)
	P0744	Power, MC-connector
	P0705	Integrated valve (included in TC1000-SWx)
	P0713A	4 water/air couplings (included in TC1000-SWx)
	P0741A	1 air coupling
Options to TA1000	P0709	Servo interface 19S Souriau (included in TA1000-SWS)
	P0738A	1 m power cable (included in TA1000-SWx)
	P0714A	4 water/air couplings (included in TA1000-SWx)
	P0742A	1 air coupling (included in TA1000-SWx/MH)



How to order from RSP

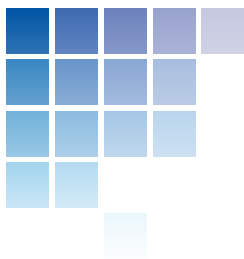
Ordering from RSP is easy! There are a few steps you should consider before you place an order:

- The size of the payload and robot when selecting the product
- The Robot model name and arm length, model year if available

If you already are a RSP customer go to step 4

1. Contact person phone number and e-mail address
2. Company name, address, phone/fax number and email
3. Organisation and tax number (VAT inside Europe)
4. Fill out the Part number, description, price and amount in your order form
5. Fill out the PO number, date, required delivery date and delivery address if it's different
6. If available, state the quotation number. Otherwise the current price list is used
7. Fax the order to +46 21 81 66 01 or e-mail to order@robsyspro.com





Dressing robots worldwide

Sweden Robot System Products AB Phone: +46 21 816 600 Email: contact@robsyspro.com	Argentina-Chile-Peru-Uruguay IRB Solutions S.A. Phone: +54 3488 472 422 Email: cmpomilio@irbsolutions.com	Australia - New Zealand Robotize Pty Ltd Phone: +61 1300 916 431 Email: enquiry@robotize.com.au
Brasil SINOVA Phone: +55 11 5677 3919 Email: p.ramos@sinova.com.br	BeNeLux AXYSTO Phone: +32 686 484 00 Email: info@axysto.com	China Robot System Products Co., Ltd Phone: +86 21 5190 5290 Email: info@robsyspro.com.cn
Denmark Hoff Vakuumtechnik Phone: +45 251 700 85 Email: ndh@hoff-vakuum.dk	Finland Oy Interfii Ltd Phone: +358 201474500 Email: info@interfii.com	France A.M.D.P. S.A.S. Phone: +33 130 092 527 Email: info@amdp.fr
Germany Robot System Products GmbH Phone: +8221 257959-0 Email: info@rsp.de.com	India Kay Vybin Corporation Phone: +91 22 2896 4671/2897 4972 Email: swati.mane@kayvybin.com	Ireland Robotic & Drives Services Ltd. Phone: +353 (0)87 050 7945 Email: stephen@rdservice.ie
Italy Arcotech S.r.l. Phone: +39 392 028 977 Email: f.intini@arcotech.it	Korea S.V Tech Phone: +82 106 365 0265 Email: svtech7@naver.com	Slovenia -Croatia-Serbia-Monte Negro-Bosnia-Herzegovina-Macedonia OSSAT d.o.o. Phone: +386 31 267 537 Email: ossat.doo@gmail.com
Spain Eurotech System, S.L. Phone: +34 649 983 301 Email: t.vidal@eurotechsys.com	Thailand I Robot Phone: +66 2732 0082 Email: nikaziz@irobot.co.th	Turkey iROB İleri Robot Otomasyon ve Bilgi Teknolojileri Phone: +90 224 443 6343 Email: yalcin.eroglu@irob.com.tr
UK Billington Group Phone: +44 1709 543837 Email: warren@billington-group.co.uk	USA - Canada Essential Robot Products, Inc. Phone: +1 574 271 7895 Email: josh.haag@robot-pros.com	