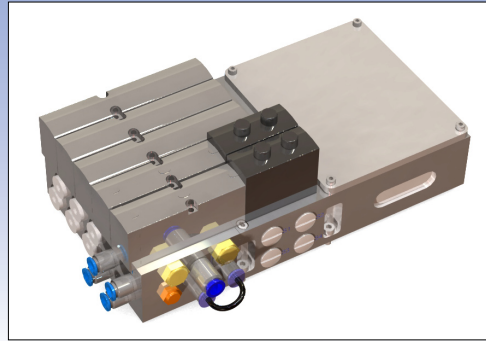
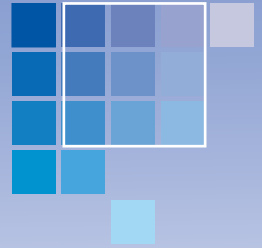


Large Valve Units



Valve units

To simplify the customer installation of the robot the RSP valve unit has a built in electrical connection box with all signals connected. The unit has a contact for tool signals connection and as an option the unit can be configured with a customer cable for any robot.

Valves

The valve unit can handle up to five standard ISO valves where one of the valves can be configured as a tool changing valve. This valve comes with a two way signal safety interface and shuts off the air supply to the other valves when the tool changer is opened.

Options

Signal cables are available for all robot types. The signal cable connects the valve unit to the robot customer interface. Cabling from the valve unit out to the gripper is available as well.

Bus communication can be integrated for valves and gripper signalling.

The valve unit can be equipped with a sensor interface for external equipment. Four M12-contacts is then available at the side of the valve unit.

Integrated vacuum ejectors can be fitted at any of the control valve positions and the option includes vacuum ejector, control valve and vacuum sensor.

The vacuum saver option controls the vacuum ejector and shuts off the ejector when desired vacuum is reached. When vacuum level is low the ejector automatically starts. This reduces the air consumption and noise level radically. Up to four vacuum ejectors can be controlled separately.

Technical data

| | |
|-------------------|--------------------|
| Max air pressure | 10 bar |
| Max air flow: | |
| Tool change valve | 900l/min |
| Control valves | 1100l/min |
| Valve type: | |
| Tool change valve | Double mono stable |
| Control valves | Bi stable |
| Mounting flange | ISO 15407-2 |

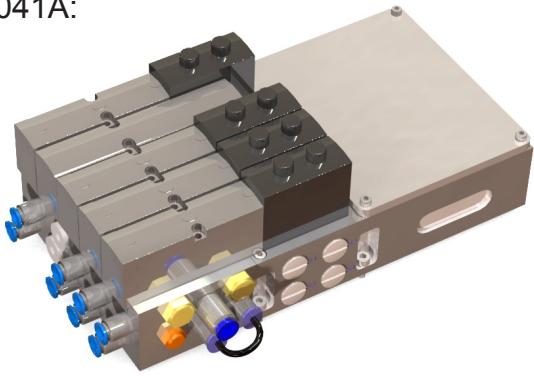
Options

| | |
|-------------------|----------------|
| Connection cables | Robot specific |
| Profibus | P0046 |
| DeviceNet | P0047 |
| Interbus | P0048 |
| Can Open bus | P0049 |
| Sensor interface | P0056A |
| Vacuum ejector | P9102 |
| Vacuum saver | P9103 |

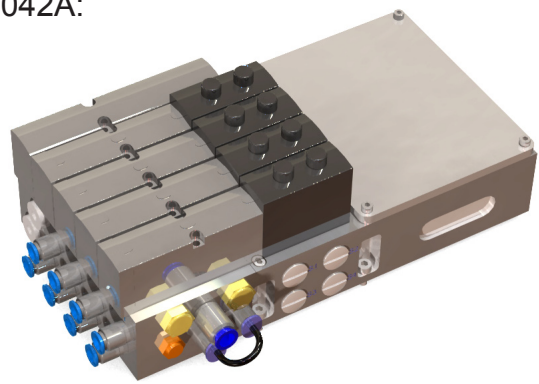
Technical spec

| Part no. | P0040A | P0041A | P0042A | P0043A | P0044A | P0045A |
|-------------|--------|--------|--------|--------|--------|--------|
| Valves | - | 4 | 4 | 5 | 2 | 2 |
| Air chanel | - | 8 | 8 | 10 | 4 | 4 |
| TC function | - | Yes | No | Yes | Yes | No |

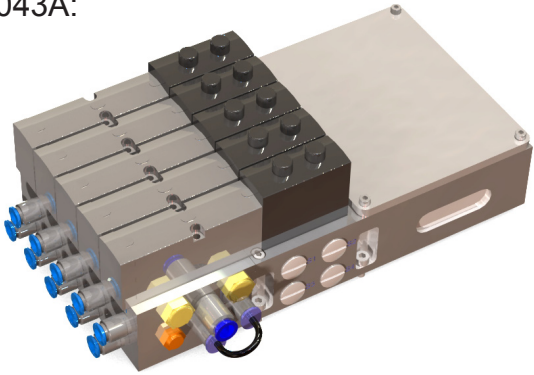
P0041A:



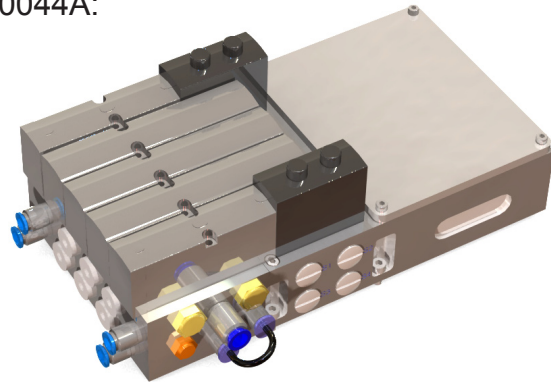
P0042A:



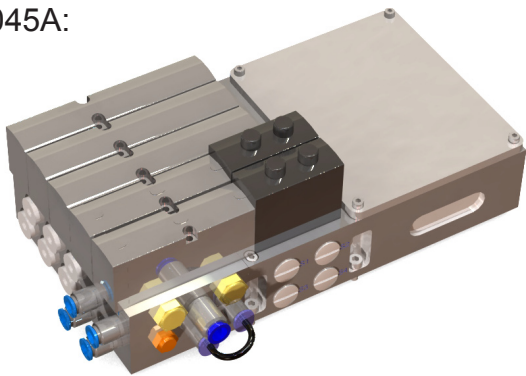
P0043A:



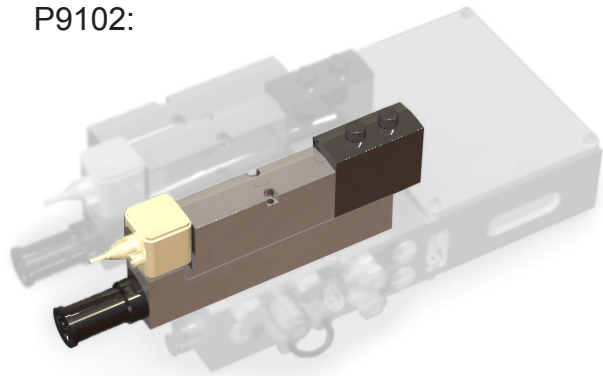
P0044A:



P0045A:



P9102:



B0412-1 Mar 2009

Robot System Products offer complete, standardised media supply solutions for robot-based automation. We design, manufacture, and market a wide range of standard robot peripherals such as tool changers, swivels, hose packages, vacuum grippers and die-casting systems throughout the world.

Visit us at www.robotsystemproducts.com

