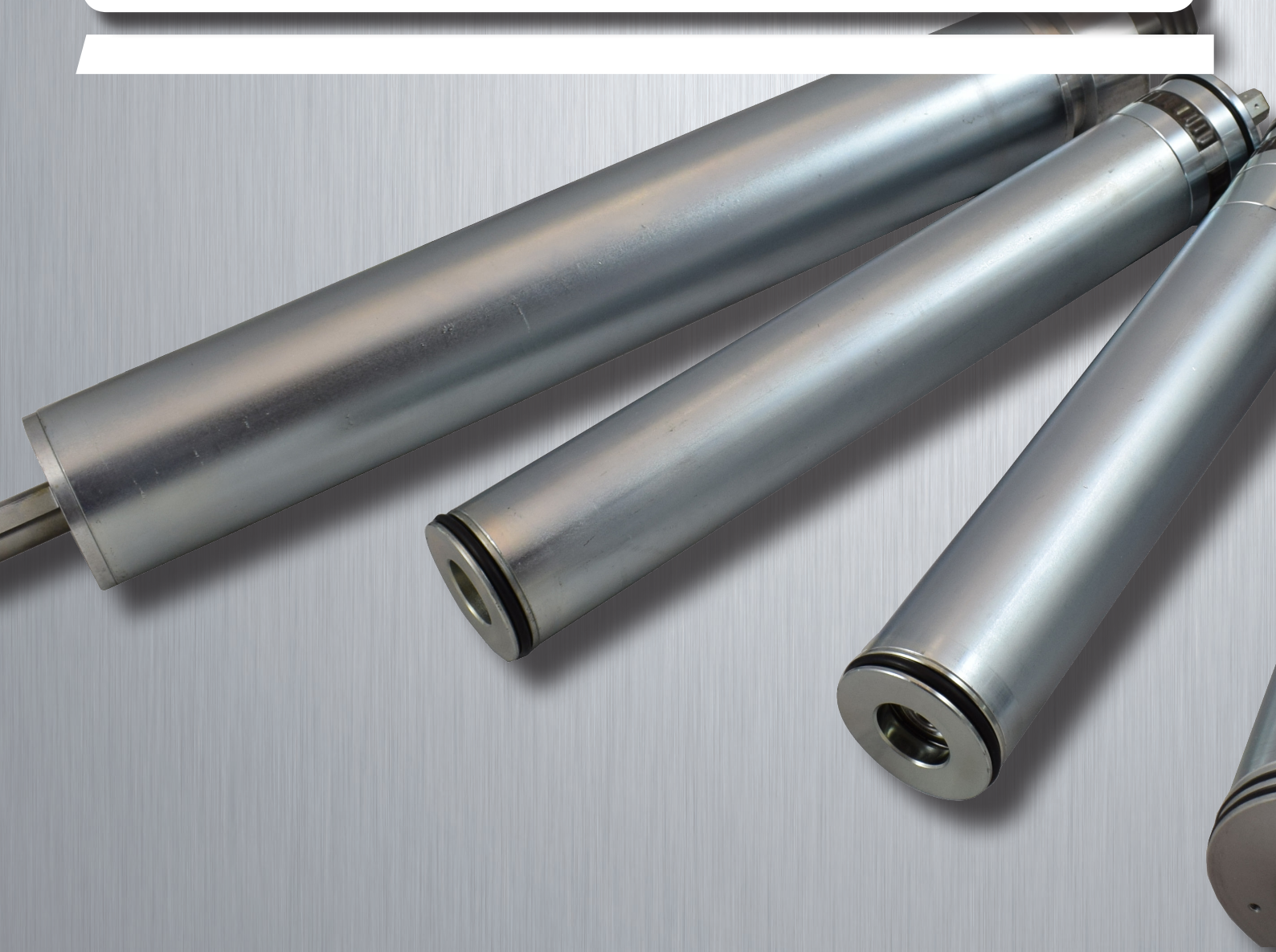


# ***MTR - GEARLESS MOTORROLLER***

*INNOVATION IN INTRALOGISTIC SMART SOLUTION*







# ***MTR - GEARLESS MOTOROLLER***

*INTRODUCING THE FUTURE  
IN SORTING AND MATERIAL  
HANDLING TECHNOLOGY*

Motor Power Company  
[www.motorpowerco.com](http://www.motorpowerco.com)  
[info@motorpowerco.it](mailto:info@motorpowerco.it)

All rights reserved.  
Complete or partial reproduction  
is not allowed without our permission.

All technical data in this catalog  
may be changed without prior notice.

SEE IT BEFORE IT HAPPENS

**MOTOR  
POWER**  
COMPANY

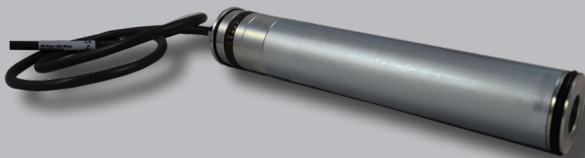
*COMPLETE TECHNOLOGICAL  
INNOVATION IN MOVEMENT*



**M**otor Power Company keeps developing new concepts in sorting and material handling. Our goal is sharing with the market our domain expertise in intralogistics; innovative solutions through our gearless technology products. We propose motion control bundles composed by gearless motorollers and smart drives. All our solutions are in-house developed and are particularly oriented for control, movement, storage and protection of materials and products throughout manufacturing, sorting, warehousing, distribution, consumption and disposal. Motor Power Company specialises in the design, development and manufacturing of high performance industrial motion solutions. We have acquired consolidated expertise and technical know-how from 30 years experience with all kinds of applications and through our continuous commitment to research and development. This allows us to partner leading international companies in the supply of products and solutions for automation and motion control.

## ***The motoroller series at a glance***

### ***Gearless motoroller 46 - cartridge version*** ***800rpm@24-48 Vdc***

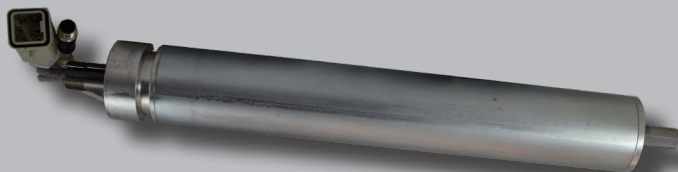


Frameless gearless cartridge motoroller for general conveyor applications. Suitable for 50mm roller tube integration, roller tube range available on request

#### ***Features***

- » Two models
- » Rated power 50 Watt and 115 Watt
- » Rated torque 0,6 Nm and 1,35 Nm
- » Hall sensors and encoder feedback for higher precision
- » Cartridge diameter 46 mm suitable for all 50 mm diameter tube
- » 24 and 48Vdc power supply
- » Full speed control
- » Wide roller customization

### ***Gearless power pack motoroller 60*** ***800rpm@60 Vdc***



Tube equipped gearless motoroller for cross belt driving and controlling.

#### ***Features***

- » Ready to use motoroller 60mm diameter
- » Rated power 235 Watt
- » Rated torque 2,8 Nm
- » 60Vdc power supply
- » Full speed control

### ***Gearless motoroller 76*** ***Cartridge version*** ***800rpm@48-65 Vdc***



Gearless cartridge motoroller for cross belt driving and controlling. Suitable for 80mm roller tube integration, roller tube range available on request

#### ***Features***

- » Rated power 260 Watt
- » Rated torque 3,1 Nm
- » Encoder feedback for higher precision
- » Cartridge diameter 76 mm suitable for all 80 mm diameter tube
- » 48 and 65 Vdc for power supply
- » Full speed control
- » Wide roller customization

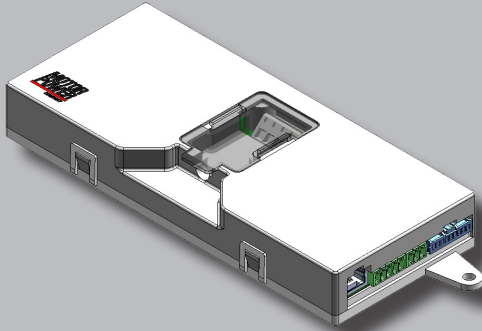
SEE IT BEFORE IT HAPPENS

**MOTOR  
POWER**  
COMPANY



# The drive series at a glance

## DMR 50-5/50 dual axes drive



The perfect matched drive for enhancing motoroller 46 features

### Features

- » Dual axes operation
- » 24 and 48 Vdc operating supply voltage
- » Encoder and Hall Sensor feedback
- » CanOpen Fieldbus
- » RS485 programming interface
- » I/O programmability for speed, start and stop control



## Lite Pro drive

Lite Pro drive is ideal for controlling motoroller 60

### Features

- » 24 and 48 Vdc operating supply voltage
- » Encoder and Hall Sensor feedback
- » CanOpen Fieldbus
- » I/O programmability for speed, start and stop control

## DMR 76-10/65



Motoroller 76 matches drive DMR 76-10/65 for the perfect bundle

### Features

- » 24 and 65 Vdc operating supply voltage
- » Encoder and Hall Sensor feedback
- » Profibus Fieldbus
- » I/O programmability for speed, start and stop control
- » I/O programmability for speed, start and stop control
- » I/O proxy dual loop

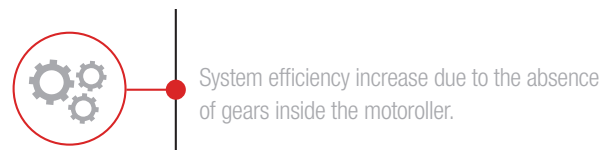
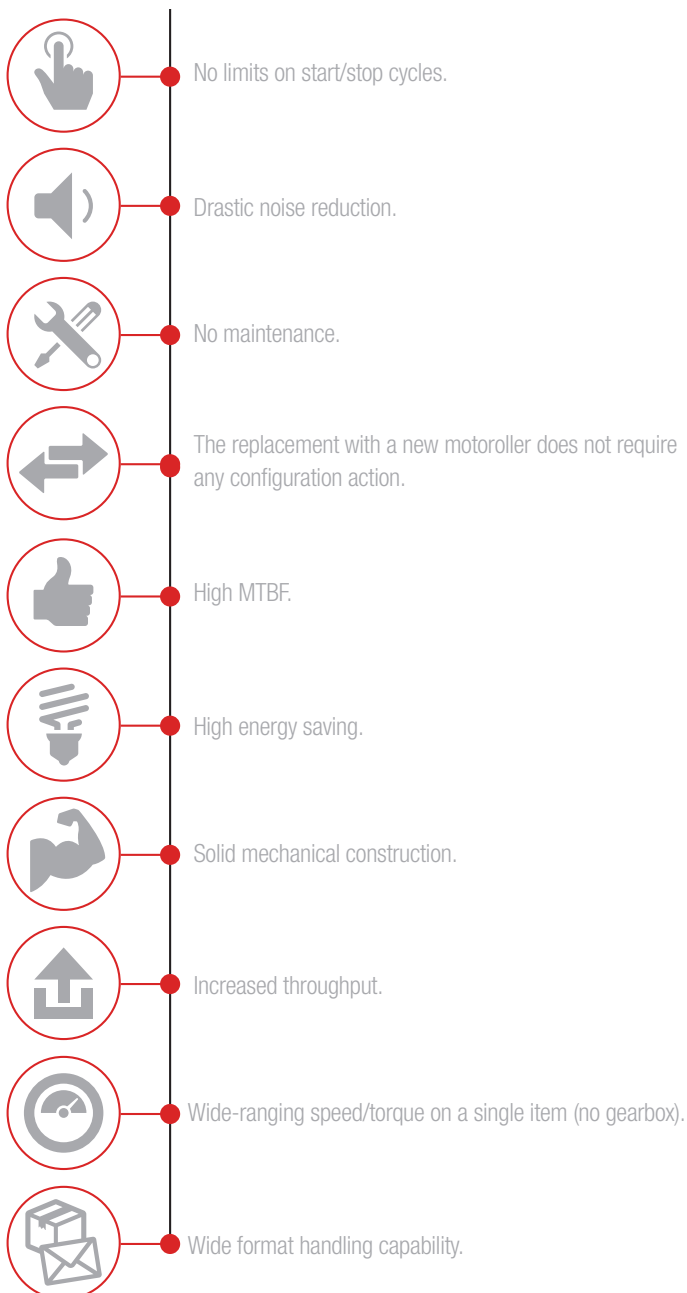
SEE IT BEFORE IT HAPPENS

**MOTOR  
POWER**  
COMPANY

# Gearless motorollers and drives.

## Increased efficiency and limitless performances

Motor Power Company introduces these perfect matched bundles constituted by gearless motorollers and smart drives. Everything has been conceived as a specific product for conveyor, crossbelt or any roller transfer systems. Two versions are proposed; **frameless cartridges** without tube, to be inserted into the roller to be moved, and **power pack** version, a ready to use motoroller embedded in its own tube. The technology on which the motor is based comes from the direct drive torque motors. Consequently, the motion is transmitted directly from the motoroller to the load, without any gears.



Motoroller without gears ensures:

- > **High MTBF**, as the motoroller needs less components than the standard kinematic chain
- > **System efficiency increase** due to the absence of gears inside the motoroller
- > **Accuracy**, due to the feedback reliability
- > **High dynamic** thanks to the direct drive technology
- > **Easy replacement**, with the autotuning system of DMR Drives, the substitution with a new motoroller does not require any configuration action
- > **Easy commissioning**, due to a unique part number, there are no different gearbox ratios to handle according to different speed needs.
- > **Wide speed availability**, one motoller for all speed range

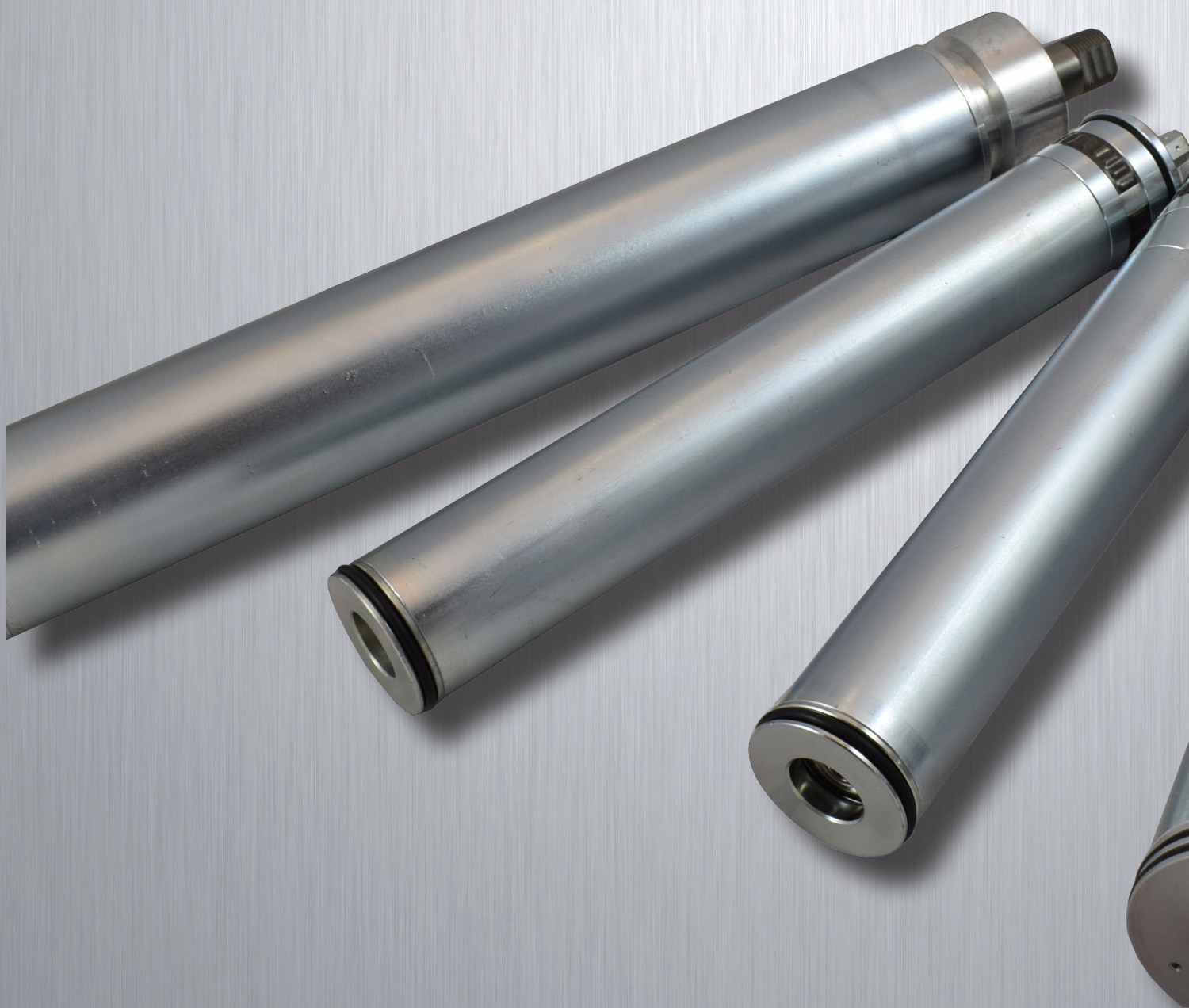
SEE IT BEFORE IT HAPPENS

**MOTOR  
POWER**  
COMPANY



SEE IT BEFORE IT HAPPENS

**MOTOR  
POWER**  
COMPANY



**MOTOROLLER Frameless - gearless cartridge only**

MTR FL 46 140 13 H1 D0 XXX

Model

Size

Winding

Feedback

Connection

Optional

1

2

3

4

5

6

1

Model

MTR FL 46

MTR FL 76



2

Size

**MTR FL 46**

75 - 140

**MTR FL 76**

100

3

Winding

**MTR FL 46**

06 (\*) - 13

(\*) winding 06 for MTR FL 46 only

**MTR FL 76**

14

4

Feedback

**H1** Hall Sensor

**E1** Incremental encoder ABZ - 3584 cpr

5

Connection

**D0** - cable output with connectors



# MOTOROLLER Power Pack - gearless motoroller with tube

MTR PP 76 100 14 H1 D0 01 - 80 - XXX

Model

Size

Winding

Feedback

Connection

Fixed shaft

Tube type

Tube lenght

Indle shaft

Optional

1

2

3

4

5

6

7

8

9

10

1

Model

MTR PP 46

MTR PP 60

MTR PP 76

2

Size

**MTR PP 46**

75 - 140

**MTR PP 60**

150

**MTR PP 76**

100

3

Winding

**MTR PP 46**

06 (\*) - 13

(\*) winding 06 for MTR PP 46 only

**MTR PP 60**

21

**MTR PP 76**

14

4

Feedback

**H1** Hall Sensor

**E1** Incremental encoder ABZ - 3584 cpr

5

Connection

**D0** - cable output with connectors

6

Fixed shaft

**01** - Male tread

7

Tube type(\*)

**01** - Standard tube

**02** - Double grooved tube

**03** - Conveyor belt tube

**04** - Poly-V pulley tube

**05** - Double grooved pulley tube

**06** - Tapered sleeves tube

**07** - Double grooved and tapered sleeves tube

**08** - Poly-V and tapered sleeves tube

**09** - Double grooved pulley and tapered sleeves tube

(\*) for MTR PP 46 only

8

Tube lenght(\*)

Lenght in mm

(\*) For MTR PP 60 lenght is fixed

9

Indle shaft(\*)

**AA:** hex spring loaded

**AB:** female thread

**AC:** poly-V hex spring loaded

**AD:** poly-V thread

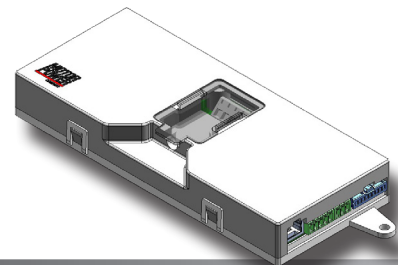
(\*) for MTR PP 46 only



SEE IT BEFORE IT HAPPENS

**MOTOR  
POWER**  
COMPANY

### DMR 50-5/50 DRIVE TYPE



Drive Name	Model	Feedback	Fieldbus
DMR	50-5/50	E	65
	1	2	3

- 1 Drive model 50-5/50
- 2 Feedback  
H = Hall sensor  
E = Incremental encoder
- 3 Fieldbus  
C = CANopen

### DMR 76-10/65 DRIVE TYPE



Drive Name	Model	Feedback	Fieldbus
DMR	76-10/65	E	65
	1	2	3

- 1 Drive model 76-10/65
- 2 Feedback  
H = Hall sensor  
E = Incremental encoder
- 3 Fieldbus  
P = Profibus

### LITE PRO DRIVE TYPE



Drive Name	Feedback	Model	Fieldbus
LPRO	E	40	C
	1	2	3

- 1 Feedback  
E = Hall sensor and encoder
- 2 Model (output current) Arms  
40 = 8/24
- 3 Fieldbus  
C = CANopen



# MOTOROLLER 46 RATINGS AND SPECIFICATIONS

TIME RATING  
INSULATION CLASS  
ENCLOSURE  
THERMAL PROTECTION  
CE certified

Continuous  
F  
Totally enclosed. Self-cooled  
NTC

AMBIENT TEMPERATURE  
AMBIENT HUMIDITY  
POLES  
INSULATION SYSTEM UL /CSA

0 to 40 °C  
5 to 85% (non-condensing)  
28  
cURus , DV155J File nr.:E216686

## Motoroller 46 75 06    Motoroller 46 75 13    Motoroller 46 140 13

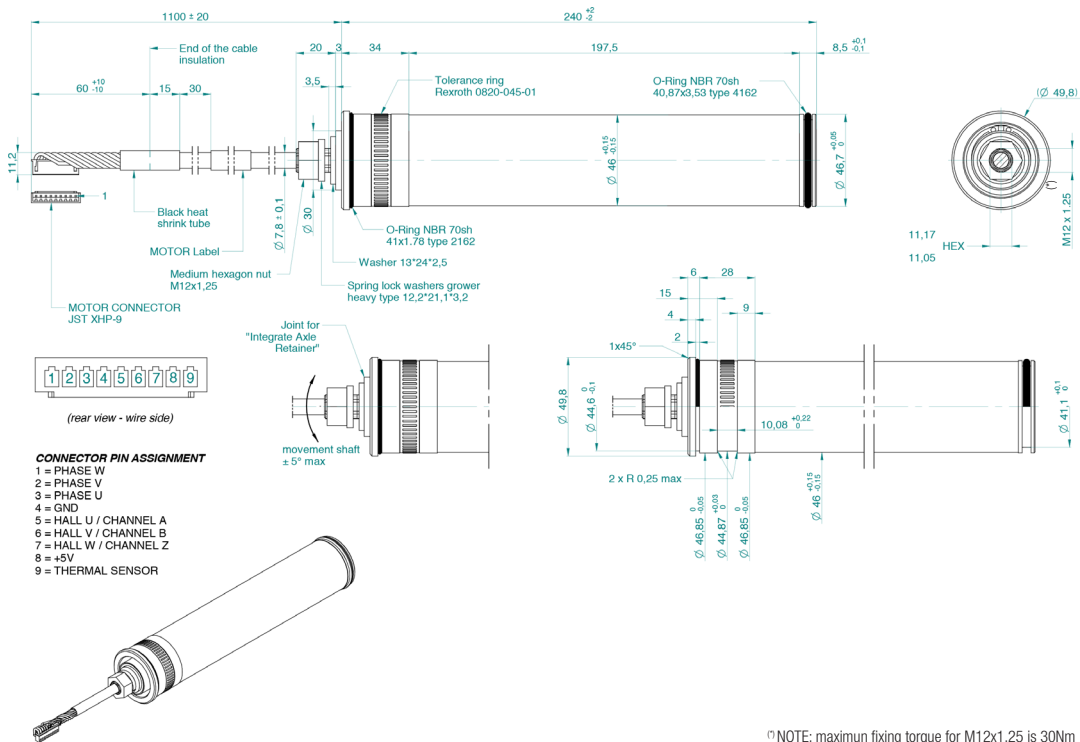
Stall torque	Cn0	Nm	0,74	0,74	1,5
Peak torque	Cpk	Nm	2,2	2,2	4,5
Rated torque	Cn	Nm	0,6	0,6	1,35
Rated working speed	nM	rpm	800	800	800
Maximum working speed @ 24Vdc	nmax	rpm	1000	500	500
Maximum working speed @ 48Vdc	nmax	rpm	1150	1150	1000
Rated output power	Pn	W	50	50	115
Stall current	In0	Arms	3,3	1,63	3,3
Peak current	l <sub>pk</sub>	Arms	11	5,71	10,61
Rated current	In	Arms	2,7	1,33	3
Torque constant ±10%	Kt	Nm/Arms	0,22	0,45	0,45
Voltage constant ±10%	Ke	Vrsm/Krpm	13,6	27,6	27,6
Phase/phase resistance ±10% @25°C	Rff	Ohm	0,77	2,64	1,23
Phase/phase resistance ±10% @25°C	Lff	mH	1,35	5,4	2,81
Electrical time constant	Te	ms	1,75	2	2,3
Rotor inertia	Jm	Kg cm <sup>2</sup>	5	5	6,1
Motor weight	m	Kg	1,96	1,96	2,73
Axial shaft load @800 rpm	Fa	N		110	
Radial shaft load @800 rpm	Fr	N		220 (applied on the rotor's centering)	

SEE IT BEFORE IT HAPPENS

**MOTOR  
POWER**  
COMPANY

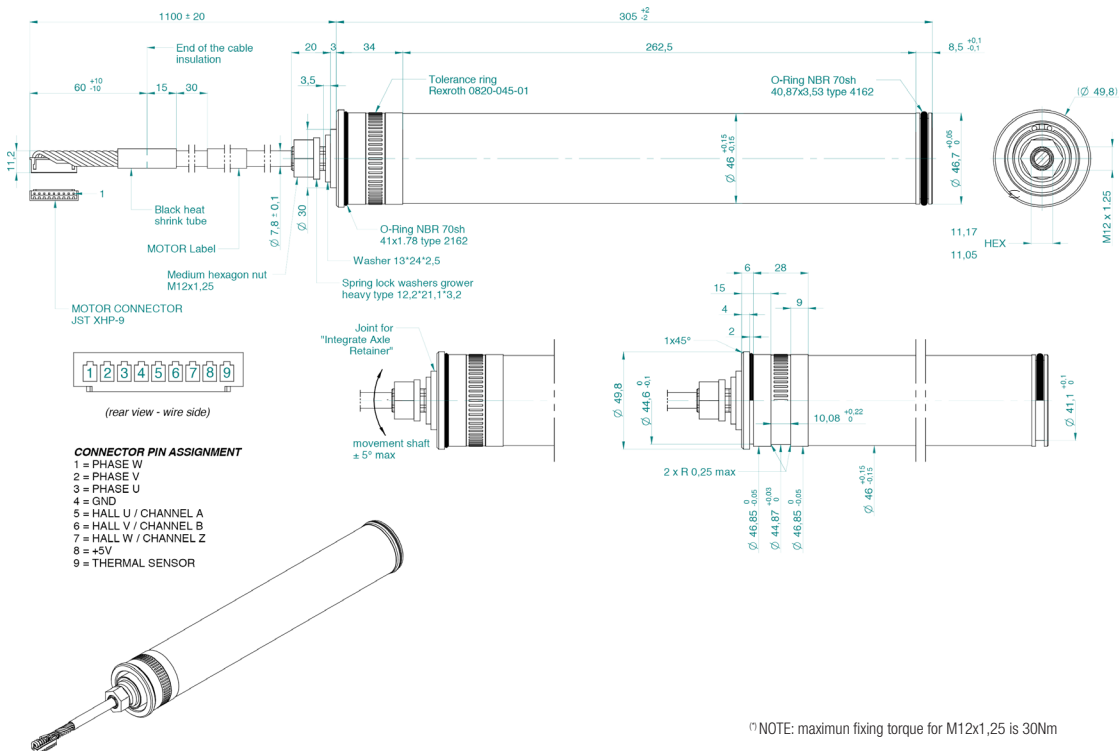
## MOTOROLLER 46 FRAMELESS DIMENSIONS

## Motoroller 46 75



(\*) NOTE: maximum fixing torque for M12x1,25 is 30Nm

## Motoroller 46 140

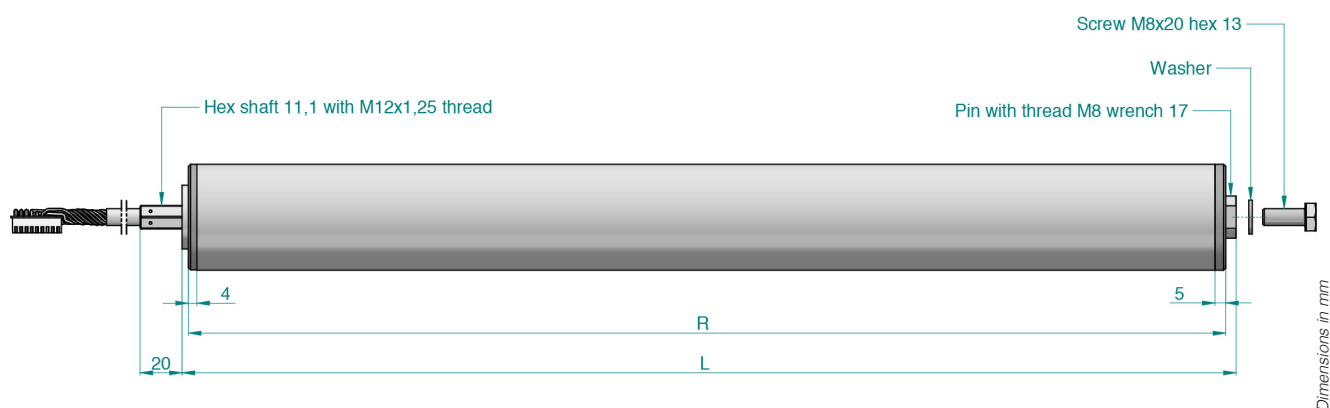


(\*) NOTE: maximum fixing torque for M12x1,25 is 30Nm

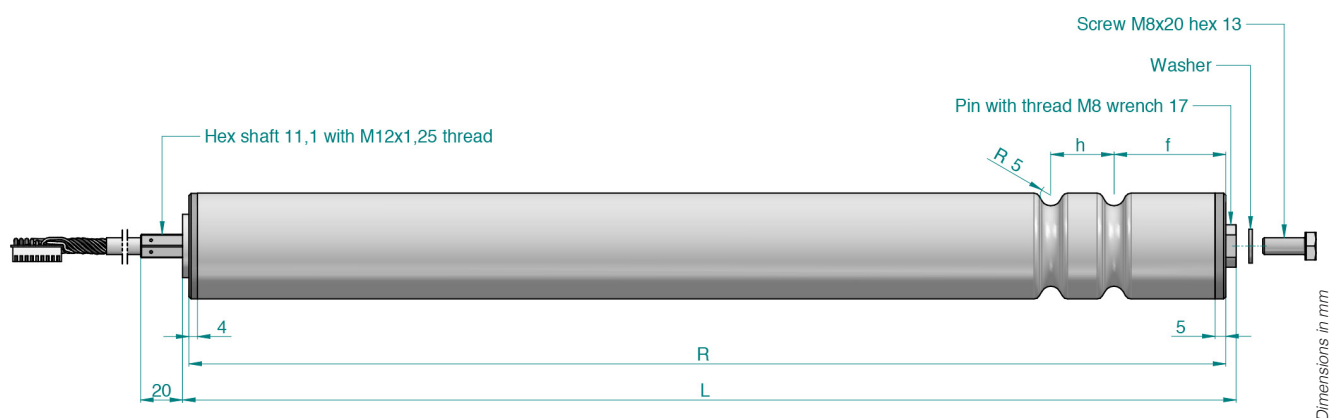


# **MOTOROLLER 46 POWER PACK TUBE TYPE**

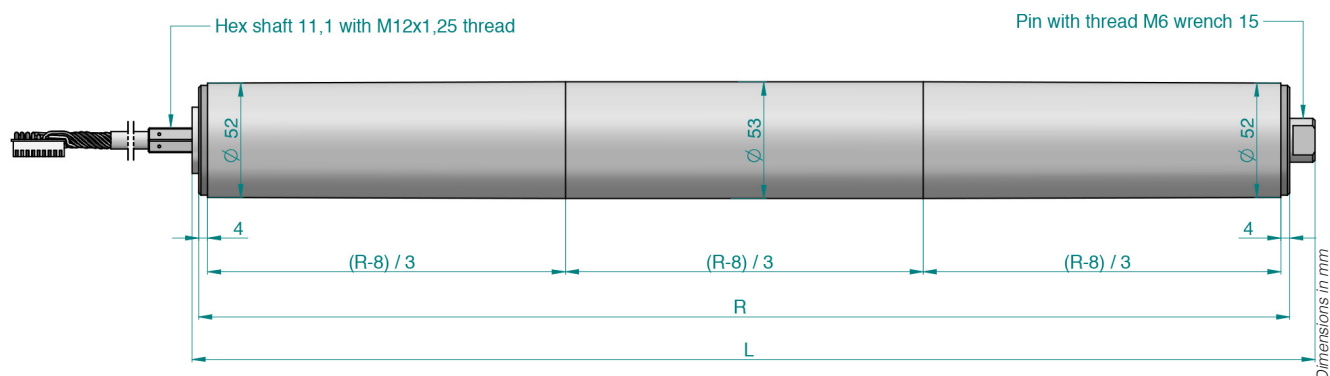
## **Motoroller 46 standard tube 01**



## **Motoroller 46 double grooved tube 02**

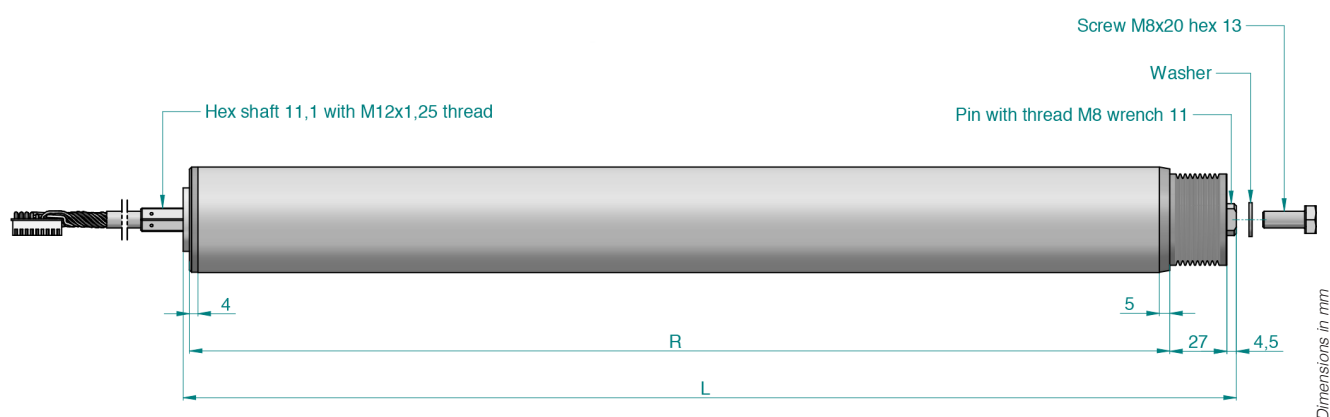


## **Motoroller 46 conveyor belt tube 03**

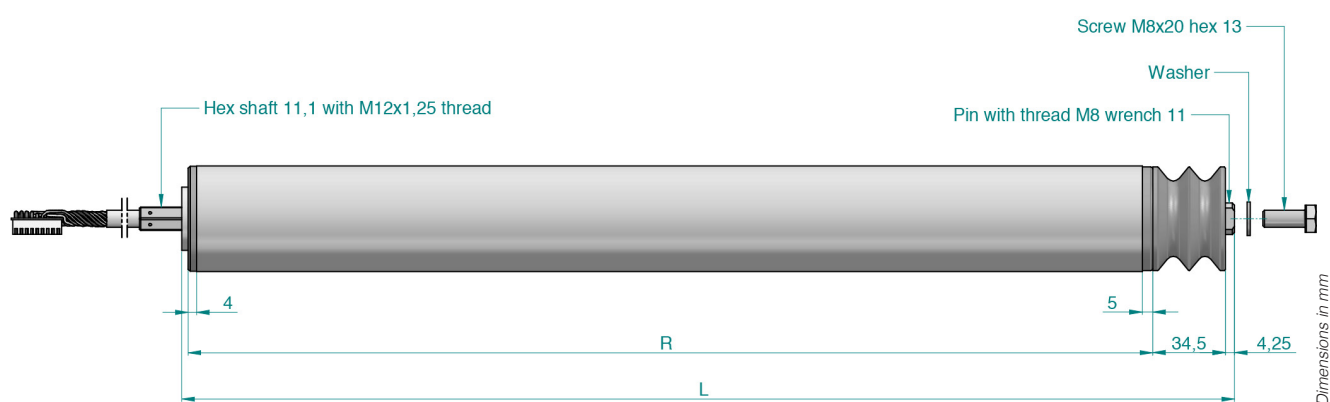


# MOTOROLLER 46 POWER PACK TUBE TYPE

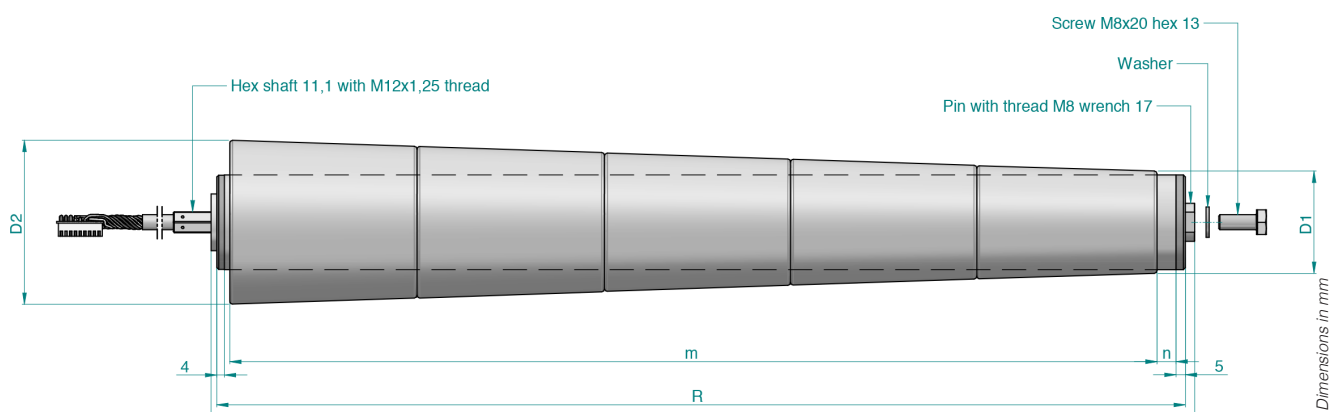
## Motoroller 46 poly-V pulley tube 04



## Motoroller 46 double grooved pulley tube 05

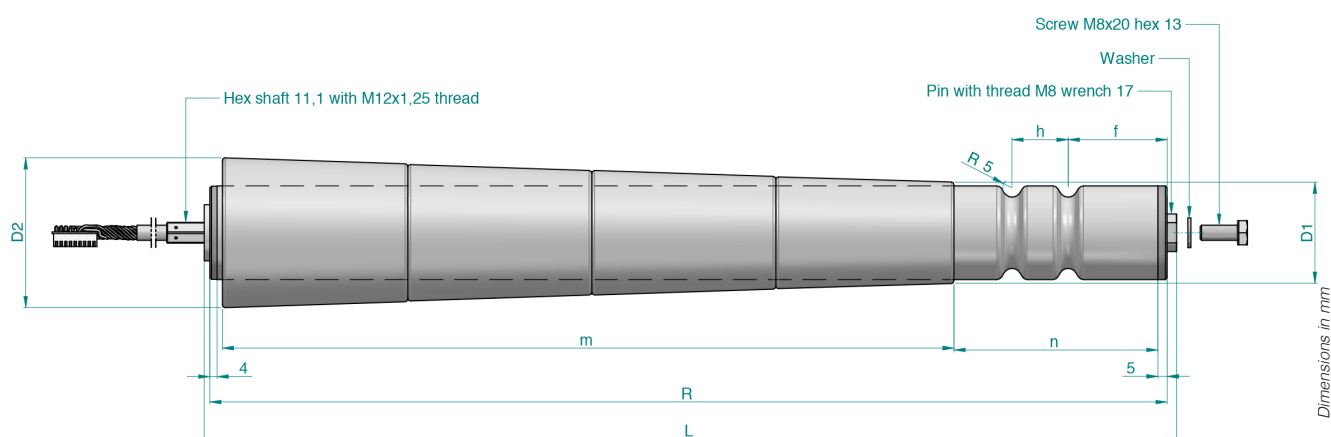


## Motoroller 46 tapered sleeves tube 06

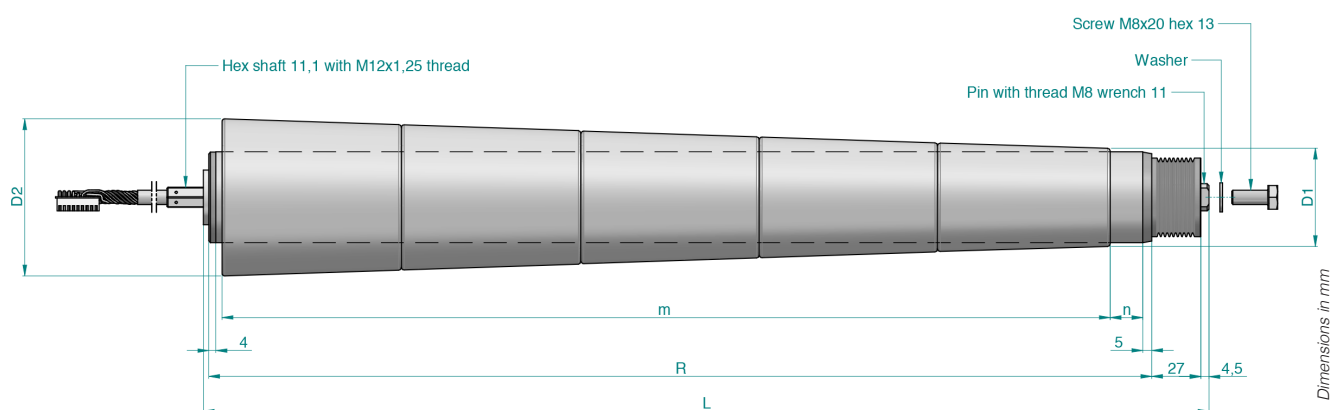


# MOTOROLLER 46 POWER PACK TUBE VERSIONS

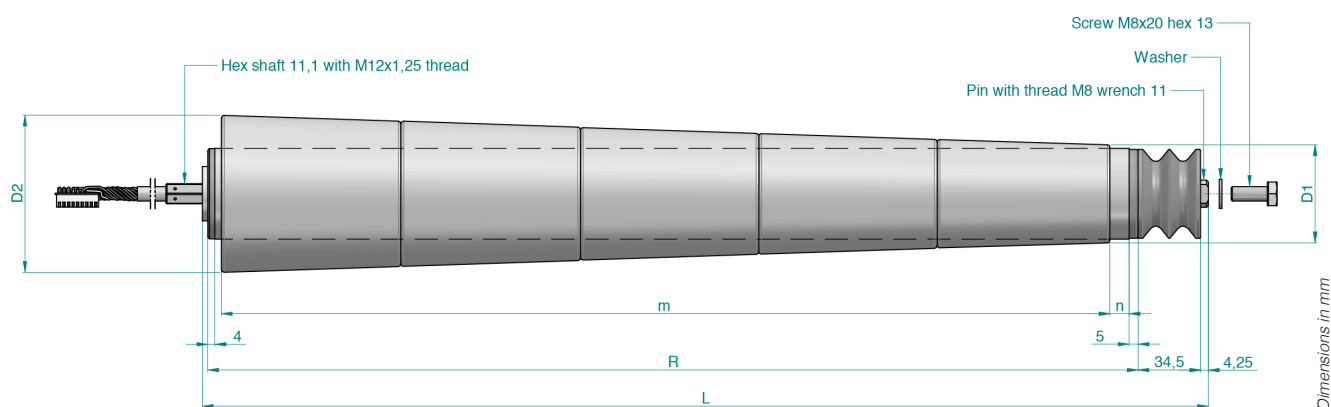
## Motoroller 46 double grooved and tapered sleeves tube 07



## Motoroller 46 poly-V pulley and tapered sleeves tube 08



## Motoroller 46 double grooved pulley and tapered sleeves tube 09



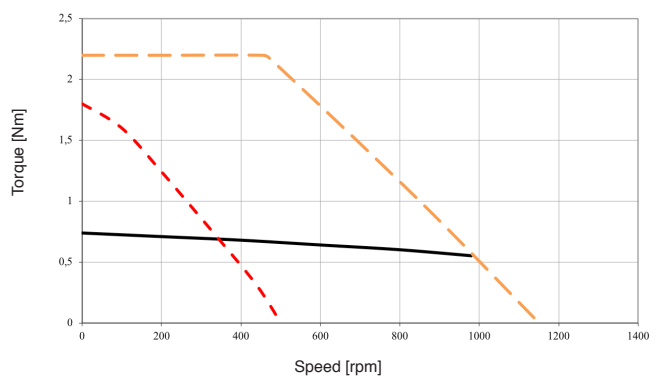
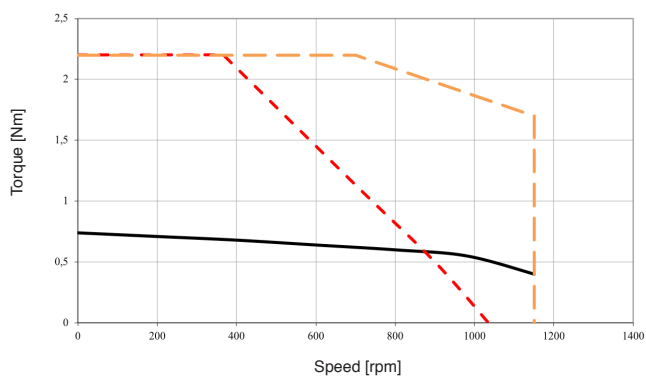


# MOTORROLLER 46 TORQUE /SPEED CHARTS

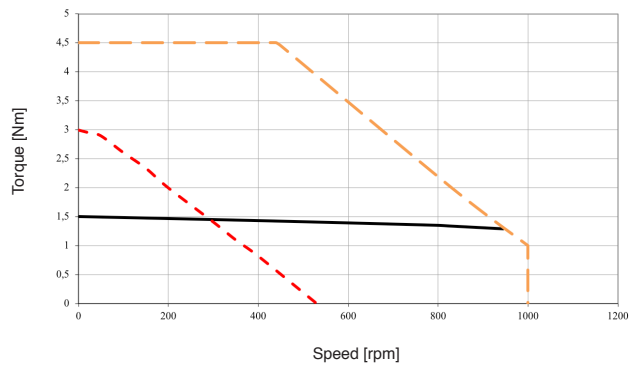


## MOTORROLLER 46 75 06

## MOTORROLLER 46 75 13

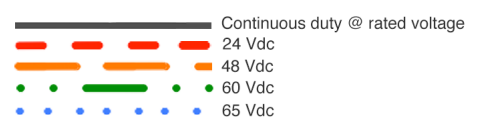


## MOTORROLLER 46 140 13



SEE IT BEFORE IT HAPPENS

**MOTOR  
POWER**  
COMPANY



## MOTOROLLER 60 RATINGS AND SPECIFICATIONS

TIME RATING  
INSULATION CLASS  
ENCLOSURE  
THERMAL PROTECTION  
CE certified

Continuous  
F  
Totally enclosed. Self-cooled  
NTC

AMBIENT TEMPERATURE  
AMBIENT HUMIDITY  
POLES  
INSULATION SYSTEM UL /CSA

0 to 40 °C  
5 to 85% (non-condensing)  
28  
cURus , DV155J File nr.:E216686

### Motoroller 60 150 21

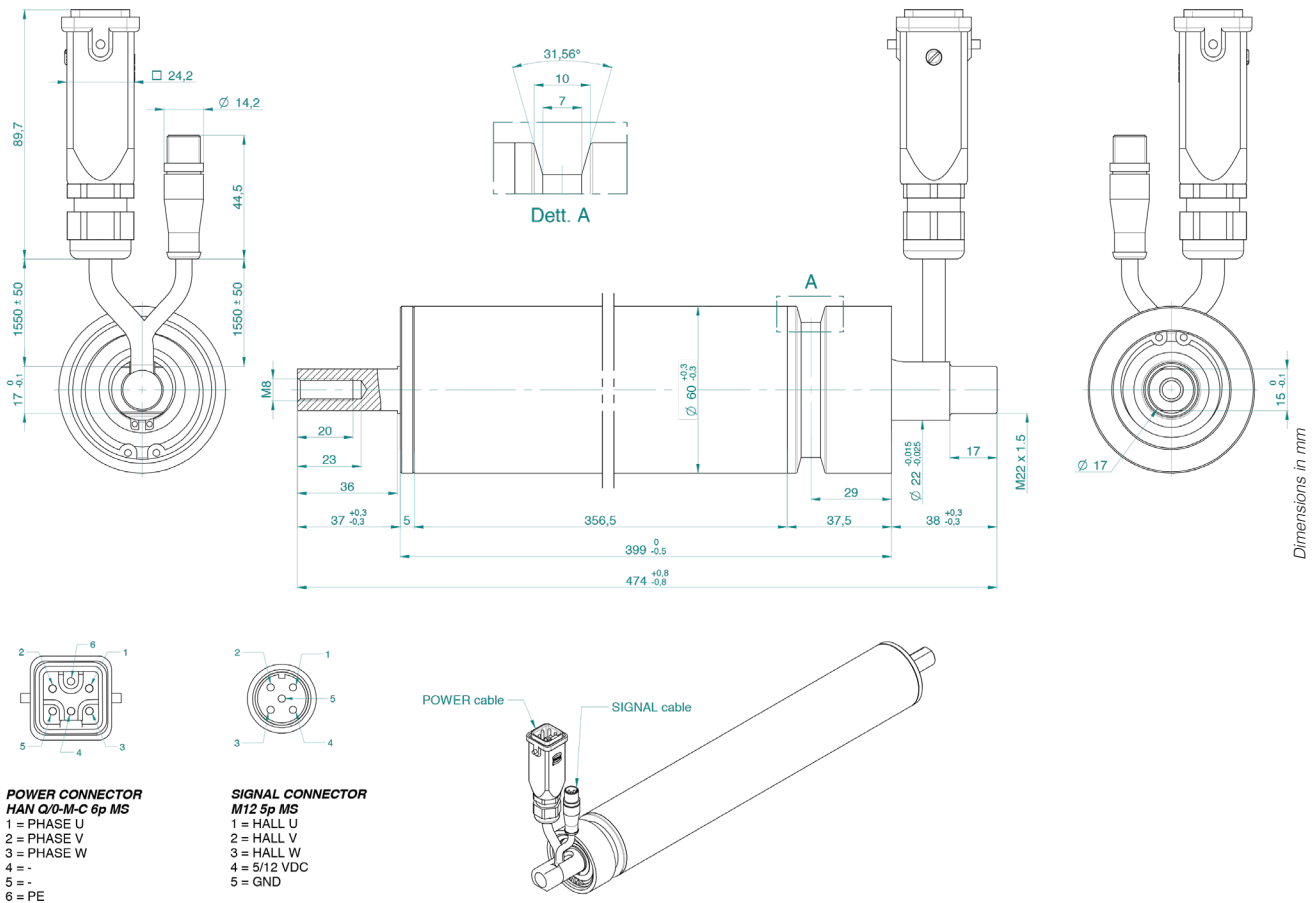
Stall torque	Cn0	Nm	3,2
Peak torque	Cpk	Nm	10
Rated torque	Cn	Nm	2,8
Rated working speed	nM	rpm	800
Maximum working speed @ 60Vdc	nmax	rpm	1200
Rated output power	Pn	W	235
Stall current	In0	Arms	6,1
Peak current	l <sub>pk</sub>	Arms	23
Rated current	In	Arms	5,2
Torque constant ±10%	Kt	Nm/Arms	0,53
Voltage constant ±10%	Ke	Vrsm/Krpm	31,8
Phase/phase resistance ±10% @25°C	Rff	Ohm	0,5
Phase/phase resistance ±10% @25°C	Lff	mH	1,8
Electrical time constant	Te	ms	3,6
Rotor inertia	Jm	Kg cm <sup>2</sup>	16,8
Motor weight	m	Kg	5,3
Axial shaft load @800 rpm	Fa	N	140
Radial shaft load @800 rpm	Fr	N	600 (applied on the rotor's centering)

SEE IT BEFORE IT HAPPENS

**MOTOR  
POWER**  
COMPANY

# MOTOROLLER 60 POWER PACK DIMENSIONS

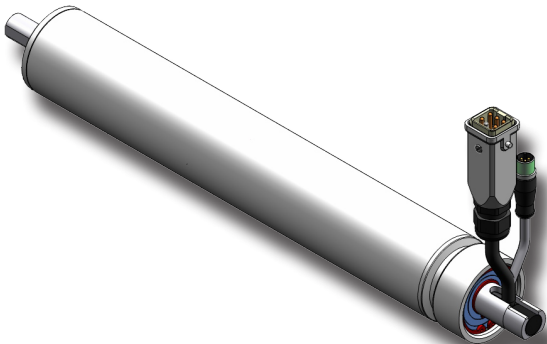
## Motoroller 60 150



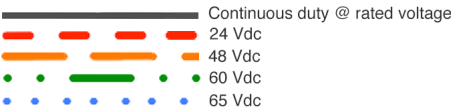
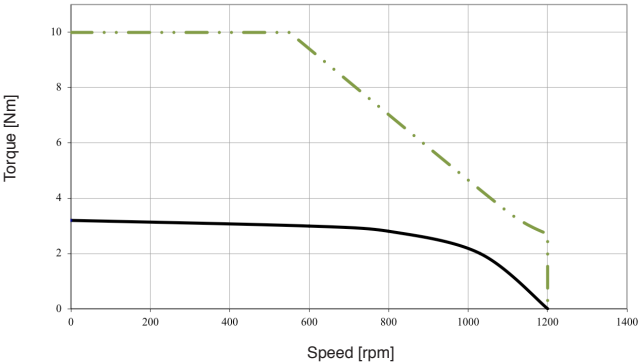
SEE IT BEFORE IT HAPPENS

**MOTOR  
POWER**  
COMPANY

**MOTOROLLER 60 TORQUE /SPEED CHARTS**



**MOTOROLLER 60 150 21**



SEE IT BEFORE IT HAPPENS





## MOTOROLLER 76 RATINGS AND SPECIFICATIONS

TIME RATING  
INSULATION CLASS  
ENCLOSURE  
THERMAL PROTECTION  
CE certified

Continuous  
F  
Totally enclosed. Self-cooled  
NTC

AMBIENT TEMPERATURE  
AMBIENT HUMIDITY  
POLES  
INSULATION SYSTEM UL /CSA

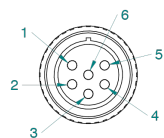
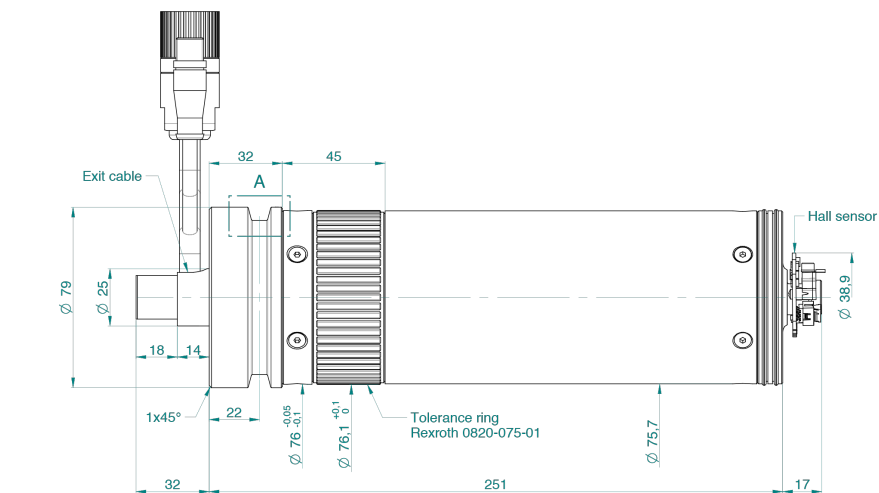
0 to 40 °C  
5 to 85% (non-condensing)  
28  
cURus , DV155J File nr.:E216686

### Motoroller 76 100 14

Stall torque	Cn0	Nm	3,6
Peak torque	Cpk	Nm	22
Rated torque	Cn	Nm	3,1
Rated working speed	nM	rpm	800
Maximum working speed @ 48Vdc	nmax	rpm	800
Maximum working speed @ 65Vdc	nmax	rpm	1000
Rated output power	Pn	W	260
Stall current	In0	Arms	6,1
Peak current	l <sub>pk</sub>	Arms	41
Rated current	In	Arms	5,2
Torque constant ±5%	Kt	Nm/Arms	0,59
Voltage constant ±10%	Ke	Vrsm/Krpm	36
Phase/phase resistance ±10% @25°C	Rff	Ohm	0,51
Phase/phase resistance ±10% @25°C	Lff	mH	0,7
Electrical time constant	Te	ms	1,37
Rotor inertia	Jm	Kg cm <sup>2</sup>	23,2
Motor weight	m	Kg	5,1
Axial shaft load @800 rpm	Fa	N	220
Radial shaft load @800 rpm	Fr	N	500 (applied on the rotor's centering)

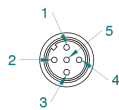
# MOTOROLLER 76 FRAMELESS DIMENSIONS

## Motoroller 76 100



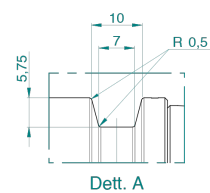
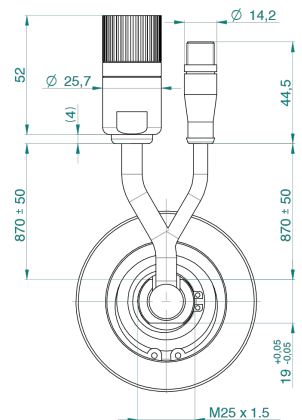
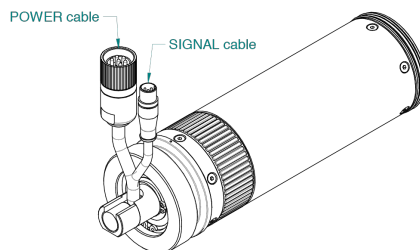
**POWER CONNECTOR**  
*Hypertac 6p MS*

- 1 = -
- 2 = PHASE U
- 3 = PHASE V
- 4 = PHASE W
- 5 = -
- 6 = PE



**SIGNAL CONNECTOR**  
*M12 5p MS*

- 1 = HALL U
- 2 = HALL V
- 3 = HALL W
- 4 = 5V
- 5 = GND

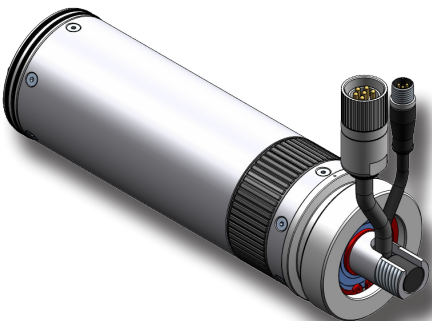


Dimensions in mm

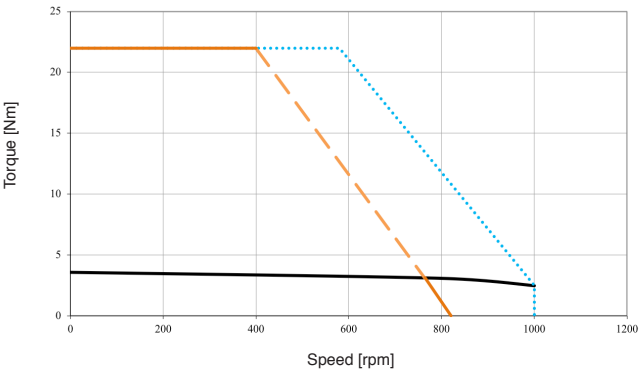
SEE IT BEFORE IT HAPPENS

**MOTOR  
POWER**  
COMPANY

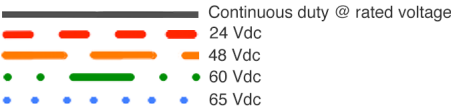
**MOTOROLLER 76 TORQUE /SPEED CHARTS**



**MOTOROLLER 76 100 14**



SEE IT BEFORE IT HAPPENS



## FEEDBACK FEATURES

### H1 HALL SENSOR

Motor size		Motoroller 46 -60- 76
Nominal Voltage	V	5-9 $\pm$ 5%
Nominal current	mA	100
Electronic type		OPEN COLLECTOR
N° of pulses revolution	ppr	84

### E1 INCREMENTAL ENCODER

Motor size		Motoroller 46 -60- 76
Nominal Voltage	Vdc	5-9 $\pm$ 5%
Nominal current	mA	100
Electronic type		OPEN COLLECTOR
Zero impulse		ONE AT A LAP
N° of pulses revolution	ppr	896
Resolution	cpr	3584



# DMR SERVO DRIVES

The DMR series is a series of customized drives dedicated to logistic automation market.

The series features two models: DMR 50-5/50 and DMR76-10/65, designed and manufactured for driving gearless motorollers, exploiting its technological advantages based on direct drive without any gear for motion transmission.

## DMR 50-5/50 FEATURES

- > **DUAL AXES OPERATION CAPABILITY**
- > **PERFECT MATCH WITH GEARLESS MOTOROLLER MTR46**
- > **I/O PROGRAMMABILITY**
- > **FUSE PROTECTION**
- > **CROSSBELT FUNCTIONALITY**
- > **CONVEYOR FUNCTIONALITY**
- > **SPEED AND ACCELERATION PROGRAMMABILITY**
- > **HALL SENSOR AND ENCODER FEEDBACK**
- > **DMR BROWSER SOFTWARE INTERFACE**
- > **RS 485 PROGRAMMING INTERFACE**
- > **CAN OPEN FIELDBUS**
- > **PHOTO EYE SUPPORT**
- > **2 INPUT, 2 OUTPUT RELAY EACH AXIS**



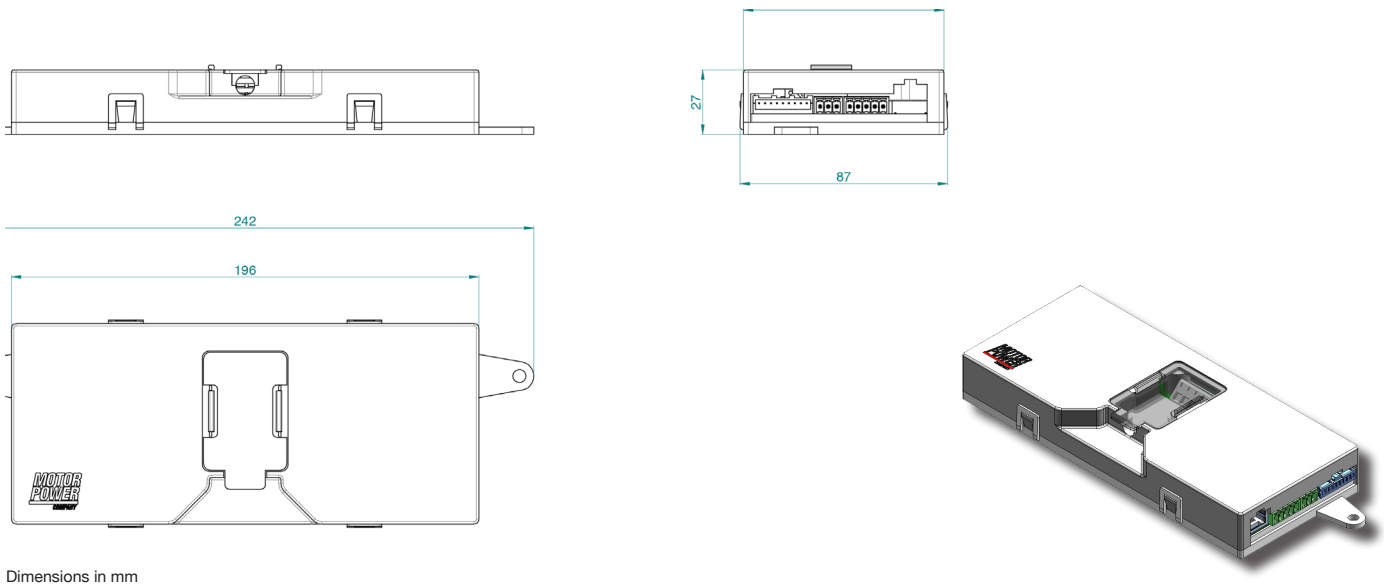
## DMR 50-5/50 PRODUCT DATA

FEATURE	UNITS	DMR 50-5/50
Rated output power	W	180 each axis
Efficiency at rated power	%	>95
Operating supply voltage	Vdc	12-60
Typical supply voltage	Vdc	48
Maximum operating voltage	Vdc	80
Auxiliary supply voltage		24 V (8-30)
Rated output current	Arms	5
Peak output current	Arms	15
Peak time	s	3
PWM switching frequency	kHz	16 kHz
Maximum output frequency	Hz	<600
Commutation		Sinusoidal and space vector
Dimensions	WxDxH mm	196x70x27
Working temperature	°C	-20 ÷ +55
Storage temperature	°C	-40 ÷ +75
Humidity	%	85% not condensing
Altitude without derating	m	1000
IP protection	IP	20

SEE IT BEFORE IT HAPPENS



## DMR 50-5/50 PRODUCT DIMENSIONS



## DMR 50-5/50 PRODUCT DATA

### MOTOR CONNECTION

PIN	NAME
1	Phase U
2	Phase V
3	Phase W
4	Thermal sensor
5	Power supply 5V
6	0V
7	Hall U/Inc A
8	Hall V/Inc B
9	Hall W/Inc Z

### PHOTO EYE INPUT

PIN	NAME
1	24V
2	GND
3	Photo eye input

### POWER CONNECTION

PIN	NAME
1	24V logic
2	0 V
3	48 V power

### I/O DEFINITION

PIN	DIRECTION	FUNCTION
1	Input	Enable
2	Input	Dir
3	Input	Analog Input
4	Output	Fault
5	Output	Configurable

# DMR SERVO DRIVES

DMR 76-10/65 HP is a digital drive for motorrollers in cross belt applications. Main features of this drive are current digital control achieved with the technique of vector space and updated with a 10 kHz frequency. Speed digital loop with proportional-integral compensator updated with 10 kHz frequency. Position digital loop with proportional compensator and handling of dead zone updated with 10 kHz frequency. Digital Profibus interface for connecting to supervisor PLC. Motor feedback interface via Hall sensors.

## DMR 76-10/65 FEATURES

- > THE PERFECT MATCHED DRIVE FOR GEARLESS MOTORROLLER
- > DMR BROWSER SOFTWARE INTERFACE
- > FUSE PROTECTION
- > CROSSBELT FUNCTIONALITY
- > SPEED AND ACCELERATION PROGRAMMABILITY
- > HALL SENSOR AND ENCODER FEEDBACK
- > 2 INPUT, 2 OUTPUT RELAY
- > USB PROGRAMMING INTERFACE
- > PROFIBUS FIELBUS DP V1
- > I/O PROGRAMMABILITY
- > I/O PROXY DUAL LOOP



## DMR 76-10/65 PRODUCT DATA

FEATURE	UNITS	DMR 76-10/65
Rated output power	W	650
Efficiency at rated power	%	>95
Operating supply voltage	Vdc	24-80
Typical supply voltage	Vdc	48-65
Maximum operating voltage	Vdc	85
Auxiliary supply voltage		-
Rated output current	Arms	10
Peak output current	Arms	50
Peak time	s	0,75 on 20s
PWM switching frequency	kHz	16 kHz
Maximum output frequency	Hz	<600
Commutation		Sinusoidal and space vector
Dimensions	WxDxH mm	250x150x45
Working temperature	°C	-20 ÷ +55
Storage temperature	°C	-40 ÷ +75
Humidity	%	85% not condensing
Altitude without derating	m	1000
IP protection	IP	54 on drive front 40 on the whole drive

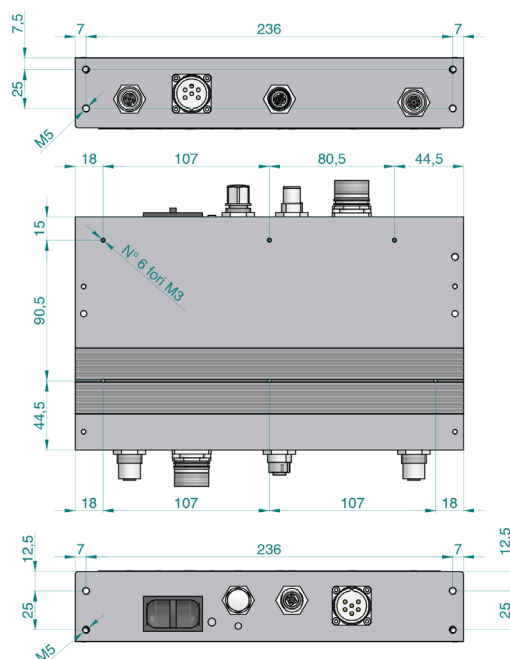
SEE IT BEFORE IT HAPPENS



## DMR 76-10/65 PRODUCT DATA

- > **ONE ELECTRONIC BOARD FOR CONTROL LOGIC AND POWER**
- > **ONE SUPPLY FOR ELECTRONIC CONTROL AND MOTOR OUTPUT STAGE**
- > **PROFIBUS SLAVE COMMAND INTERFACE WITH DIP SWITCH NODE ADDRESS SELECTION**
- > **USB DEVICE INTERFACE FOR CONFIGURATION AND MAINTENANCE**
- > **CONTROL THROUGH SINUSOISAL ALGORITHM AND HALL SENSOR FEEDBACK**
- > **GENERIC I/O PROGRAMMABILITY**
- > **I/O PROXI PROGRAMMABILITY**

**> THIS DRIVE IS EQUIPPED WITH SOFTWARE USER INTERFACE "DMR BROWSER" FOR OPERATING, MONITORING AND SUPERVISION OF THE APPLICATION. REFER TO THE APPROPRIATE MANUAL FOR INSTALLATION INSTRUCTIONS AND USE.**

[illegible]

**MOTOR  
POWER**  
COMPANY



# DMR 76-10/65

## CONNECTION

### DRIVE POWER

PIN	NAME
1	V+
2	-
3	-
4	-
5	V-
6	-

### PROFIBUS IN

PIN	NAME
1	-
2	DATA-/A-LINE
3	-
4	-
5	DATA+/B-LINE

### PROFIBUS OUT

PIN	NAME
1	V+
2	DATA-/A-LINE
3	V <sub>REF</sub>
4	DATA+/B-LINE
5	-

### DIGITAL I/O

PIN	NAME
1	OUT1 COM
2	INRET 123
3	+24V <sub>DC</sub>
4	OUT1 NC
5	IN1
6	IN2
7	IN3
8	GND (+24 V <sub>DC</sub> )

## CONNECTION

### MOTOR OUTPUT

PIN	NAME
1	-
2	U
3	V
4	W
5	-
6	PE

### FEEDBACK

PIN	NAME
1	U/A
2	V/B
3	W/Z
4	5V <sub>DC</sub>
5	GND

### PROXY DUAL LOOP

PIN	NAME
1	+24V <sub>DC</sub> PROXY
2	INRET 123 PROXY
3	GND (+24V <sub>DC</sub> )
4	OUT2 NO
5	OUT2 NO
6	IN7 PROXY
7	+24 V <sub>DC</sub>
8	OUT2 COM

The LITE PRO series is represented by the extremely compact 4-quadrants drives perfect matched to control motoroller 60. This series features as standard CanOpen interface and a complete programmable version with integral Motion Process Unit, that allows stand alone and network architecture operation.

## FEATURES

- > **STANDARD FEEDBACK TTL ENCODER AND HALL SENSOR**
- > **DIGITAL I/O: UP TO 8 DIGITAL INPUTS AND 1 OR 2 DIGITAL OUTPUTS CUSTOMIZABLE WITH SEVERAL BUILT-IN FUNCTIONS**
- > **CONTROL: STANDARD PI CONTROL LOOP**
- > **SERVO MODES: TORQUE, VELOCITY AND POSITION WITH S-CURVE PROFILE**
- > **INTERNAL SCRIPT**
- > **EXTREME COMPACT DESIGN**
- > **USB PROGRAMMING KEY**

## INTERFACE

- > **ANALOG VELOCITY AND TORQUE COMMAND  $\pm 10V$**
- > **CANopen**



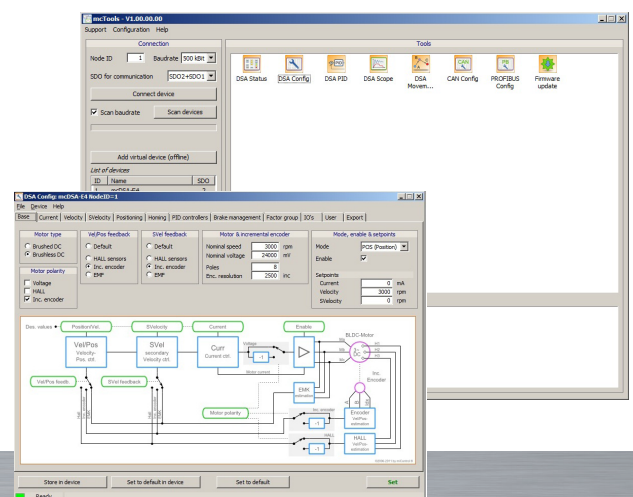
# COMPACT AND PROFITABLE

## PRODUCT DATA

FEATURE	UNITS	LPRO E40
Input voltage	VDC	48
Efficiency at rated power	%	>95
Auxiliary supply voltage	VDC	9 ... 30
Continuous current	Arms	8
Peak current	Arms	24
Ambient operating temperature	°C	0 to + 40°
Maximum humidity	%	5÷85% not condensing
Mounting method		Wall mounting DIN Rail
Dimensions	LxWxH mm	110x22,5x77
Weight	gr	110
Digital IN		4
Digital OUT		1

## LITE PRO USER INTERFACE

- > EASY AND INTUITIVE PC SOFTWARE ALLOWS A FAST PARAMETERIZATION OF THE LITE PRO
- > SIMPLE SCOPE
- > SCRIPT EDITING





**MOTORS**

**MOTION CONTROL**

**MECHATRONICS**



**Motor Power Company s.r.l.**

Via Leonardo Da Vinci, 4  
42024 Castelnovo Sotto  
Reggio Emilia - Italia  
Tel. 0039 0522 682710  
Fax 0039 0522 683552  
info@motorpowerco.it

**Motor Power Company GmbH**

Dillberg, 11  
97828 Marktheidenfeld  
Germany  
Tel 0049 9391 9198905  
Fax 0049 9391 9198907  
info@motorpowerco.de

**Motor Power Company Asia Ltd.**

Workshop 7, Shiny Science Park No.  
111, Dong Ting North Rd.  
215400 Taicang, Jiangsu Province  
P.R.China  
Tel: + 86-512-33337978  
Fax: +86-512-53207871  
infoasia@motorpowerco.com