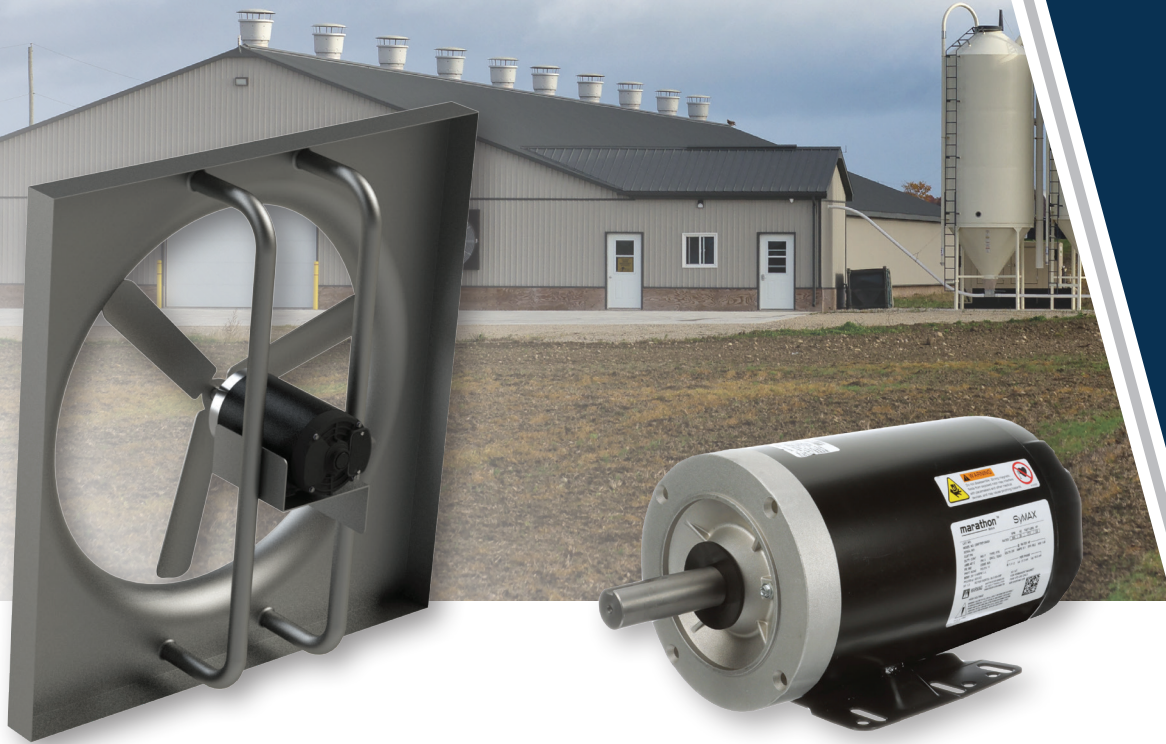


What **if**...

marathon[®]
Motors

your fan application no longer required the expense and maintenance of a belt and sheave?



SYMAX[®] 56 FRAME MOTOR

ELECTRONICALLY COMMUTATED (EC) MOTOR

The SyMAX motor offering now includes a new low speed range to support a variety of direct drive fan applications with impellers ranging in size from 24" to 60." This 56 frame motor provides up to IE5 efficiency and has the flexibility of variable speed when paired with a drive.

REGAL[®]

SYMAX® 56 FRAME MOTOR

	HP	RPM	VOLTS	NEMA®* FRAME	MODEL NUMBER	NOMINAL EFFICIENCY
NEW	1/2	1400	230	56C	056PTRE10645A	88.5
	1/2	1800	230/460	56C	056PNRA10100	82.2
NEW	3/4	900	230	56C	056PTRE10644A	91.7
	1	1800	230/460	56C	056PNRA10101	87.5
	1 1/2	1800	230/460	56C	056PNRA10102	87.5
NEW	2	600	230	56C	056PTRE10640A	90.2
	2	1200	230/460	56C	056PFRA10161	89.5

POTENTIAL FAN APPLICATIONS



- Agriculture
- Parking Garage
- Greenhouse
- Drying Barn
- Other high volume ventilation needs

marathon®
Motors

Regal Beloit America, Inc.
531 N. Fourth St.
Tipp City, Ohio 45371
Phone: 715-675-3311

www.regalbeloit.com

APPLICATION CONSIDERATIONS

The proper selection and application of products and components, including the related area of product safety, is the responsibility of the customer. Operating and performance requirements and potential associated issues will vary appreciably depending upon the use and application of such products and components. The scope of the technical and application information included in this publication is necessarily limited. Unusual operating environments and conditions, lubrication requirements, loading supports, and other factors can materially affect the application and operating results of the products and components and the customer should carefully review its requirements. Any technical advice or review furnished by Regal Beloit America, Inc. and/or its affiliates ("Regal") with respect to the use of products and components is given in good faith and without charge, and Regal assumes no obligation or liability for the advice given, or results obtained, all such advice and review being given and accepted at customer's risk.

For a copy of our Standard Terms and Conditions of Sale, please visit <https://www.regalbeloit.com/Terms-and-Conditions-of-Sale>. These terms and conditions of sale, disclaimers and limitations of liability apply to any person who may buy, acquire or use a Regal product referred to herein, including any person who buys from a licensed distributor of these branded products.

*NEMA is a trademark of National Electrical Manufacturers Association and is not owned or controlled by Regal Beloit Corporation.

Regal, Marathon and SyMAX are trademarks of Regal Beloit Corporation or one of its affiliated companies.

©2019 Regal Beloit Corporation, All Rights Reserved. MCSSP19058E • Form# SB0233E

REGAL®