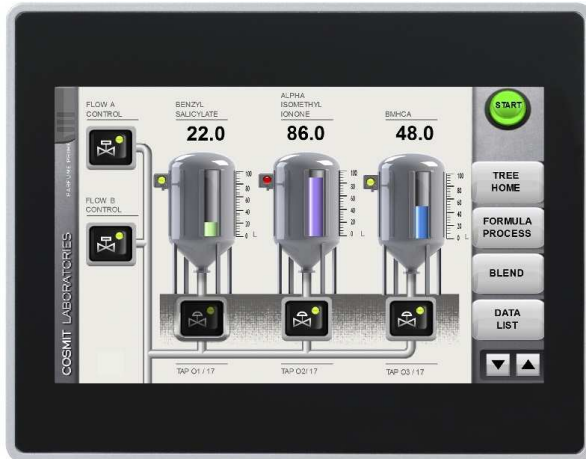


# UniOP eTOP507

The UniOP eTOP Series 500 HMI products combine state-of-the-art features and top performance with an outstanding design. They are the ideal choice for all demanding HMI applications including factory and building automation.

The eTOP507 features a bright 7" TFT widescreen (16:9) display with a fully dimmable LED backlight. The JMobile software offers full vector graphic capabilities and plenty of connectivity options.



- 7" TFT color display, LED backlight
- 800x480 pixel (WVGA) resolution, 64K colors
- Resistive touchscreen
- 2 Ethernet ports with switch function
- 2 USB Host ports
- SD Card Slot
- Connection to fieldbus systems and I/O using optional plug-in modules
- Slim design. Mounting depth less than 50mm

## Highlights

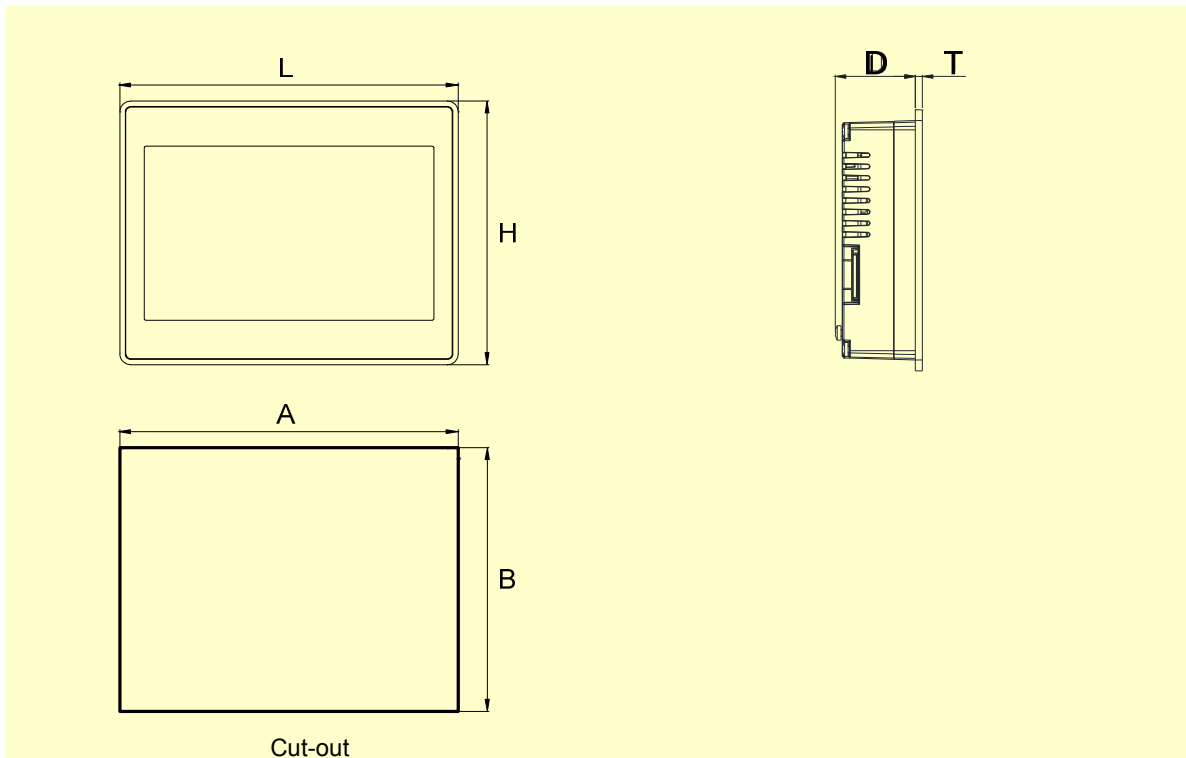
The eTOP Series 500 HMI panels have been designed to run the JMobile software.

- JMobile runtime included. Full compatibility with JMobile Studio.
- Full vector graphic support. Native support of SVG graphic objects. Transparency and alpha blending.
- Full object dynamics: control visibility and transparency, move, resize, rotate any object on screen. Change properties of basic and complex objects.
- TrueType fonts
- Multilanguage applications. Easily create and manage your applications in multiple languages to meet global requirements. Far East languages are supported. Tools available in JMobile Studio support easy third-party translations and help reducing development and maintenance costs of the application
- Data display in numerical, text, bargraph, analog gauges and graphic image formats.
- Rich set of state-of-the-art HMI features: data acquisition, alarm handling, scheduler and timed actions (daily and weekly schedulers, exception dates), recipes, users and passwords, e-mail and RSS feeds, rotating menus
- Includes support for a wide range of communication drivers for Factory and Building Automation systems.
- Multiple drivers communication capability.
- Remote monitoring and control. Client-Server functionality. Mobile clients supported.
- Remote maintenance and support with VNC-based functionality.
- Off-line simulation of the HMI application with JMobile Studio.
- Powerful scripting language for automating HMI applications. Script debugging improves efficiency in application development.
- Rich gallery of symbols and objects
- Project templates
- Optional plug-in modules for fieldbus systems, I/O and controllers.
- Display backlight dimmable to 0%

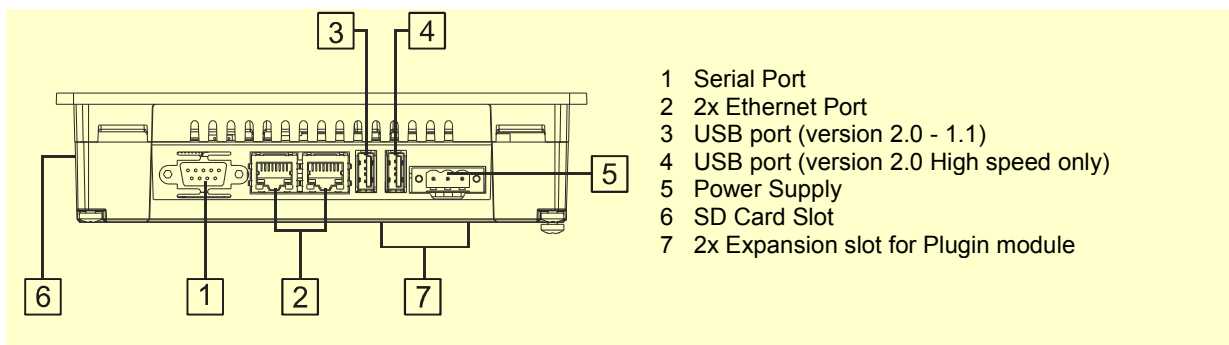
## Technical Data

<b>Display</b>		<b>Buzzer</b>	Yes, audible feedback for touchscreen
Type	TFT	<b>Ratings</b>	
Resolution	800x480, WVGA	Power supply voltage	24 Vdc (10 to 32 Vdc)
Active display area	7" diagonal	Current consumption	0.65A at 24Vdc(max.)
Colors	64K	Fuse	Automatic
Backlight	LED	Weight	Approx 1.0 Kg
Brightness	300 Cd/m <sup>2</sup> typ.	Battery	Rechargeable Lithium battery, not user-replaceable
Dimming	Yes	<b>Environmental Conditions</b>	
<b>System Resources</b>		Operating temperature	0 to 50 °C (vertical installation)
Operating System	Microsoft Windows CE 6.0	Storage temperature	-20 to +70 °C
User memory	128 MB Flash	Operating and storage humidity	5 – 85 % relative humidity, non-condensing
RAM	256MB DDR	Protection class	IP66 (front) IP20 (rear)
<b>Operator Interface</b>		<b>Dimensions</b>	
Touchscreen	Analog resistive	Faceplate LxH	187x147 mm (7.36x5.79")
LED indicators	1 (dual color)	Cutout AxB	176x136 mm (6.93x5.35")
<b>Interface</b>		Depth D+T	47+4 mm (1.85+0.16")
Ethernet	2 10/100 Mbit with integrated Switch	<b>Approvals</b>	
USB	2 Host Interface (1 version 2.0, 1 version 2.0 and 1.1)	CE	Emission EN 61000-6-4 Immunity EN 61000-6-2 for installation in industrial environments
Serial	RS-232, RS-485, RS-422, software configurable	DNV	DNV Type Approval Certificate
Expansion Slot	2 Optional plug-in	UL	UL508 Listed Haz. Loc. Class I, Division 2, Groups A,B,C and D.
Memory Card	SD Card Slot	C-Tick	C-Tick mark
<b>Functionality</b>		GL	Germanischer Lloyd Type Approval Certificate
Vector graphics	Yes, includes SVG support		
Object dynamics	Yes. Visibility, opacity, position, size, rotation for most object types.		
TrueType fonts	Yes		
Multiple driver communication	Yes		
Data acquisition and trend presentation	Yes. Flash memory storage limited only by available memory		
Multilanguage	Yes, with runtime language switching.		
Recipes	Yes. Flash memory storage limited only by available memory		
Alarms	Yes		
Historical event list	Yes		
Users and passwords	Yes		
Hardware Real Time Clock	Yes, with battery back-up		
Screen saver	Yes		

**Dimensions**



**Connections**



- 1 Serial Port
- 2 2x Ethernet Port
- 3 USB port (version 2.0 - 1.1)
- 4 USB port (version 2.0 High speed only)
- 5 Power Supply
- 6 SD Card Slot
- 7 2x Expansion slot for Plugin module

**Ordering Information**

<b>Model</b>	<b>Part Number</b>	<b>Description</b>
eTOP507-White	+ETOP507U1P1	7" widescreen TFT color touchscreen with Ethernet and USB interfaces. White front panel. JMobile run-time.
eTOP507-Grey	+ETOP507U2P1	7" widescreen TFT color touchscreen with Ethernet and USB interfaces. Grey front panel. JMobile run-time.
eTOP507-Black	+ETOP507U3P1	7" widescreen TFT color touchscreen with Ethernet and USB interfaces. Black front panel. JMobile run-time.
PROTFOIL-07-GL	R-PROT12	Disposable protection foil for 5.7" and 7" eTOP touch panels (10 pieces).
PROTFOIL-07-UV	R-PROT18	Disposable protection foil for 5.7" and 7" eTOP touch panels (10 pieces). UV resistant.

---

**ptn0347**

**Ver. 1.7**

**Copyright © 2011-2013 Exor International S.p.A. – Verona, Italy**

Subject to change without notice

The information contained in this document is provided for informational purposes only. While efforts were made to verify the accuracy of the information contained in this documentation, it is provided "as is" without warranty of any kind.

[www.uniop.com](http://www.uniop.com)