



Made in USA  October 17, 2017

[Products](#) [Support](#) [Explore](#) [Downloads](#) [Main](#) [Product Applications](#)

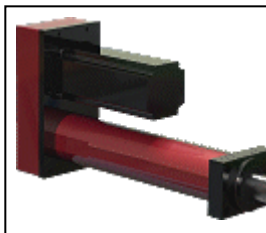
PRODUCTS



Eliminator ST (stainless steel)

2,000 -25,000 lbs Force
 Heavy Wall Stainless Steel Construction
 Designed for Wash Down
 Contoured to Eliminate Pooling and Contaminates
 Simultaneous High Thrust with High Speed
 Piston with Rugged Anti-Rotation Feature
 Adjustable Limit Switch Positions

[LEARN MORE](#)



E-Tac ET

Force From 200 to 300 lbs
 Velocity to 33 in/sec
 Sealed Chamber Design with Purge Provisions
 Adjustable Limit Switch Positions
 Accepts Any Motor up to 3" Square
 Piston with Rugged Anti Rotation Feature
 Rugged, Heavy Wall Construction

[LEARN MORE](#)



VecTac VT

Force From 400 to 2,000 lbs
 Strokes to 30 inches maximum
 Velocity to 40 in/sec
 Sealed Chamber Design with Purge Provisions
 Adjustable Limit Switch Positions
 Accepts Any Motor

Piston with Rugged Anti Rotation Feature
Rugged, Heavy Wall Construction

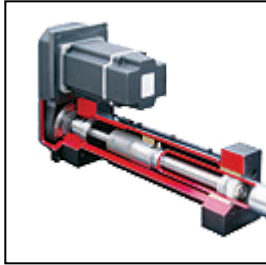
[LEARN
MORE](#)



L-Tac LS

Force From 400 to 2,000 lbs
Strokes to 48 inches maximum
Velocity to 40 in/sec
Sealed Chamber Design with Purge Provisions
Adjustable Limit Switch Positions
Accepts Any Motor
Piston with Rugged Anti Rotation Feature
Rugged, Heavy Wall Construction

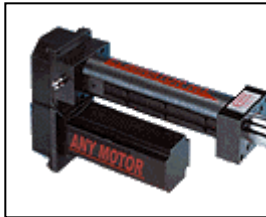
[LEARN
MORE](#)



Eliminator HD

2,000-25,000 lbs Force
Heavy Wall Steel Construction
Longest Life
Simultaneous High Thrust with High Speed
Piston with Rugged Anti Rotation Feature
Adjustable Limit Switch Positions
Sealed Chamber Design with Purge Provisions

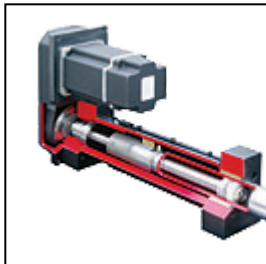
[LEARN
MORE](#)



Eliminator HDL with Integral Load Cell Option

Integrated force measurement
2,000-25,000 lbs Force
Accurate within 1/2 percent of rated force
Conforms to latest standard ASTM E4 for Testing Machines
Internal load cell 1/2 wire connections are "out of the way"
Load cell rated for 100 million cycles
mV/V Output Signal
10 1/2 cable with IP67 cord grip fitting

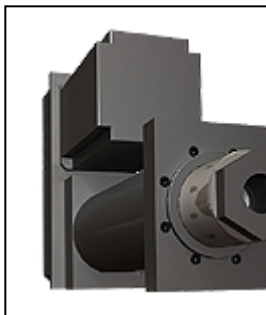
[LEARN
MORE](#)



Eliminator HDR with Roller Screw Option

4,000-25,000 lbs Force
Heavy Wall Steel Construction
Longest Life
Simultaneous High Thrust with High Speed
Piston with Rugged Anti Rotation Feature
Sealed Chamber Design with Purge Provisions

[LEARN
MORE](#)



Eliminator SD

30,000-66,000 lbs Force
Heavy Wall Steel Construction
Highest (B10) Life Rating
Piston with Rugged Anti Rotation Feature
Adjustable Limit Switch Positions
Sealed Chamber Design with Purge Provisions
Roller Screw also available

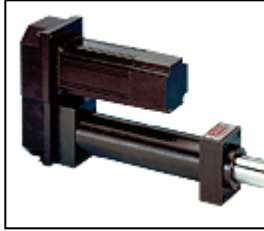
[LEARN
MORE](#)



Eliminator SS

Velocity to 65 in/sec
 Rated Thrust 2,000 lbs Force
 Heavy Wall Steel Construction
 Highest (B10) Life Rating
 Piston with Rugged Anti-Rotation
 Adjustable Limit Switch Positions
 Sealed Chamber Design

[LEARN MORE](#)



MT Precision

Machine Tool Grade
 High Precision with Force to 15,000 lbs
 Rugged Steel Construction
 Designed for High System Stiffness
 Flexible Design to Suit Any Motor
 Sealed Chamber Design with Purge Provisions

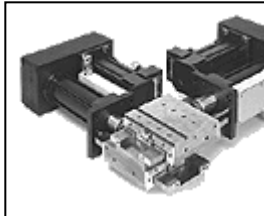
[LEARN MORE](#)



EA Series

Part of our Legacy Product Line
 Modified or Custom Built
 High Precision with Force to 15,000 lbs
 Rugged Steel Construction
 Designed for High System Stiffness
 Flexible Design to Suit Any Motor
 Sealed Chamber Design with Purge Provisions

[LEARN MORE](#)



Slides

Part of our Legacy Product Line
 Single & Multi-Axes
 Rugged Ductile Iron Slide
 Hardened and Ground Steel Ways
 Utilizes a Full Length Gib
 Designed to Accept EA Series Precision Linear Actuators

[LEARN MORE](#)



Limit Switches

Part of our Legacy Product Line
 Linear & Rotary
 Hermetically Sealed to IP67 Standards
 Rugged Cast Aluminum Magnesium Alloy Gasketed Assembly
 Compact and Self Contained

[LEARN MORE](#)



Electric Cylinders and Actuators

Motorized option for lower travel speeds
 Velocities from 2-540 in/min
 Designed to move 100 to 40,000 pounds
 Rugged translating cylinder
 Broad selection

[LEARN MORE](#)

[Glossary](#) | [FAQ's](#) | [Service Guide](#)

Take a look at the glossary of terms and understand what to look for when choosing the actuator for your application. Also take a look at our Frequently Asked Questions (FAQ's) page to answer a common question. Finally, if you need a Service Guide for your product, you can find it on our Service page.

[Home](#) | [Products](#) | [Distributors](#) | [Downloads](#) | [FAQ's](#) | [Site Map](#) | [Contact Us](#) | [About Us](#) | [Top](#)



© 2000-2013 E•DRIVE Actuators, Inc. All Rights Reserved | Webmaster