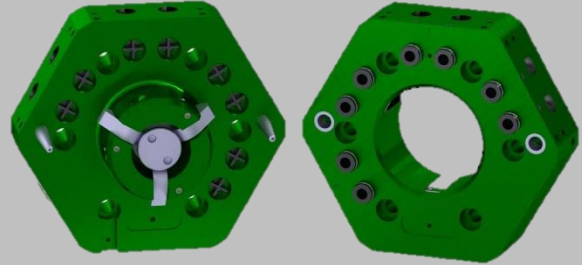


EPSILON XCHANGE™ Tool Changer ER100/ET100

ER100/ET100 is an automatic tool changing assembly for exchanging robotic end-of-arm tooling (EOAT) on the fly.

Advantages:

- High Strength Aluminum Alloy Body
- Cam Locking Mechanism with **Lifetime Guarantee**
 - Self-Centering
 - Wear Compensating
 - Self-Cleaning
 - Positive Cam Retraction
 - Mechanical Locking (Loss of Air)
- Flexible Utility Options
- Couple/Uncouple Sensing



SPECIFICATIONS

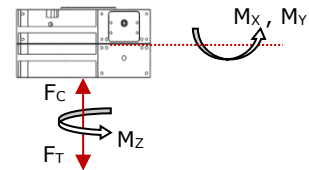
| Model | Rated Payload | Operating Moment (M _x , M _y) | E-Stop Moment (M _x , M _y) | Operating Torque (M _z) | E-Stop Torque (M _z) | Tensile Force (F _r) | Compressive Force (F _c) | Rotational Repeatability | User Pneumatic Flow (at 60 psi) | User Pneumatic Pressure Range | Couple/Uncouple Sensing Voltage |
|---------------------|---------------|---|--|------------------------------------|---------------------------------|---------------------------------|-------------------------------------|--------------------------|----------------------------------|-------------------------------|---------------------------------|
| | kg (lb) | Nm (in-lb) | Nm (in-lb) | Nm (in-lb) | Nm (in-lb) | N (lb) | N (lb) | deg. | NLPM (SCFM) | bar (psi) | VDC |
| E31.5 | 10 (22) | 52 (465) | 79 (700) | 30 (265) | 60 (520) | 934 (210) | 4,159 (935) | ± .04 | 179 (6.9) | 0 - 7 (0 - 101) | 10 - 30 |
| E50 | 25 (55) | 88 (780) | 168 (1,485) | 120 (1,060) | 375 (3,320) | 3,336 (750) | 17,837 (4,010) | ± .02 | 285 (11) | 0 - 7 (0 - 101) | 10 - 30 |
| E63 | 50 (110) | 112 (990) | 168 (1,485) | 220 (1,945) | 375 (3,320) | 3,336 (750) | 17,837 (4,010) | ± .02 | 285 (11) | 0 - 7 (0 - 101) | 10 - 30 |
| E80 | 90 (198) | 465 (4,120) | 890 (7,880) | 640 (5,665) | 1,585 (14,025) | 13,345 (3,000) | 31,649 (7,115) | ± .01 | 376 (14.5) | 0 - 7 (0 - 101) | 10 - 30 |
| E100 | 120 (264) | 548 (4,850) | 890 (7,880) | 960 (8,495) | 1,585 (14,025) | 13,345 (3,000) | 31,649 (7,115) | ± .01 | 376 (14.5) | 0 - 7 (0 - 101) | 10 - 30 |
| E125LP | 225 (495) | 1,737 (15,730) | 2,875 (25,459) | 2,020 (17,875) | 3,953 (34,985) | 15,750 (3,540) | 49,370 (11,100) | ± .01 | Contact Applications Engineering | 0 - 7 (0 - 101) | 10 - 30 |
| E125 | 350 (770) | 2,576 (22,800) | 4,817 (42,631) | 4,180 (36,995) | 5,110 (45,225) | 24,754 (5,565) | 127,998 (28,775) | ± .01 | N/A | N/A | 22 - 28 |
| E160 | 525 (1,155) | 3,775 (33,405) | 5,787 (51,220) | 4,800 (42,480) | 5,945 (52,615) | 37,120 (8,345) | 160,003 (35,970) | ± .01 | N/A | N/A | 22 - 28 |
| E160 (STL) * | 525 (1,155) | 4,300 (38,060) | 9,095 (80,490) | 4,800 (42,480) | 5,945 (52,615) | 37,120 (8,345) | 160,003 (35,970) | ± .01 | N/A | N/A | 22 - 28 |
| ES160 | 800 (1,760) | 5,649 (50,000) | 11,322 (100,215) | 5,280 (46,730) | 6,690 (59,210) | 49,486 (11,125) | 160,003 (35,970) | ± .01 | N/A | N/A | 22 - 28 |
| ES200 | 1,500 (3,300) | 15,097 (133,620) | 17,998 (159,300) | 11,660 (103,200) | 14,590 (129,130) | 96,393 (21,670) | 246,031 (55,310) | ± .01 | N/A | N/A | 22 - 28 |

* E160 (STL) utilizes a steel tool side and an aluminum robot side.

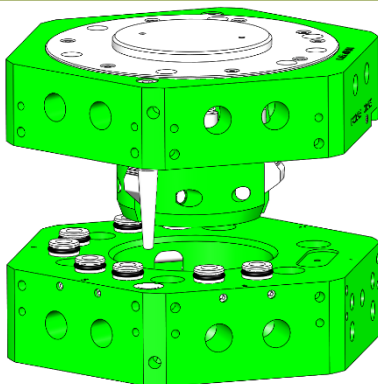
Operating Temperature: 5 - 60 °C (40 - 140 °F)

Noise Emissions: < = 70 dB(A) in any direction

Supply Pressure: 5 - 7 bar (72 - 101 psi)

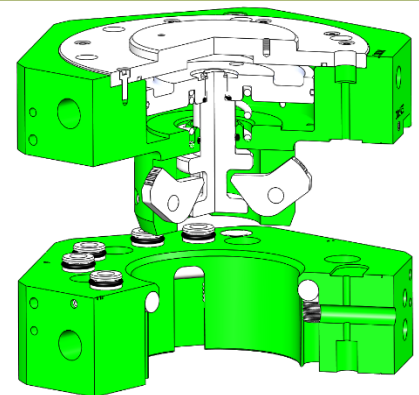


SECTIONAL DIAGRAM



Applied Robotics XCHANGE™ automatic tool changing technology allows for exchanging robotic end-of-arm tooling (EOAT) on the fly without shutting down production lines. Not only does this add efficiency to processes requiring frequent connection/disconnection of tooling and support utilities, but also reduces the probability of human errors introduced by manual connections.

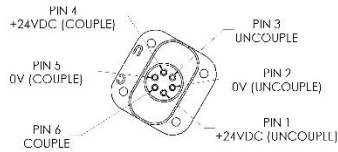
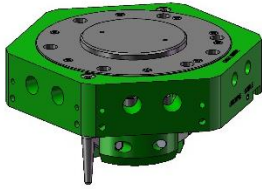
 **Applied Robotics™**
Solutions in reach



PRODUCT INFORMATION

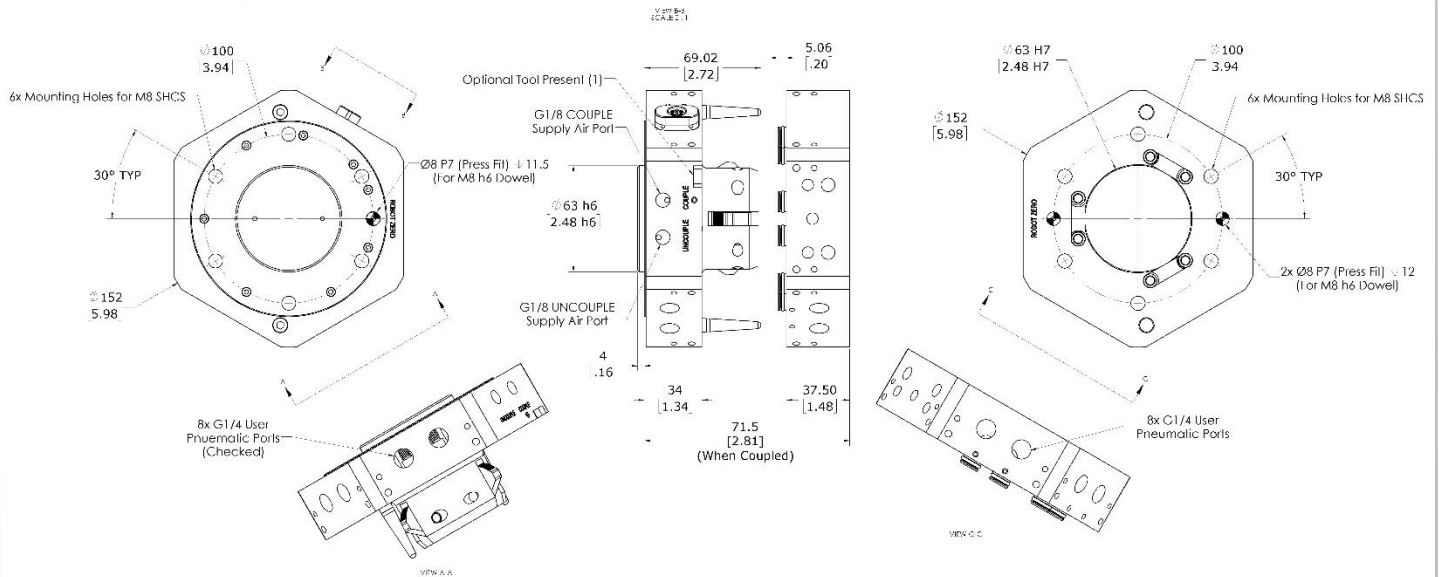
ROBOT ADAPTOR

ROBOT ADAPTOR WEIGHT: 1.46 kg [3.21 lbs]



TOOL ADAPTOR

TOOL ADAPTOR WEIGHT: 1.22 kg [2.68 lbs]



OPTIONAL UTILITIES

1. 8x G1/4 User Pneumatic Ports
(Checked on Robot Side)
2. Additional Pneumatic Passthru
3. Electrical Passthru (Signal, Communication, etc.)

